

SOLD

CONVENIENT CENTRAL GARDEN OASIS

Set amongst the beautifully maintained gardens of Argyle Square, this ground-floor apartment offers an appealing blend of privacy, convenience and relaxed living - ideal for downsizers and first home buyers.

Freshly repainted throughout, the interiors feel light and fresh, with the living area flowing seamlessly out to a generous courtyard - perfect for morning coffee, quiet evenings or pottering on the weekend. The renovated kitchen is well equipped with quality appliances and has been thoughtfully designed for everyday functionality.

Both bedrooms include built-in robes, while the main bedroom enjoys direct access to a charming, leafy porch - a peaceful retreat framed with established greenery.

Privately positioned with its own direct access from Currong Street, the apartment sits just moments from the City, the Canberra Centre, Braddon and the light rail. With excellent public transport access and a tranquil garden setting, this home delivers an convenient and picturesque inner-city lifestyle.

Summary of Features:

- 73.5sqm Living 2br + Study
- Freshly Painted Throughout
- Renovated Kitchen
- Renovated Bathroom w/ Underfloor Heating
- Split System Heating/Cooling
- Timber Look Floors
- Large Courtyard (62sqm)
- Single Garage (18.5sqm)

Key Figures:

Built: 1985
Living: 73.5sqm + Garage (approx)
Courtyard: 62sqm (approx)
Rates: \$704/qtr (approx)
Body Corp: \$840/qtr (approx)
Rental Estimate: \$580 - \$620pw

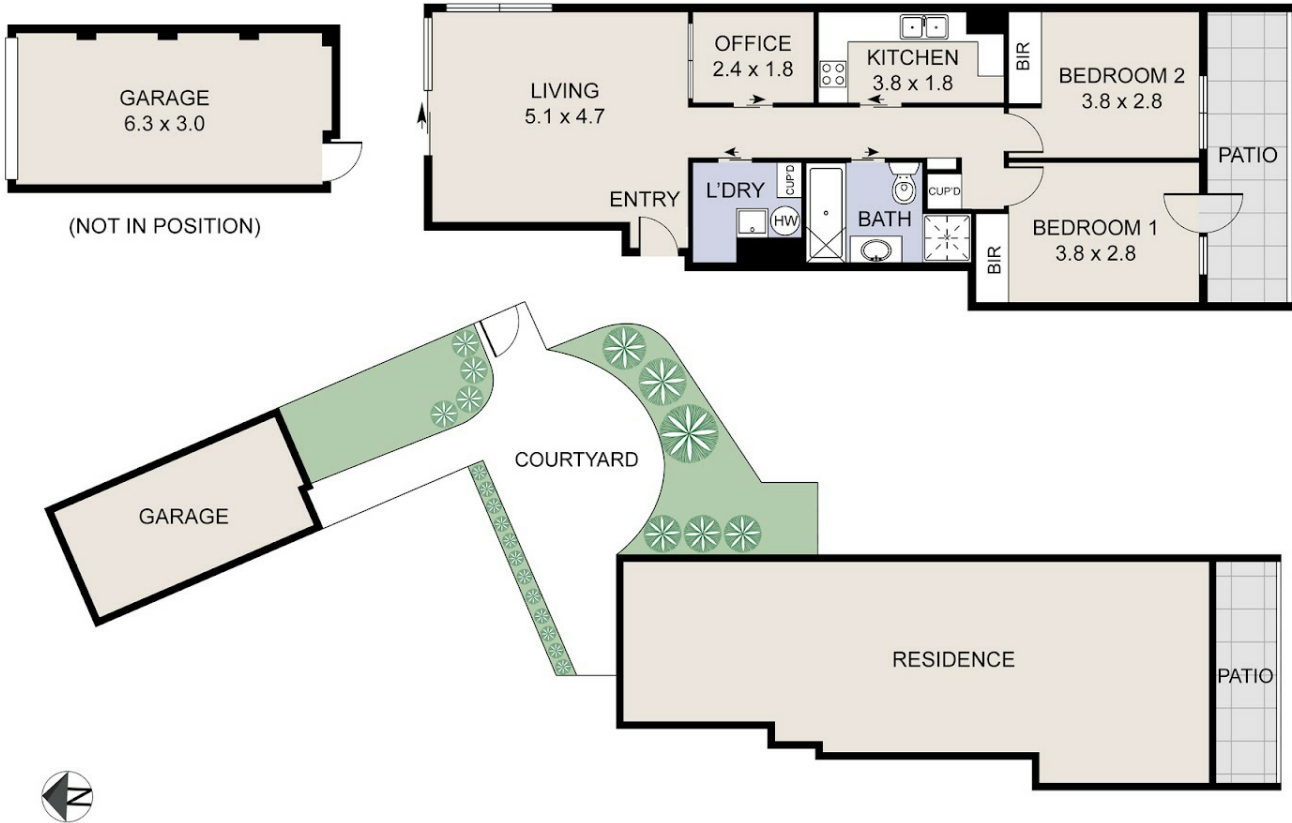
2 BED | 1 BATH | 1 CAR

PRICE:
\$665,000

OPEN FOR INSPECTION:
N/A



Catherine Halloran
0490045819
catherine@thepropertyagents.com.au
www.thepropertyagents.com.au



Disclaimer: Please note this floor plan is for marketing purposes and is to be used as a guide only. All dimensions are estimates only and may not be exact measurements.