



SOLD

OPEN CANCELLED 7/3/2026

Positioned in a quiet court in Warragul, this well-presented home offers modern comfort, neutral tones and an easy-care lifestyle — ideal for first home buyers, downsizers or those seeking a steady investment opportunity.

Inside, you're welcomed by a spacious open plan kitchen, dining and living area that forms the true heart of the home. The generous kitchen provides ample bench space and storage, flowing seamlessly into the light-filled living zone — perfect for both everyday living and entertaining. Soft, natural colour palettes create a fresh and modern feel, while carpeted areas add warmth and comfort throughout.

The master bedroom is privately positioned and complete with a walk-in robe and ensuite. Two additional bedrooms are well-sized and serviced by a central bathroom, offering flexibility for growing families, guests or a home office setup.

Step outside to a large rear deck — a fantastic space for entertaining friends and family or relaxing at the end of the day. The backyard is low maintenance, making it ideal for busy households who want lifestyle without the upkeep.

A standout feature is the impressive three-car garage, offering exceptional space for vehicles, storage, a workshop or recreational needs.

Conveniently located close to kindergarten, parks, schools, daycare, public transport and medical facilities, and just a short drive to the Warragul town centre, this home delivers practicality, comfort and long-term appeal in a family-friendly setting.

A smart opportunity in a well-connected location.

3 BED | 2 BATH | 6 CAR

PRICE:
\$600,000

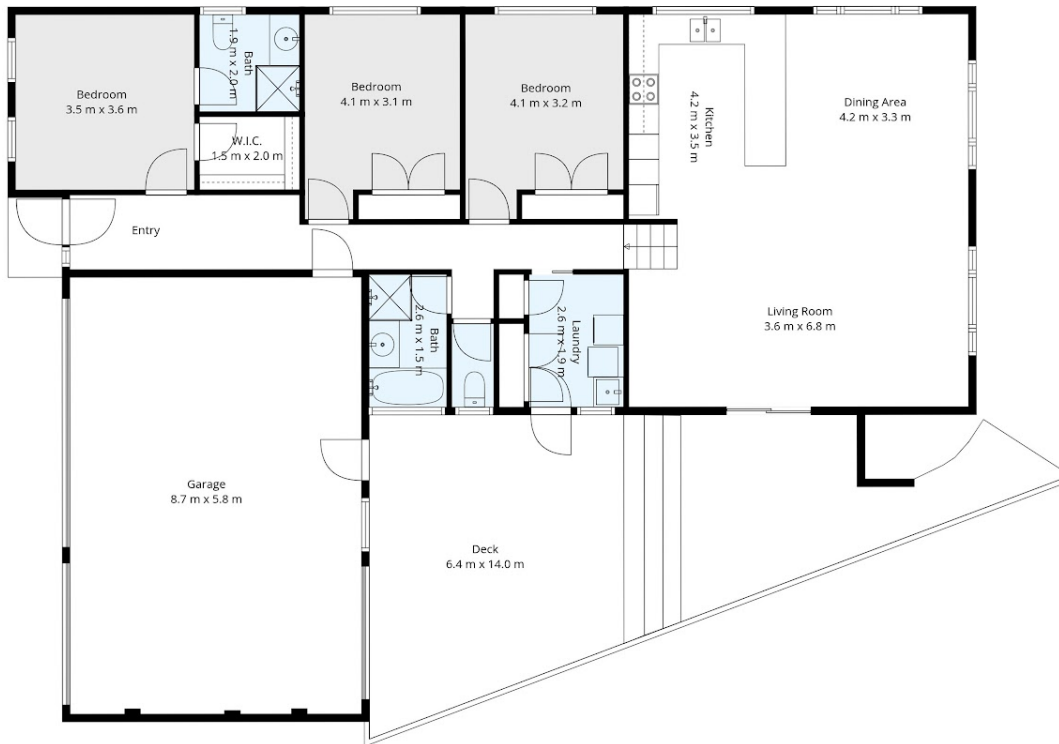
OPEN FOR INSPECTION:
N/A



Mel Ahearn
0409183763

mahearn@atrealty.com.au

atrealtypropertysalesgippsland.com.au



3 Tattersons Court, Warragul

Whilst every attempt has been made to ensure the accuracy of the floorplan contained here all measurements are approximate and are for illustration purposes only. No responsibility is taken for any error, omission or misstatement.



Disclaimer: Please note this floor plan is for marketing purposes and is to be used as a guide only. All dimensions are estimates only and may not be exact measurements.