



# FOR SALE

## WHERE A HOLIDAY DREAM BECOMES HOME!

There are moments when a place stays with you.

You arrive for a weekend, a holiday, a fleeting escape — and suddenly it's not just a destination anymore. It's the morning light off the water, the salt in the air, the ease of village life unfolding around you. Most people leave with memories. A few recognise something more.

This apartment was born from that exact feeling.

Set within La Residence De La Mer, this beautifully proportioned two-bedroom apartment captures the essence of coastal living without excess or effort. At approximately 75 sqm, the layout is calm, practical, and quietly refined — a home that feels equally right for everyday living or for returning to when the coast calls you back.

The main bedroom is a genuine retreat, complete with a walk-in wardrobe and a sense of separation that invites rest. A second bedroom provides flexibility — a place for guests who stay longer than planned, a peaceful work-from-home space, or simply room to adapt as life changes. Natural light and coastal tones flow throughout, creating a home that feels settled, welcoming, and easy from the moment you arrive.

And this is where the opportunity gently reveals itself.

A place to live fully — morning swims, long walks, coffee in the village, unhurried evenings — yet equally a home that can be locked up and left, ready for your next return. It asks little of you, but gives generously when you're here. A property that naturally resonates with those who understand Orewa not as a destination, but as a way of life.

This is not about chasing trends or ticking boxes.

It's about owning a foothold in a place you already love — and allowing this apartment to fit around your life, however that life unfolds.

Many dream of returning to the place they fell in love with. Very few find the right moment to make it theirs.

2 BED | 1 BATH | 0 CAR

PRICE:

Price by Negotiation

OPEN FOR INSPECTION:

Feb 7 at 2:00pm - 2:30pm

Feb 8 at 2:00pm - 2:30pm

Feb 15 at 2:00pm - 2:30pm

Feb 22 at 2:00pm - 2:30pm

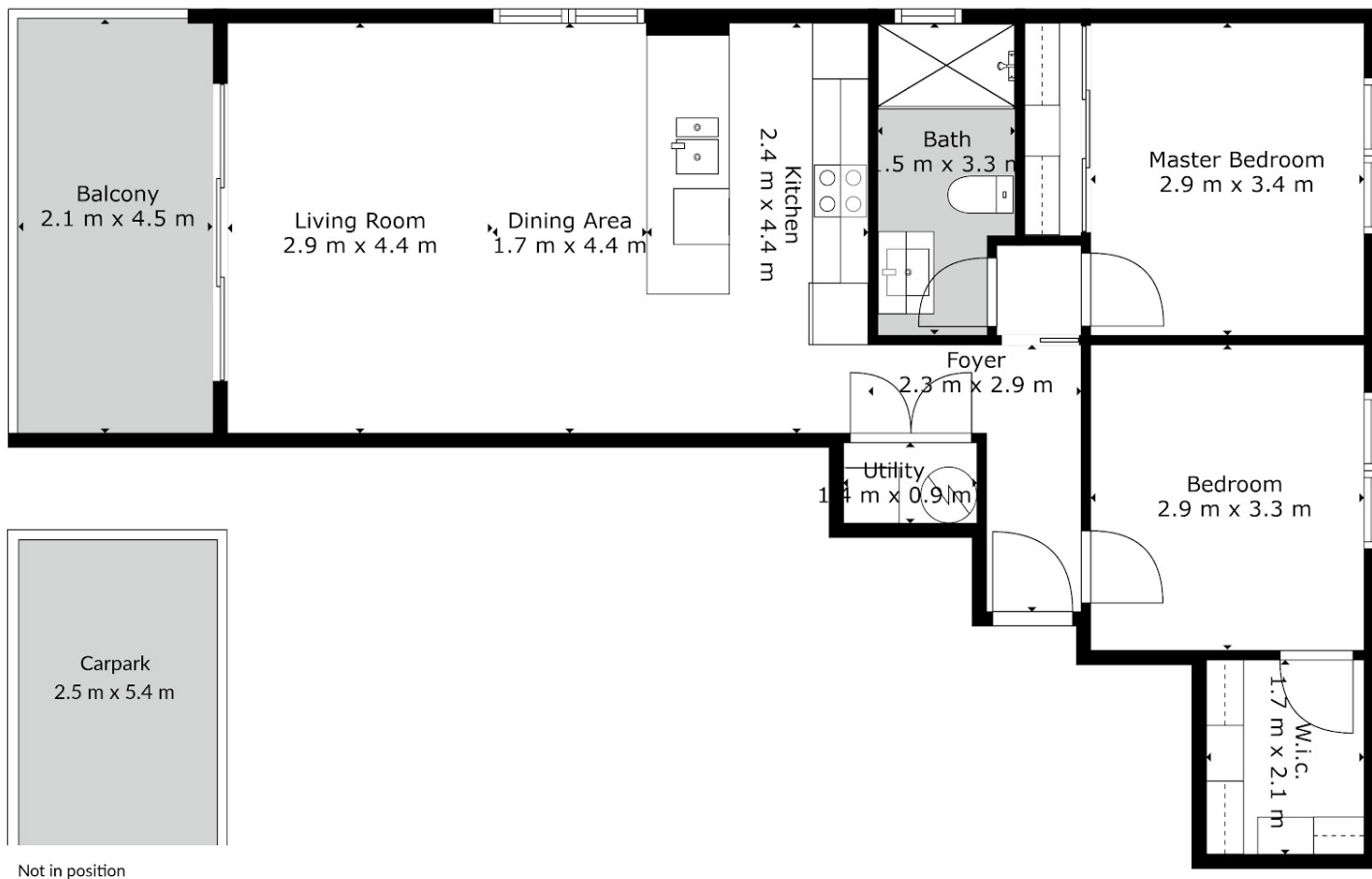


**Deb Maurer**

**0212788940**

deb.maurer@rrea.co.nz

www.rrea.co.nz



Sizes And Dimensions Are Approximate, Actual May Vary.

Disclaimer: Please note this floor plan is for marketing purposes and is to be used as a guide only. All dimensions are estimates only and may not be exact measurements.