



## FOR SALE

### SERENE LAKE-VIEW IN A SOUGHT AFTER OVER 50'S RESORT

Nestled in a prime over 50's resort at 71/368 Oxley Drive, this beautifully appointed 2-bedroom, 1-bathroom unit offers the perfect blend of comfort, convenience and tranquillity in Coombabah's sought-after lakeside location. With stunning north easterly lake aspect views designed for effortless living, this residence presents an exceptional opportunity for those seeking a peaceful yet well-connected lifestyle on the Gold Coast.

- Home features incl;
- \* Open plan kitchen, dining and lounge all with north easterly lake views
  - \* Reading nook ready for a cuppa + your favourite author
  - \* Generous bathroom and 2x seperate toilets
  - \* Split system air conditioning
  - \* Built-in wardrobes maximising storage space
  - \* Solar panels for environmentally conscious and cost-effective living
  - \* Secure parking with remote garage access and space for a workshop
  - \* Kayak enthusiasts invited (kayak incl)

- Resort Features incl;
- \* 2 pools (1 a solar heated magnesium pool)
  - \* Sauna
  - \* Tennis Court
  - \* Caravan / Motorhome onsite parking
  - \* Community Club House
  - \* Public transport at the front gate

Living here means embracing a lifestyle where morning walks along pristine waterways, afternoon bird watching sessions, and peaceful evenings overlooking the lake become part of your daily routine. The combination of modern retirement living amenities with access to one of Queensland's most significant natural areas creates a truly unique living experience. With so many recreational options and being so close to Runaway bay shopping centre, Gold Coast University Hospital, and everything the Gold Coast has to offer - Paradise Lake Resort is a very attractive option for anyone looking at downsizing.

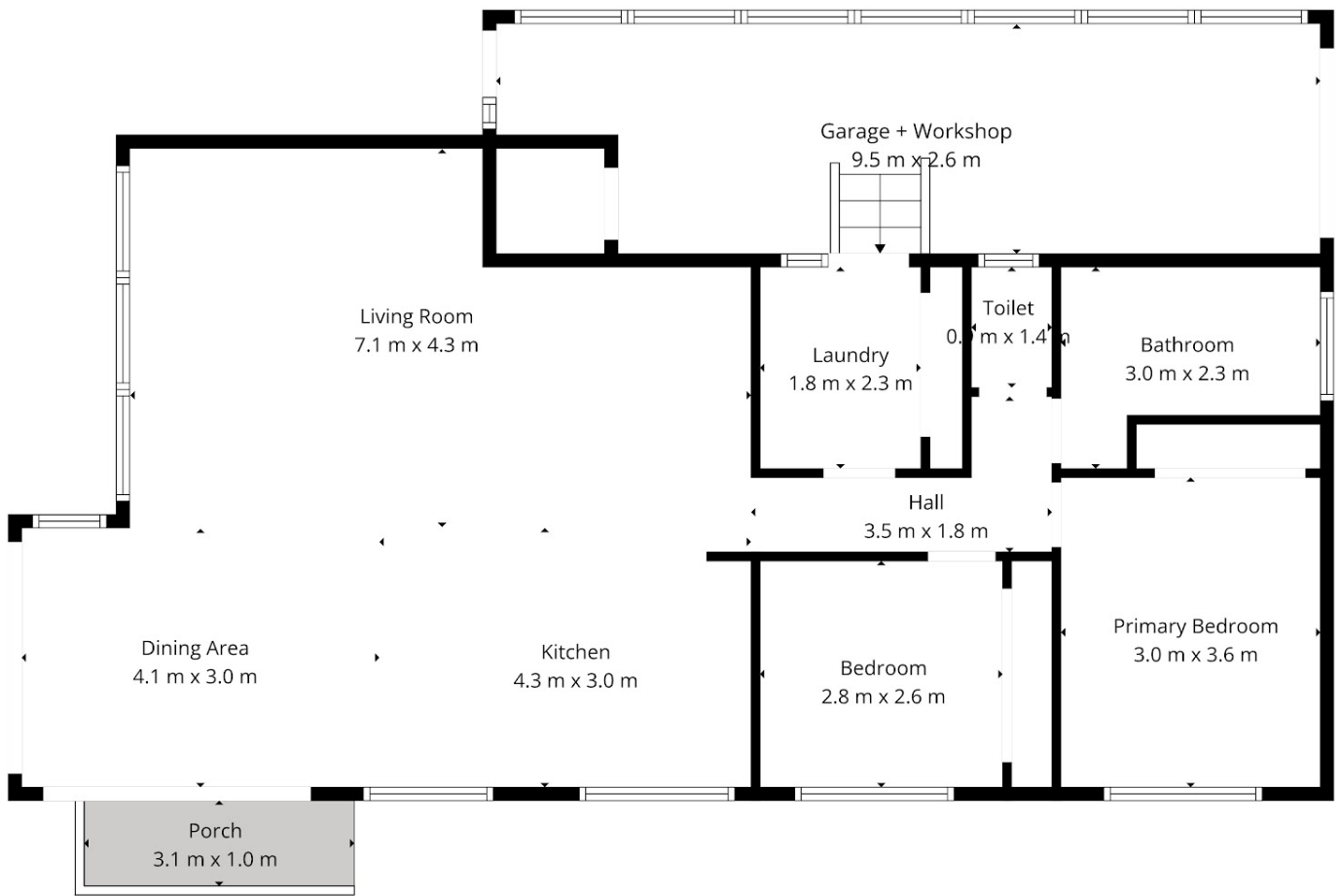
2 BED | 1 BATH | 1 CAR

PRICE:  
Price Guide \$699,000

OPEN FOR INSPECTION:  
N/A



**Trish Scott**  
**0427518650**  
trish.scott@atrealty.com.au  
[www.atrealty.com.au](http://www.atrealty.com.au)



**TOTAL: 93 m2**  
 1st floor: 93 m2  
 EXCLUDED AREAS: GARAGE + WORKSHOP: 23 m2, PORCH: 3 m2, WALLS: 9 m2

Floor Plan Created By Cubikasa App. Measurements Deemed Highly Reliable But Not Guaranteed.



Disclaimer: Please note this floor plan is for marketing purposes and is to be used as a guide only. All dimensions are estimates only and may not be exact measurements.

**Trish Scott**  
**0427518650**  
 trish.scott@atrealty.com.au  
[www.atrealty.com.au](http://www.atrealty.com.au)

