



SOLD

MODERN, LOW-MAINTENANCE LIVING IN A PRIME MOGGILL POCKET

This beautiful residence delivers a compelling combination of space, comfort, and future upside, positioned in one of Moggill's most tightly held locations. Only five years young and set on an approximately 649 m² allotment, the home presents as an ideal opportunity with scope to further enhance through landscaping and outdoor finishing.

Designed for practical family living, the floorplan offers four well-proportioned bedrooms, two bathrooms, and a double remote garage. Ducted heating and cooling throughout ensures year-round comfort, while the home's modern construction provides a clean, contemporary feel with minimal ongoing maintenance.

Seamless indoor-outdoor flow leads to a covered pergola, creating a dedicated space for entertaining in all seasons. The backyard remains a blank canvas which is ideal for buyers looking to add value and tailor the landscaping to their own vision, whether that's a garden, play area, or extended outdoor entertaining zone.

Key highlights:

- Four generous bedrooms
- Study
- Two modern bathrooms
- Double remote garage with internal access
- Approx. 649 m² allotment
- Ducted heating and cooling throughout
- Covered pergola for year-round entertaining
- Excellent Moggill location with strong owner-occupier appeal

Moggill continues to outperform on livability and long-term appeal, underpinned by a tightly held community, well-regarded local schools, reliable public transport and easy connectivity to shopping hubs and key arterial routes into the Brisbane CBD.

This is a modern, well-presented home in a highly sought-after location, with clear upside to add value and capitalise on future growth. Be quick as homes like this don't last long!

4 BED | 2 BATH | 2 CAR

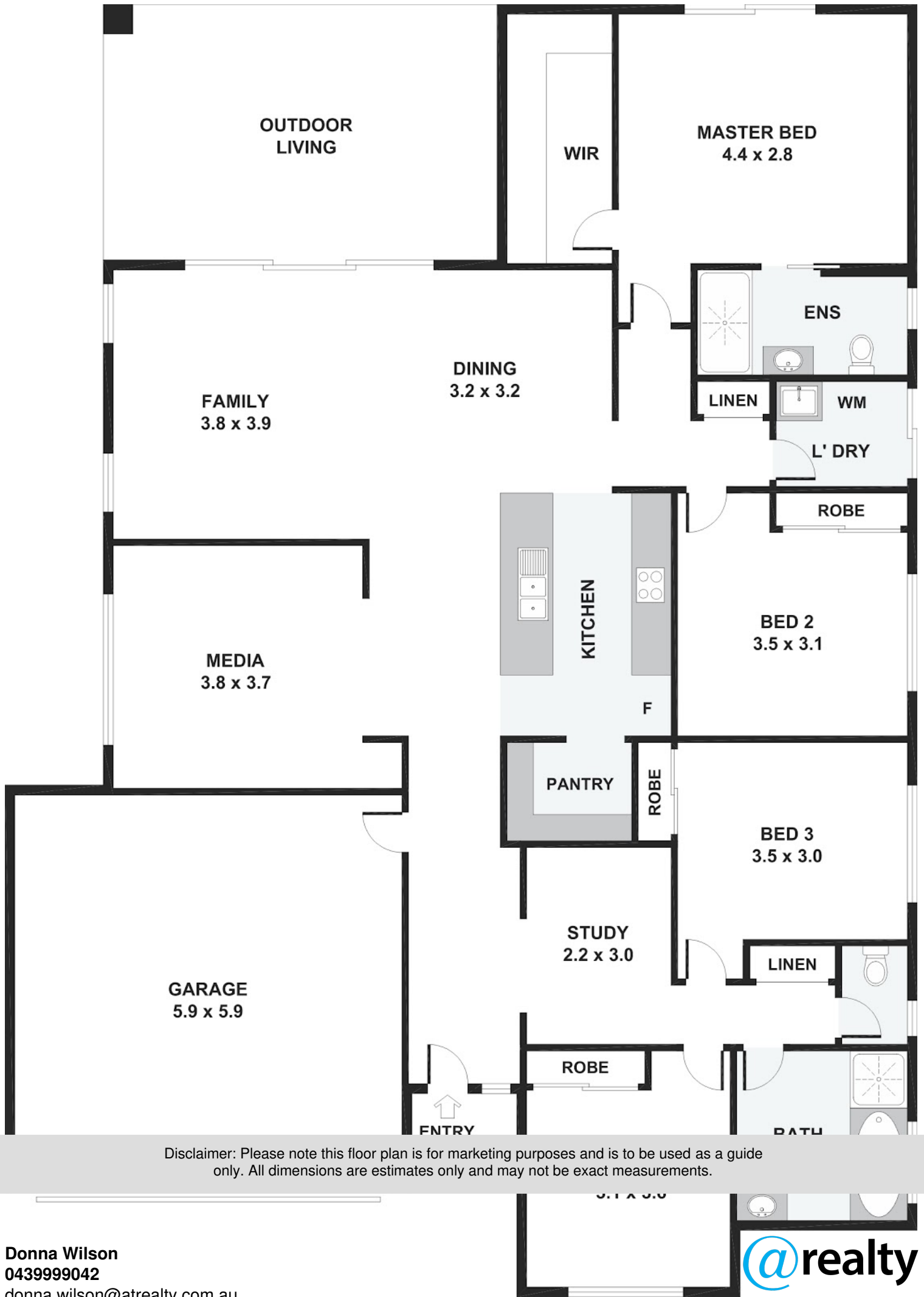
PRICE:
\$1,260,000

OPEN FOR INSPECTION:
N/A



Donna Wilson
0439999042

donna.wilson@atrealty.com.au
www.atrealty.com.au



Disclaimer: Please note this floor plan is for marketing purposes and is to be used as a guide only. All dimensions are estimates only and may not be exact measurements.