



FOR SALE

CULLEN BAY LUXURY LOCATION WITH INCREDIBLE SEA VIEWS

Located in the prestigious Crown Point Apartment building, this exceptional residence delivers a front row seat to some of the most captivating views in Darwin. From level 9 you will see golden sunsets with the gentle movement of yachts and cruise ships gliding through the harbour, the outlook is nothing short of mesmerising. Every day feels like a waterfront escape, enjoyed from your bedroom, living areas and balcony..

Designed for effortless indoor outdoor living, large sliding doors open wide to a generously sized balcony that is perfect for entertaining or simply relaxing with the sea breeze. A short stroll through lush tropical gardens leads you to the resort style pool precinct, home to an impressive 25 metre lap pool framed by palms, creating an inviting space for both exercise and leisurely afternoons by the water. This home is modern, welcoming, and ready for you to move in and enjoy from day one.

Property Highlights:

- Two good sized bedrooms
- Generous balcony ideal for relaxing and sunrise and sunset views
- Large, tall windows capturing harbour views and cooling breezes
- Spacious open plan living and dining area
- Large format floor tiles throughout
- Main bedroom with walk through mirrored robe and private ensuite
- Stylish kitchen with ample storage, dishwasher and electric cooktop
- Split system air conditioning throughout
- Excellent cross flow ventilation within the building central atrium design
- Modern new ceiling fans installed throughout
- Resort style 25 metre pool surrounded by tropical gardens
- Secure access to this exclusive complex
- Two basement car parks plus a separate storeroom
- Two lifts and audio visual security system
- Well managed body corporate with many long term owner occupiers
- Easy walk to the beach, casino, golf course, Mindil Beach Sunset Markets, and popular dining spots

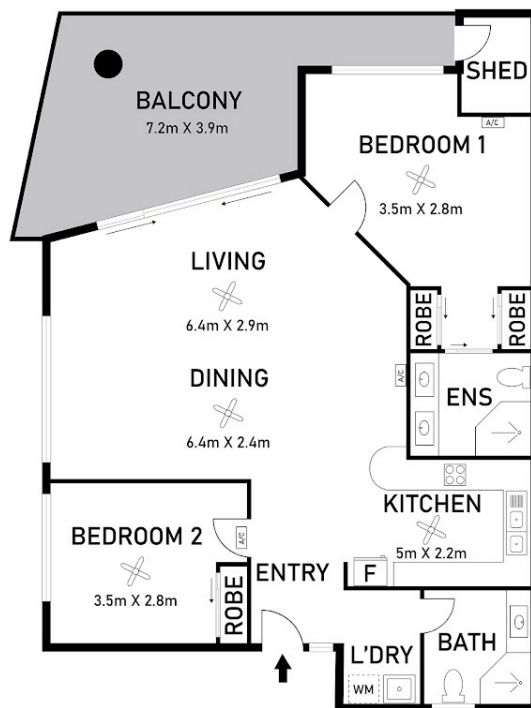
2 BED | 2 BATH | 2 CAR

PRICE:
\$649,000

OPEN FOR INSPECTION:
Apr 4 at 11:00am - 11:30am



Nicole Wheeler
0417508800
nicolewheeler@atrealty.com.au
www.atrealty.com.au



Scale in metres. Indicative only. Dimensions are approximately. All information contained here in is gathered from source we believe to be reliable. However we cannot guarantee its accuracy and interested persons should rely on their own enquiries

50/6 Marina Boulevard, Larrakeyah

Disclaimer: Please note this floor plan is for marketing purposes and is to be used as a guide only. All dimensions are estimates only and may not be exact measurements.