



**SOLD**

## PREMIUM ACREAGE LIVING CLOSE TO EVERYTHING

Welcome to 8 Sonaree Drive, Kingaroy.

Built by premium builder Daydream homes in 2023, this near-new, beautifully rendered home on more than an acre of land, delivers a rare blend of modern design, quality finishes, and breathtaking outlooks to the Bunya Mountains - all set in one of the best streets in the region.

When you step inside, the sense of space is undeniable. High ceilings, polished concrete floors, wide concertina sliding doors, and an open-plan layout create a light-filled interior that feels both practical and sophisticated. The owners have thoughtfully designed the home to take full advantage of the incredible views, with the lounge and outdoor areas perfectly positioned to soak in the scenery.

The heart of the home flows seamlessly between living, dining and kitchen spaces, complete with a dishwasher, fireplace for cosy winter nights, and a large air-conditioning system that comfortably services the main living zones. No expense has been spared, with tastefully colour schemes and quality finishing choices made throughout.

The master suite offers a spacious walk-in robe and private ensuite painted in microcement, with full size shower and bath, while the other three bedrooms are tucked away behind a corridor, along with the main bathroom and all have built in robes. A separate, oversized laundry adds further functionality, while Crimsafe screens and plantation blinds have been fitted to bedrooms.

The house also features a large double garage, three large rainwater tanks, plus town water, a regularly serviced septic system, and an impressive 12kW solar system to keep running costs low.

Space and privacy are sure to impress you at this property, with the powered 12m x 6m shed offering much more than meets the eye, with plenty of parking, plus its own bathroom with shower, laundry tub for cleaning up after work, fans, and an additional water tank.

A lovely open park sits conveniently across the road, while the home is just a short walk or bike ride to town, offering the best of both worlds: an acreage which is close to everything, yet not in

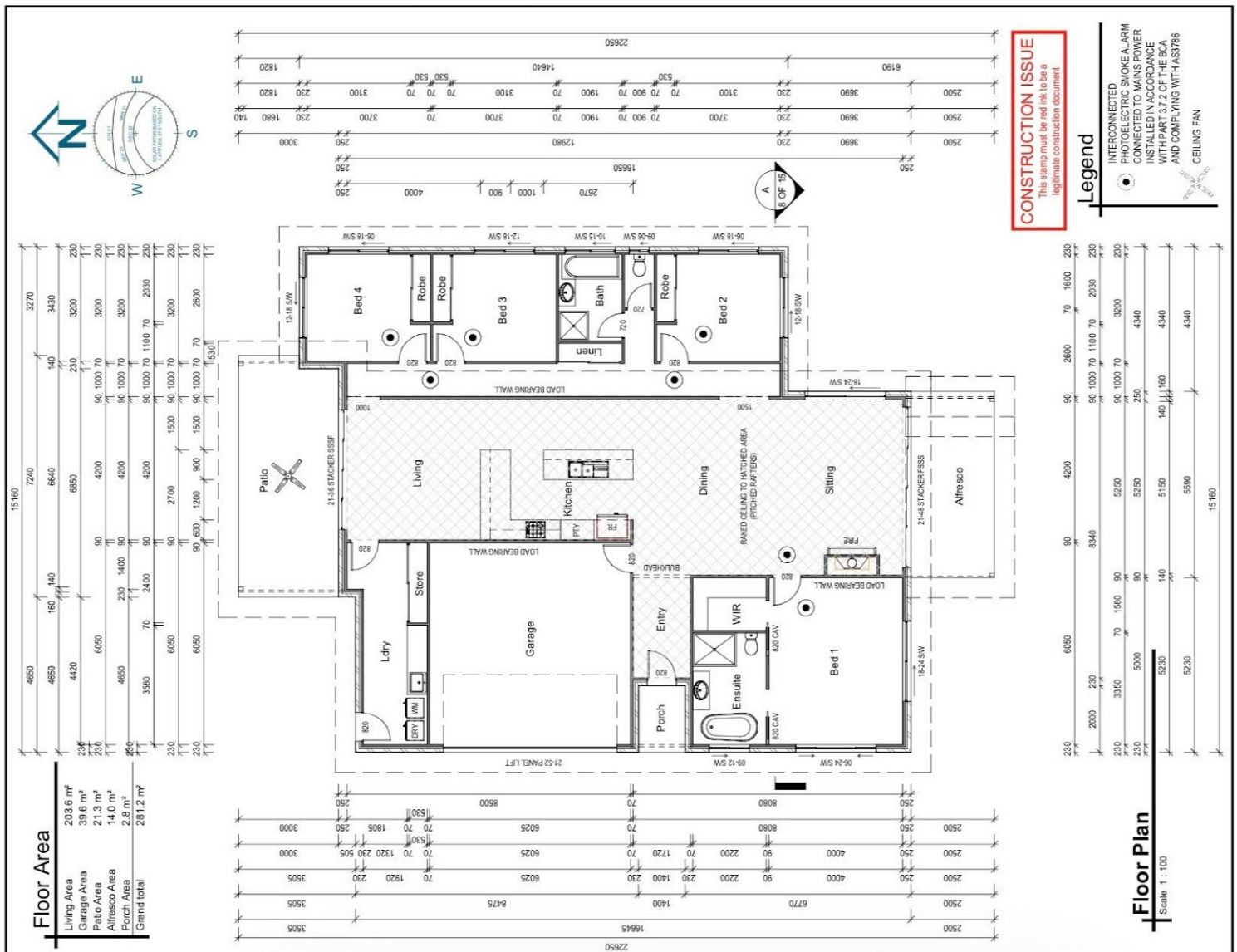
**4 BED | 3 BATH | 6 CAR**

**PRICE:**  
\$1,012,000

**OPEN FOR INSPECTION:**  
N/A



**Julian Gregson**  
**0421577537**  
julian.gregson@atrealty.com.au  
[www.juliangregson.com.au](http://www.juliangregson.com.au)



Disclaimer: Please note this floor plan is for marketing purposes and is to be used as a guide only. All dimensions are estimates only and may not be exact measurements.