



SOLD

DAY LIGHT ROBBERY BRING YOUR BALACLAVA

1950's kiwi bungalow with exceptional flow, north facing sun drenched waiting for the kiss of life. The home offer three bedrooms, separate lounge, separate dining, a large kitchen, one bathroom and seperate toilet. Homes like this are very special as its not an ordinary bungalow, loads of character and larger than most. Its livable now, plenty of opportunity to add value and make this home your master piece. **BONUS** : Internal access to a large concrete block basement with single garage and shed behind the garage, make what you want. Seriously for sale make no mistake this will be sold, Buy well below the CV \$890,000. Bargain hunters and serious buyers welcome. Ideal for first home buyers, renovators, tradie or just looking for a family home.

Handy to local shops (Sylvan Cres shops), buses, within minutes to motorway connections, Great School zones.

Motivated vendors say sell. something to get excited about.

See you at the open homes or make an appointment.

General info

Te Atatu South offers an exceptional lifestyle with its rich history dating back to the 1960s when it transformed from rural farmland to one of West Auckland's more affluent residential areas. The suburb is renowned for its quality family homes and strong community spirit, making it a highly sought-after location for discerning buyers.

Families will appreciate the excellent educational opportunities right on the doorstep:

- Rangeview Intermediate School for years 7-8 students
- Multiple contributing primary schools including Flanshaw Rd Primary, Tirimoana, Freyberg Community, and Edmonton Primary
- Rutherford College serving as the local state secondary school
- Arohanui School providing specialized education services

The location offers outstanding recreational facilities that cater to all ages and interests. Te Atatu South Park provides sports fields, walking tracks, and playground facilities, while the nearby Tui Glen Reserve features the renowned Tree Top playground. The suburb boasts extensive walkways including the Twin Streams Pathway and the developing Te Whau Pathway, perfect for cycling, walking, and connecting with nature.

3 BED | 1 BATH | 1 CAR

PRICE:
\$755,000

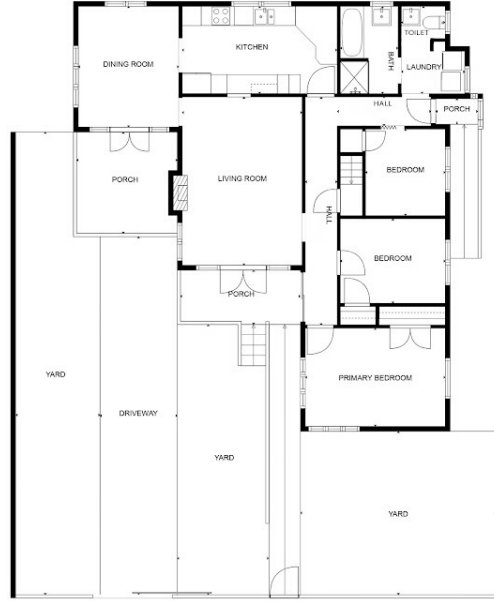
OPEN FOR INSPECTION:
N/A



Zarlane Grubisic
0225972427

zarlane.grubisic@realty.co.nz
www.atrealty.co.nz

16 SYLVAN CRESCENT



THIS FLOORPLAN IS PROVIDED WITHOUT WARRANTY OF ANY KIND. SENSOPIA DISCLAIMS ANY WARRANTY INCLUDING, WITHOUT LIMITATION, SATISFACTORY QUALITY OR ACCURACY OF DIMENSIONS.

Floor Plan by
www.fullexposurenz.com

Disclaimer: Please note this floor plan is for marketing purposes and is to be used as a guide only. All dimensions are estimates only and may not be exact measurements.