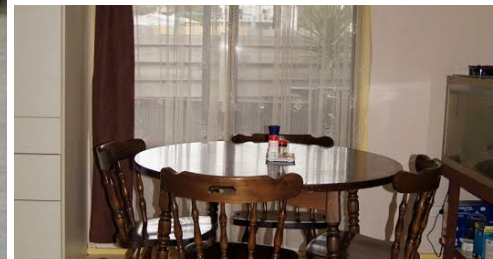


24 SONIA CRESCENT, PIONEER BAY, VIC, 3984



SOLD

WELL LOCATED VERSATILE LIFESTYLE FAMILY HOME

Beautifully looked after this quality home offers flexible living areas to suit all family members. Boasting three generous bedrooms, with self-contained apartment attached to the home with the option to make a master bedroom with parents retreat, or you could quite easily turn in to a fourth bedroom.

Living, dining and kitchen zones are open plan and positioned for easy access onto large timber sun deck with palms & ferns that overlook a lovely park, ideal for those summer BBQ's and entertaining.

Newly installed split system heating & cooling, wood heater to take care of those cold winter months.

Double garage, low maintenance fully fenced yard simply completes this fabulous package.... Only minutes to local shops and cafes, wineries and Phillip Island is approximately 25 minutes away.
Agent available 7 days a week.

3 BED | 2 BATH | 0 CAR

PRICE:
\$276,000

OPEN FOR INSPECTION:
N/A



Tamara Leskie
0448809458
tamara.leskie@atrealty.com.au
www.atrealtypropertyexperts.com.au