



SOLD

YOU'RE PERFECT NEXT STEP!!

Built in the 1990s and set on a cross-lease title (1/7 share of approximately 2157 sqm total land area), this solid townhouse is ready to move into and enjoy – with modern touches throughout that make it feel fresh and inviting.

The home has been kept immaculately tidy and neat, with recent upgrades including a refreshed kitchen and new vinyl flooring that adds warmth and style to every room. Inside you'll find two double bedrooms, a bright north-facing lounge complete with heat pump for year-round comfort, and single internal garaging for practicality and security.

With brick exterior and aluminum joinery, upkeep is effortless – leaving you more time to make the most of the private, fully fenced back yard. Perfect for growing vegetables or letting children and pets play freely.

This lovely home is ideal for first home buyers, investors, or those looking to downsize. Call today to arrange a private viewing, or join us at the next open home

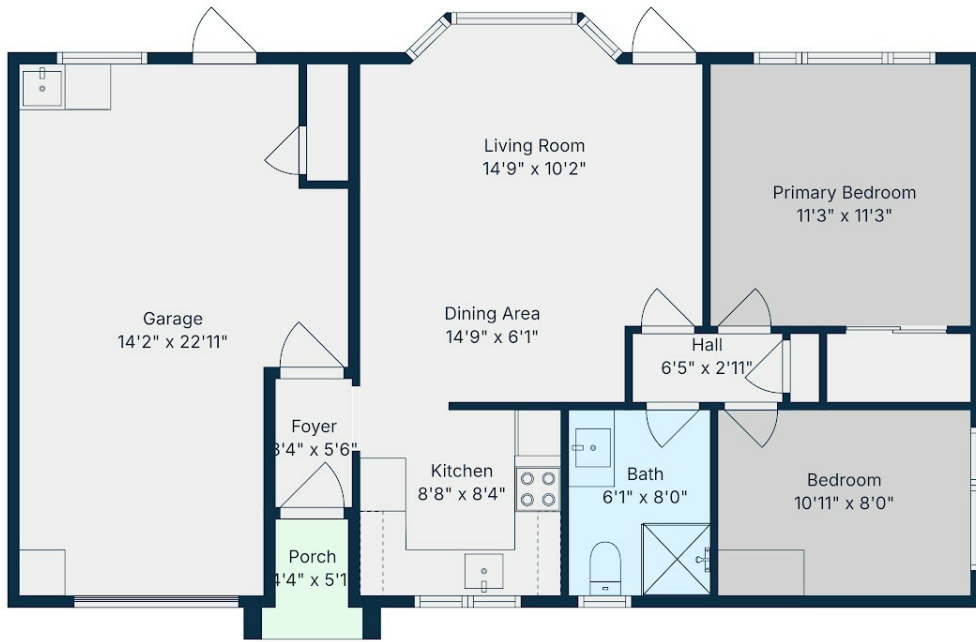
2 BED | 1 BATH | 1 CAR

PRICE:
\$376,000

OPEN FOR INSPECTION:
N/A



Randa Nicol
0211797786
randa@nicolrealty.co.nz
www.nicolrealty.co.nz



22B Moulson Street
Clifton



For Visual Purpose Only
 Drawings are approximate and to be used for visual representation only.
 Measurements should be verified by the buyer. We take no responsibility for omissions and errors.
 This floorplan is provided without warranty of any kind. Sensopia disclaims any warranty including, without limitation, satisfactory quality or accuracy of dimensions.
 Floor Plan by INSPIRE MEDIA WORKS

Disclaimer: Please note this floor plan is for marketing purposes and is to be used as a guide only. All dimensions are estimates only and may not be exact measurements.