



# FOR SALE

## RIVERSIDE SANCTUARY ON AN ACRE – WHERE SPACE MEETS COMMUNITY

Discover the tree-change you've been dreaming of at 6 Cumberland Court, Tarwin Lower – where genuine acreage living meets the warm embrace of village life. Set on a generous 1-acre (approx.) allotment, this beautifully presented 256m<sup>2</sup> home offers the space to breathe, while keeping you connected to everything that makes this riverside community so special.

### The Tarwin Lower Lifestyle

Nestled along the banks of the tidal Tarwin River, this historic South Gippsland village offers something increasingly rare – a genuine sense of place without isolation. Your morning coffee could start with a stroll down the famous riverside boardwalk, spotting white-bellied sea eagles and soaking in the tranquil waterway views. The local pub, café and supermarket are all within an easy walk, whilst the boat ramp is just moments away – perfect for chasing bream and flathead in the river or venturing out to Anderson Inlet and beyond.

With Venus Bay's pristine beaches just 6km away, Wilsons Promontory under an hour's drive, and Inverloch 24km down the road, you're perfectly positioned to embrace coastal living whilst enjoying the breathing space of acreage. The Aboriginal name 'Tarwin' means 'thirsty' or 'place to drink' – a fitting tribute to a river that's been the lifeblood of this community for generations.

### The Home

Step inside this light-filled, single-level residence where thoughtful design meets modern comfort. The heart of the home is the expansive open-plan living zone, where kitchen, dining and living spaces flow seamlessly together. The kitchen features sleek white cabinetry, warm timber benchtops and contemporary pendant lighting – a space equally suited to preparing weeknight dinners or hosting weekend gatherings.

Large double-glazed windows frame views across your private gardens, flooding the home with natural light whilst keeping energy costs down. Polished timber floors add warmth and character throughout, creating a welcoming canvas for your lifestyle.

The generous 19.5m<sup>2</sup> primary bedroom provides a peaceful sanctuary with space for a king-

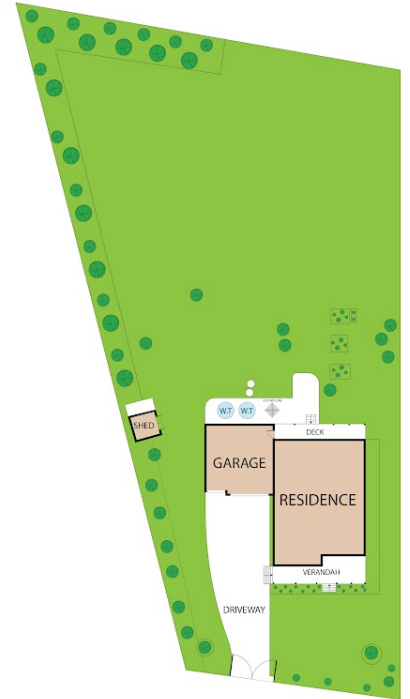
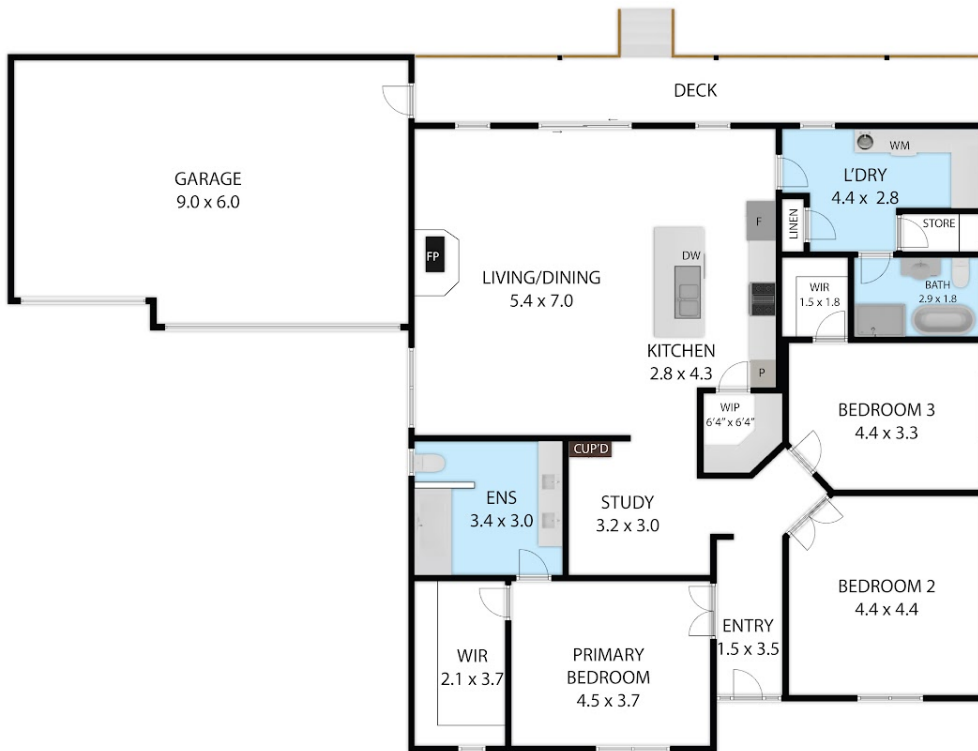
3 BED | 2 BATH | 6 CAR

PRICE:  
\$925,000 - \$995,000

OPEN FOR INSPECTION:  
N/A



**Leo Edwards**  
0472523445  
leo@atrealty.com.au  
[www.atrealty.com.au](http://www.atrealty.com.au)



6 Cumberland Court, Tarwin Lower, VIC, 3956

TOTAL APPROX. FLOOR AREA 256 SQ.M

Whilst every attempt has been made to ensure the accuracy of the floor plan contained here, measurements of doors, windows, rooms and any other items are approximate and no responsibility is taken for any error, omission, or misstatement. This plan is for illustrative purposes only and should be used as such by any prospective purchaser.

**INVERLOCH**  
REALESTATE

@realty

Disclaimer: Please note this floor plan is for marketing purposes and is to be used as a guide only. All dimensions are estimates only and may not be exact measurements.

Leo Edwards  
0472523445  
leo@atrealty.com.au  
[www.atrealty.com.au](http://www.atrealty.com.au)

@realty