



FOR LEASE

A COASTAL SANCTUARY IN THE HEART OF MERMAID BEACH – \$1,300 PER WEEK (UNFURNISHED)

Bathe in natural light and gentle sea breezes from this beautifully appointed 154m² east-facing residence, perfectly positioned on the third level of the boutique, residential-only Alexis Apartments with on-site management. Offering a refined blend of contemporary luxury and low-maintenance ease, this stunning apartment places you just moments from the Mermaid Beach foreshore and the vibrant Broadbeach dining precinct.

Designed for effortless coastal living, the home features three generous bedrooms, two sleek bathrooms and two secure car parks with additional storage. Premium finishes elevate every space, from the Smeg-equipped designer kitchen to the seamless indoor-outdoor connection leading to a spacious entertainer's balcony.

Wake to ocean air, unwind in complete privacy and enjoy the convenience of cafés, surf, shopping and world-class dining all within a short stroll. This is Mermaid Beach living at its finest.

Location Highlights

Approx. 3-minute walk to Mermaid Beach foreshore and Broadbeach dining precinct

Short stroll to Pacific Fair, The Star and the G light rail

Cafés, restaurants and everyday lifestyle amenities at your doorstep

Close to boutique shopping, quality schools and luxury hotels

Apartment Features

3 bedrooms | 2 bathrooms | 2 secure car parks + storage

Sun-drenched east-facing orientation with beautiful natural light and breezes

3 BED | 2 BATH | 2 CAR

PRICE:

\$1,300 per week

OPEN FOR INSPECTION:

N/A

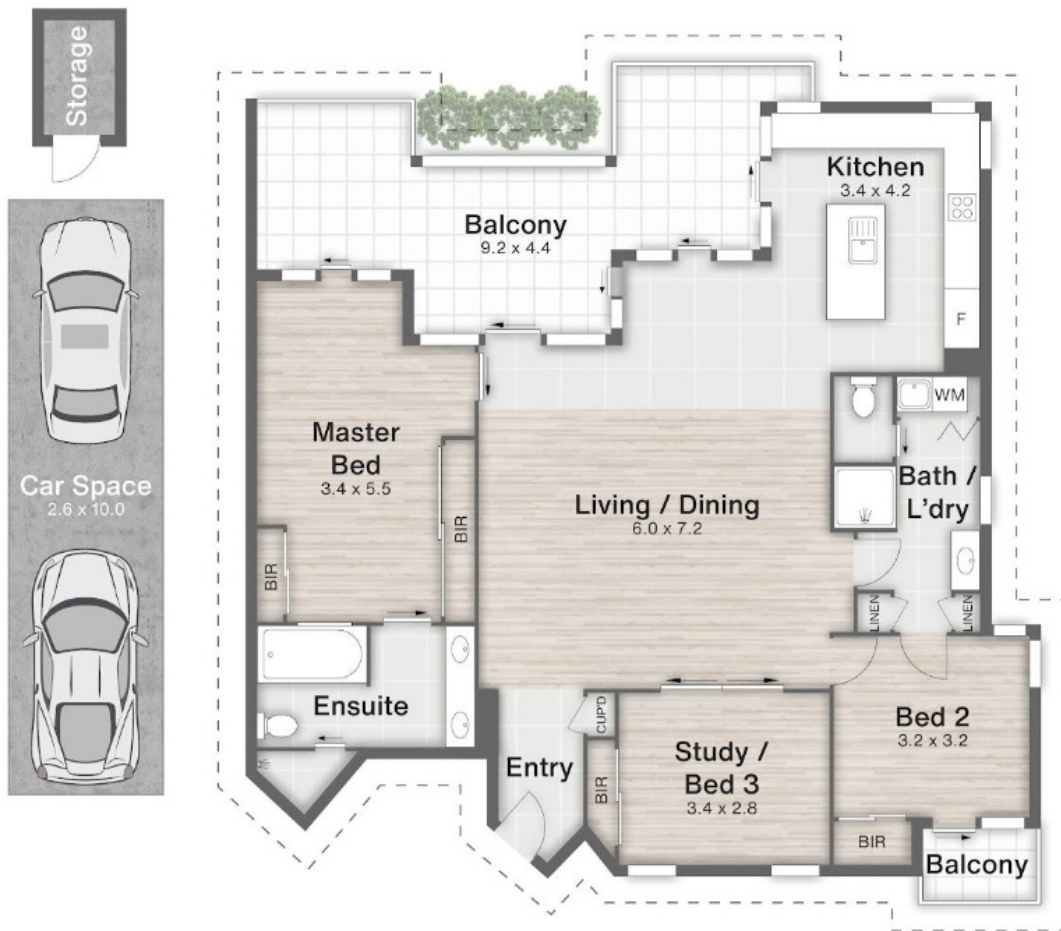


Luella Engelen

0474779450

luella@mandate2.com.au

mandate2.com.au



9/19 Mermaid Avenue **MERMAID BEACH**

3 | 2 | 2 | 154m²

Mandate
PROPERTIES

All dimensions are approximate; they are subject to errors and inaccuracies and no liability will be accepted. Plans are shown for marketing purposes only.

Disclaimer: Please note this floor plan is for marketing purposes and is to be used as a guide only. All dimensions are estimates living only and may not be exact measurements.

Luella Engelen
0474779450
luella@mandate2.com.au
mandate2.com.au

@realty