



SOLD

SPACE & SUNSHINE: MAIN HOME PLUS SLEEPOUT

Tucked away at the end of a private driveway, this exceptional three-bedroom home offers a rare blend of semi-rural tranquillity and modern versatility, all just moments from the Octagon. The main family home has been thoughtfully enhanced for year-round comfort with the addition of double glazing, ensuring a warm and quiet sanctuary. Upstairs, three well-proportioned bedrooms are served by a crisp family bathroom. The lower level is dedicated to effortless living, where a contemporary kitchen flows into expansive open-plan dining and lounge areas. Warmed by your choice of a wood burner or heat pump, this space captures ever-changing, panoramic views and transitions seamlessly to a large, sun-drenched deck, the perfect stage for summer entertaining. Practicality meets lifestyle with internal-access double garaging, a second toilet, a spacious laundry, and established gardens positioned to capture all-day sun. The independent sleepout adds significant value by providing a stylish and self-contained living solution. Beyond the private entrance and large carport, the interior boasts a spacious bedroom, a bright conservatory, and a functional kitchenette and dining area. Heated by a well-placed heat pump. This space offers a premium solution for extended family, a sophisticated home office, or a potential income stream, this versatile space delivers comfort and privacy in equal measure. With this home experience expansive, light-filled spaces and a scenic outlook that refuses to sacrifice city convenience. Act quickly this is a rare find indeed!

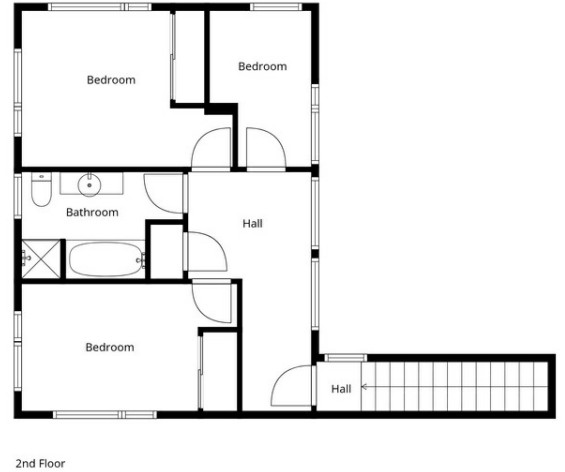
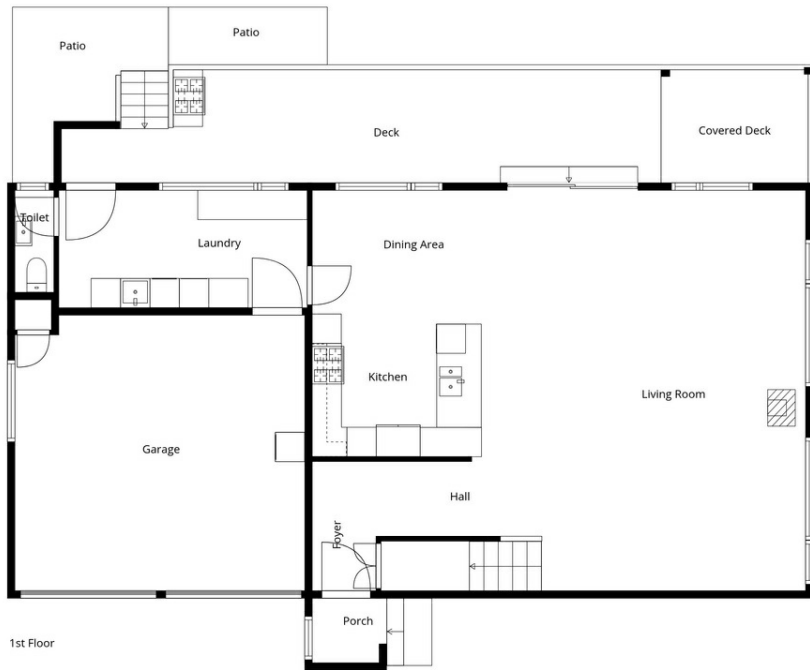
4 BED | 2 BATH | 3 CAR

PRICE:
\$790,000

OPEN FOR INSPECTION:
N/A



Tania Porteous
021476011
tania@thecollectiverealty.co.nz
www.thecollectiverealty.co.nz



Sizes And Dimensions Are Approximate, Actual May Vary

Disclaimer: Please note this floor plan is for marketing purposes and is to be used as a guide only. All dimensions are estimates only and may not be exact measurements.