



FOR SALE

EASYCARE NEST | PERFECT SPOT TO INVEST!

Offering the perfect blend of modern comfort, convenience and location, this architecturally designed townhouse sits privately back from the road in one of New Plymouth's most sought-after centrally located positions. Contemporary, light-filled, sunny and beautifully presented, it is truly a step above the ordinary.

The living spaces flow seamlessly to a private, sheltered courtyard creating a dedicated outdoor entertaining area ideal for relaxed evenings or hosting social occasions. All three bedrooms are generously proportioned. One is conveniently positioned on the ground floor, with a modern bathroom directly alongside for ease and comfort. Upstairs, two further spacious double bedrooms are complemented by a second well-appointed bathroom, offering excellent separation and privacy for guests or family.

Key Features:

- Freehold title - standalone position
- Three generous bedrooms, each with sizable wardrobes
- Two stylish, well-appointed bathrooms
- Smart two-storey design that maximises space and privacy
- Great storage throughout the home
- Internal access single garage with remote entry
- Additional off-street parking
- Compact, easy-care section - ideal for lock-and-leave living or freeing up your weekends

Location truly is everything! and this address delivers in spades. Just moments away is the renowned Pukekura Park, offering extensive walking tracks, botanical gardens and tranquil lake settings. Nearby, the iconic Bowl of Brooklands hosts world-class concerts and events, bringing unforgettable entertainment right to your doorstep. New Plymouth's city centre, with its restaurants, cafés and shopping, is an easy flat stroll away, along with the ever-popular Coastal Walkway. Walking or biking can easily become part of your daily routine, you may hardly need the car....

3 BED | 2 BATH | 1 CAR

PRICE:

Enquiries Over \$749,000

OPEN FOR INSPECTION:

Apr 19 at 3:00pm - 3:30pm

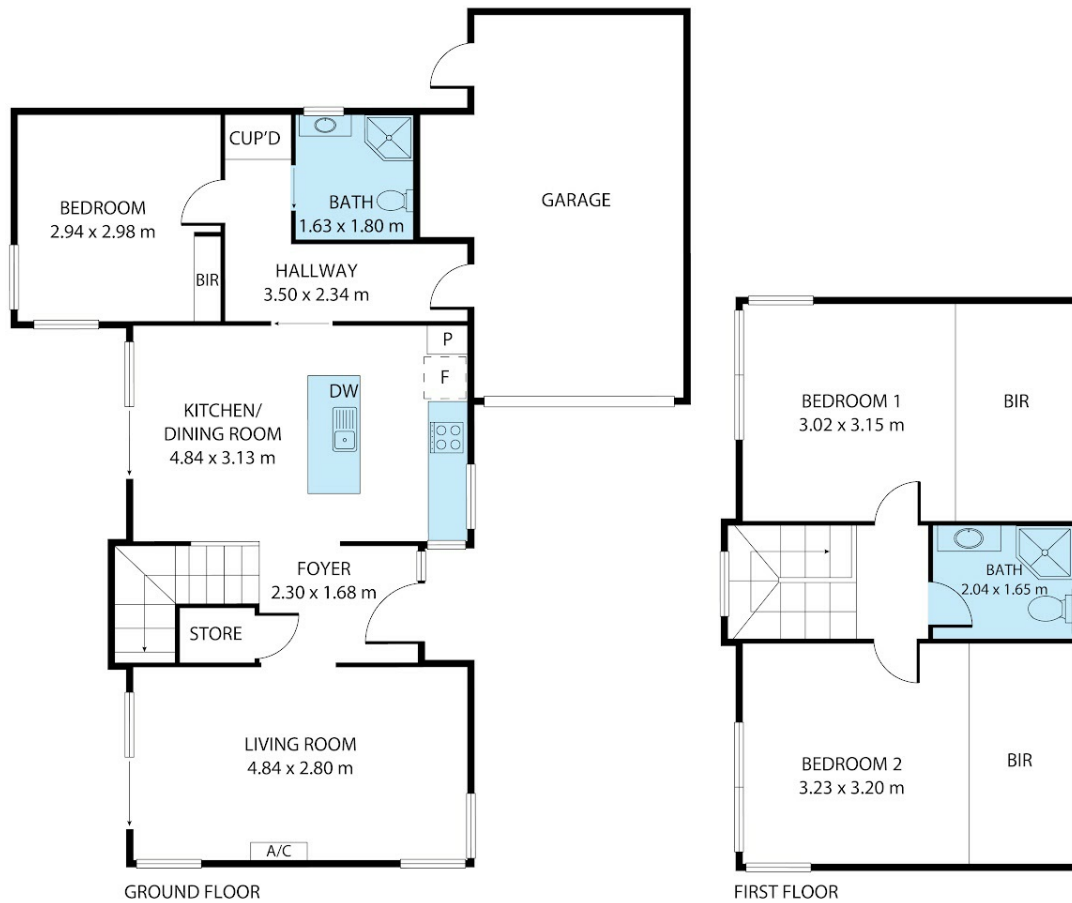


Delwyn McCurdy

0272850403

delwyn.mccurdy@realty.co.nz

www.atrealty.co.nz



This plan is for illustrative purposes only and should be used as such by any prospective purchaser.

Disclaimer: Please note this floor plan is for marketing purposes and is to be used as a guide only. All dimensions are estimates only and may not be exact measurements.