



FOR SALE

A RARE OPPORTUNITY

The home currently features two well-proportioned bedrooms and offers ample space for future expansion. There is excellent potential to extend or convert some of the deck, creating a three or even four-bedroom home to suit families, guests or those seeking additional living space. A generous 6m x 6m deck provides the perfect space for outdoor living and entertaining, or simply relaxing while taking in the tranquil natural surroundings.

Set on a spacious 1,140m² block, the property also offers outstanding infrastructure and storage options. A powered shed is complemented by a two-bay carport at the front, along with an additional large shed ideal for storing a boat, caravan or extra vehicles — perfect for those who enjoy outdoor adventures or require additional space.

Inside, the home is both comfortable and functional, with charming tongue-and-groove walls and ceilings that reflect classic Queensland style and add warmth and character throughout. The spacious bathroom features a large freestanding bathtub and separate shower, creating a relaxing retreat at the end of the day. The well-designed kitchen is highly practical, offering approximately eight metres of bench space and an integrated dishwasher, making it ideal for both everyday living and entertaining.

This is a truly special property that combines space, privacy and lifestyle in an exceptional location — one that is rarely available and difficult to replicate.

- 1,140 m² block
- High ceilings
- Tongue and Groove
- Spacious kitchen
- Large bathroom
- 6x6m Patio
- 6x7m lockable Garage/Workshop
- 6x7m undercover Carport
- Undercover area for camper/caravan
- Security cameras
- Short walks to amenities and services

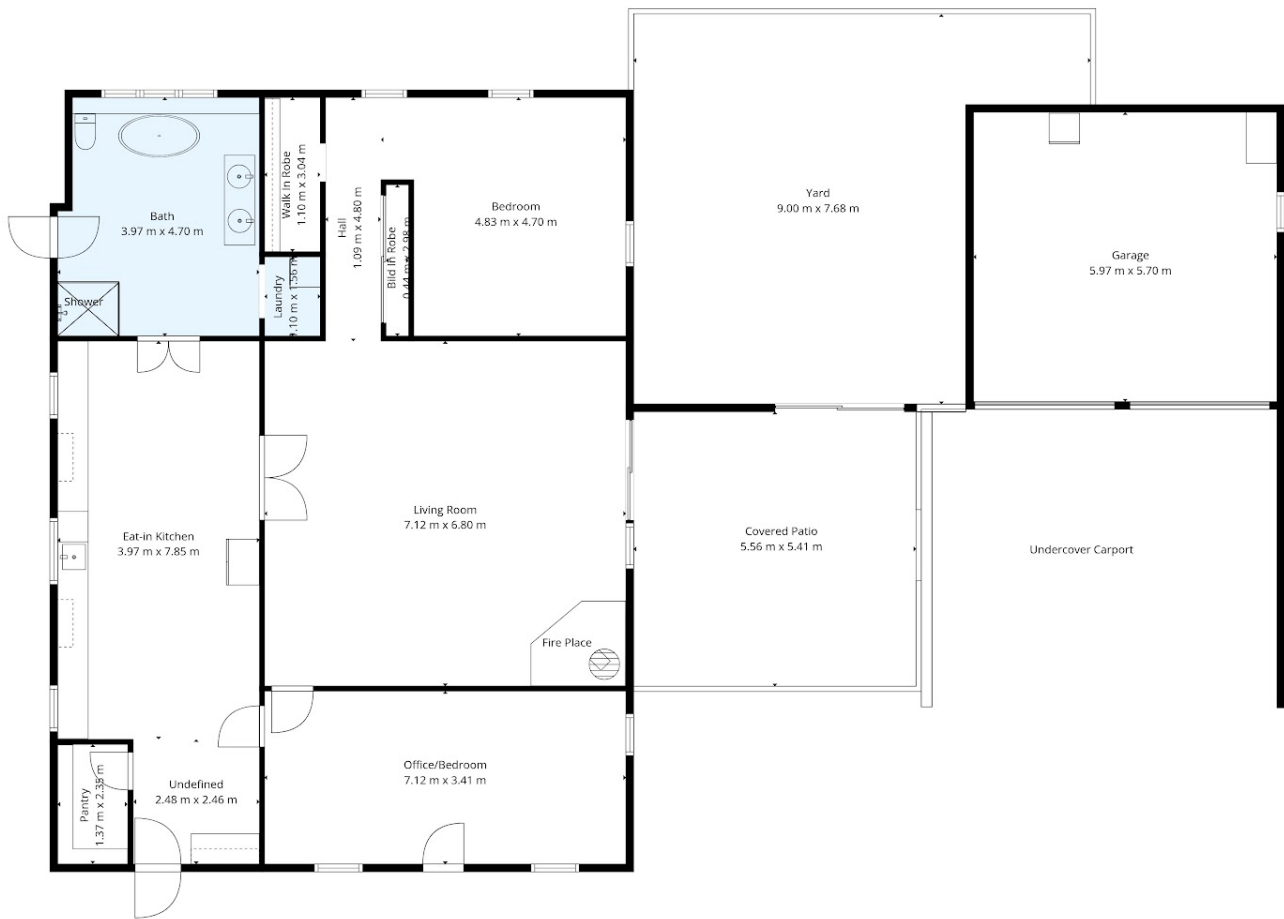
2 BED | 1 BATH | 4 CAR

PRICE:
Offers around \$549,000

OPEN FOR INSPECTION:
N/A



Susanne Reynolds
0408733149
susanner@atrealty.com.au
www.atrealty.com.au



Total: 199 m2

1st Floor: 199 m2

Excluded Areas: Walk In Robe: 3 M2, Covered Patio: 30 M2, Walls: 14 m2

Floor Plan Created By Cubikase App. Measurements Deemed Highly Reliable But Not Guaranteed.



Disclaimer: Please note this floor plan is for marketing purposes and is to be used as a guide only. All dimensions are estimates only and may not be exact measurements.