



FOR SALE

AUCTION ON SUNDAY

This remarkable dual-dwelling property presents a prime real estate opportunity. Offering exceptional investment and development potential on a substantial (approx) 1,002m² section in the heart of Pukekohe's rapidly expanding residential market.

Zoned for Residential – Mixed Housing Suburban, the site presents exciting possibilities for subdivision or townhouse development (subject to council approval).

With one freehold title and two separate homes with a combined 5 bedrooms and 2 bathrooms, the property generates over \$1,000 per week in rental income, allowing you to land-bank while planning your next project.

The front house boasts character with two double bedrooms and a bright kitchen. It's been rented long-term. The back home offers a larger floor area, featuring three double bedrooms, a spacious lounge seamless connecting to a sunny deck and a combined kitchen/ dining area. A covered carport provides easy parking.

Large or Extended families looking for space and flexibility, this unique setup is ideal for multi-generational living, providing separate dwellings for teenagers, grandparents, or a home and income option to help pay down the mortgage.

Conveniently located on East Street, just minutes from Valley School and with easy access to the Bombay motorway interchange, this property is ideally positioned in one of Auckland's fastest-growing towns. A rare opportunity to secure prime land with immediate income and future upside.

Our vendor's instructions are clear - this property must be sold on Auction day!

Auction at Franklin Club, 7 East St, Pukekohe on Sunday 19th April 2026, at 1pm (unless sold prior).

Conjunctionals invited – All agents welcome.

Contact Paula or Tina now for more information.

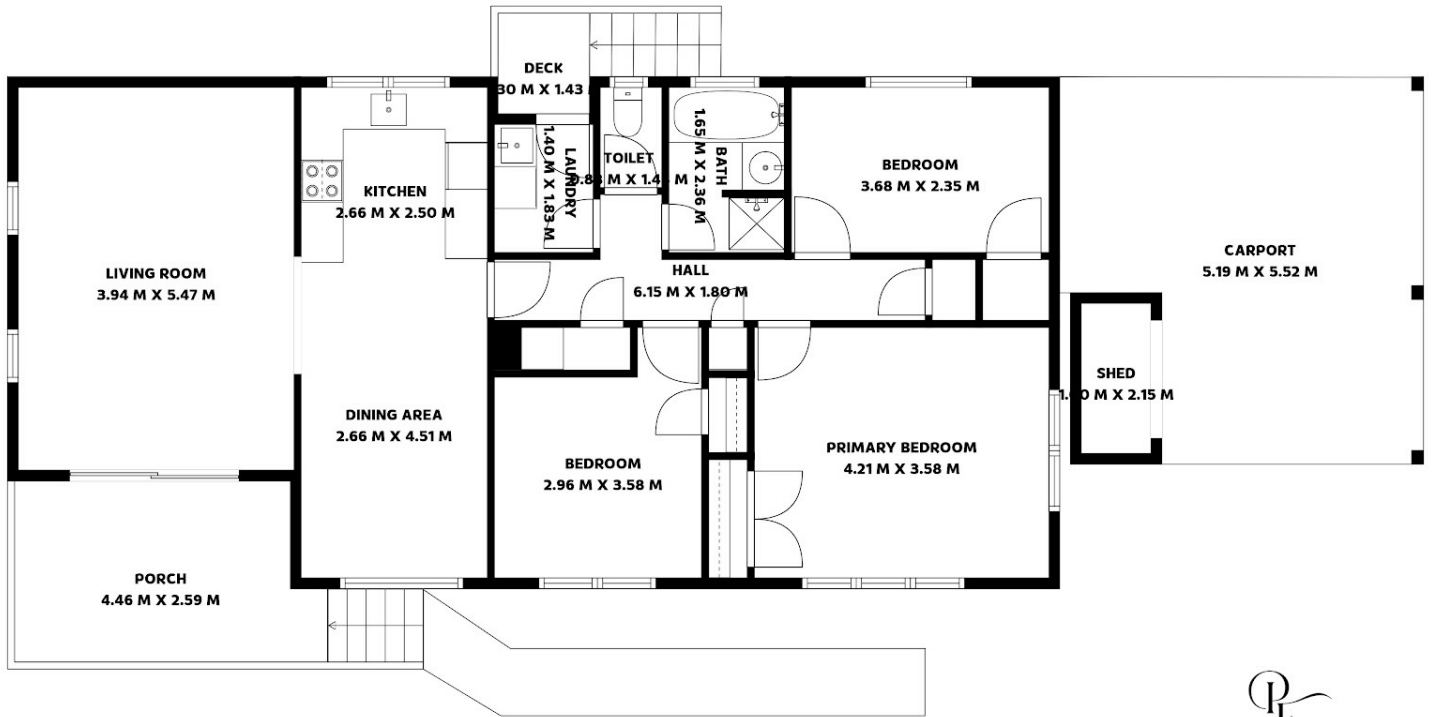
5 BED | 2 BATH | 2 CAR

PRICE:
Auction

OPEN FOR INSPECTION:
Apr 18 at 12:00pm - 1:00pm



Paula Ihaka
0204778874
paula@realty.co.nz
www.atrealty.co.nz



Floor Plan Created By Cubicasa App. Measurements Deemed Highly Reliable But Not Guaranteed.



Disclaimer: Please note this floor plan is for marketing purposes and is to be used as a guide only. All dimensions are estimates only and may not be exact measurements.