



FOR SALE

A TOWNHOUSE THAT STANDS APART

It's easy to assume townhouses are all much the same - until you come across one like this. Extremely well maintained and offering three bedrooms, it's a home that could suit downsizers, retirees, or anyone wanting space without the upkeep. With Mosgiel's shops just over 500 metres away, daily life becomes that much simpler.

The kitchen, dining and living area is where most of your time will be spent, and it works well as a space. The kitchen itself is modern and well designed, offering plenty of bench space, good storage, and a walk-in pantry to keep things organised. In the living area, you'll get good natural light, with a recessed heat pump there when you need it.

Open the stacker door and the space extends outside to a courtyard that's made to be enjoyed, not worked on. A couple of raised garden beds give you just enough to potter.

The main bedroom is thoughtfully arranged, with two built-in wardrobes and direct access to the bathroom, complete with a large walk-in shower. A separate second toilet with its own handbasin adds convenience.

The internal access garage gives you direct entry into the home and added security. Two outdoor sheds (powered) provide storage, including a mini workshop, and there's extra off-street parking as well.

Superbly maintained and easy to live in, this is a home that's ready to enjoy from the moment you step inside. Get in touch today to arrange a viewing - we're happy to accommodate times outside of open homes.

Collectively marketed by Team Robinson - four people working for you

3 BED | 1 BATH | 1 CAR

PRICE:
Price by Negotiation

OPEN FOR INSPECTION:
May 31 at 12:00pm - 12:30pm

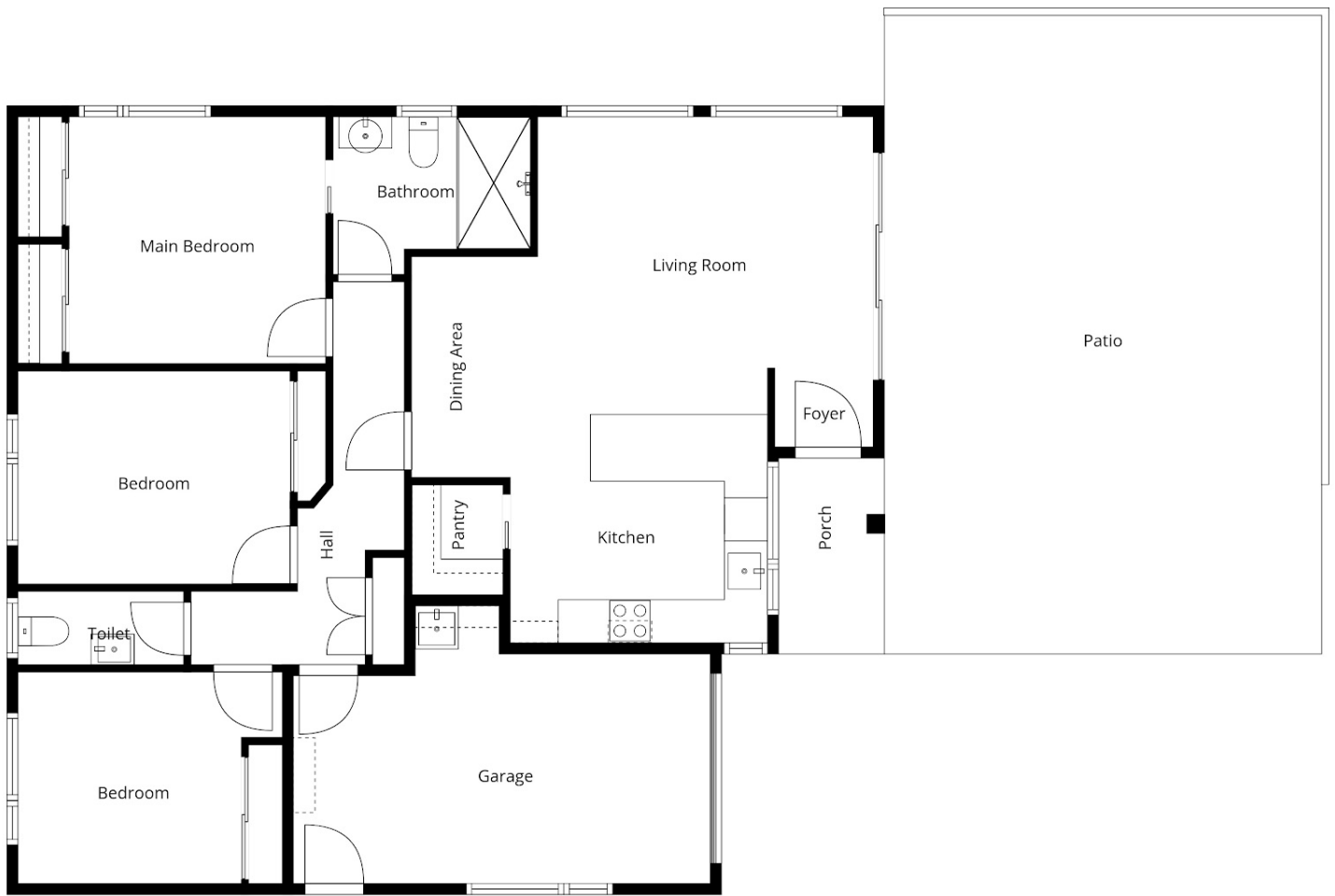


Team Robinson - Shane, Julie and Kendra

021953676

teamrobinson@thecollectiverealty.co.nz

www.thecollectiverealty.co.nz



Sizes And Dimensions Are Approximate, Actual May Vary

Disclaimer: Please note this floor plan is for marketing purposes and is to be used as a guide only. All dimensions are estimates only and may not be exact measurements.