

## FOR SALE

### COASTAL LIVING STARTS HERE – STYLISH FAMILY HOME MINUTES TO THE BEACH

AUCTION MAY 9th AT 11.00M - UNLESS SOLD PRIOR

Set in a prime Mount Coolum location just moments from the beaches, this stylishly four-bedroom home delivers relaxed coastal living with space, functionality, and effortless indoor-outdoor flow.

Polished timber floors bring warmth and character to the main living zones, while the well-positioned kitchen and meals area connects seamlessly via the dining area to a large covered entertaining space—perfect for weekend BBQs or unwinding while overlooking the beautifully established gardens.

The home offers four generous bedrooms, all with mirrored built-in wardrobes, including a spacious master complete with private ensuite. The centrally located bathroom has been tastefully renovated with floor-to-ceiling tiles, a bath, and shower-over-bath combination—ideal for families.

With an longer than standard single garage plus a double carport, there's plenty of room for vehicles, storage, or even a boat or trailer.

Positioned just minutes to pristine beaches, local cafes, and the Mount Coolum National Park, this is an outstanding opportunity to secure a quality home in a tightly held coastal pocket.

#### WHAT WE LOVE ABOUT THIS PROPERTY:

- FOUR generous bedrooms 3 with mirrored built-in wardrobes
- Generous sized master bedroom with private ensuite and WIR
- Attractive polished timber floors through main living areas
- Stunning bathroom with floor-to-ceiling tiles, bath + shower
- Central kitchen with lots of bench space, electric cooktop, oven & dishwasher
- Seamless indoor-outdoor flow to family sized large covered entertaining area for all year round enjoyment
- Beautifully maintained, established gardens
- Longer than standard single garage with rear roller door - plus double carport to the front of the

4 BED | 2 BATH | 3 CAR

PRICE:

OPEN HOME CANCELLED

OPEN FOR INSPECTION:

N/A

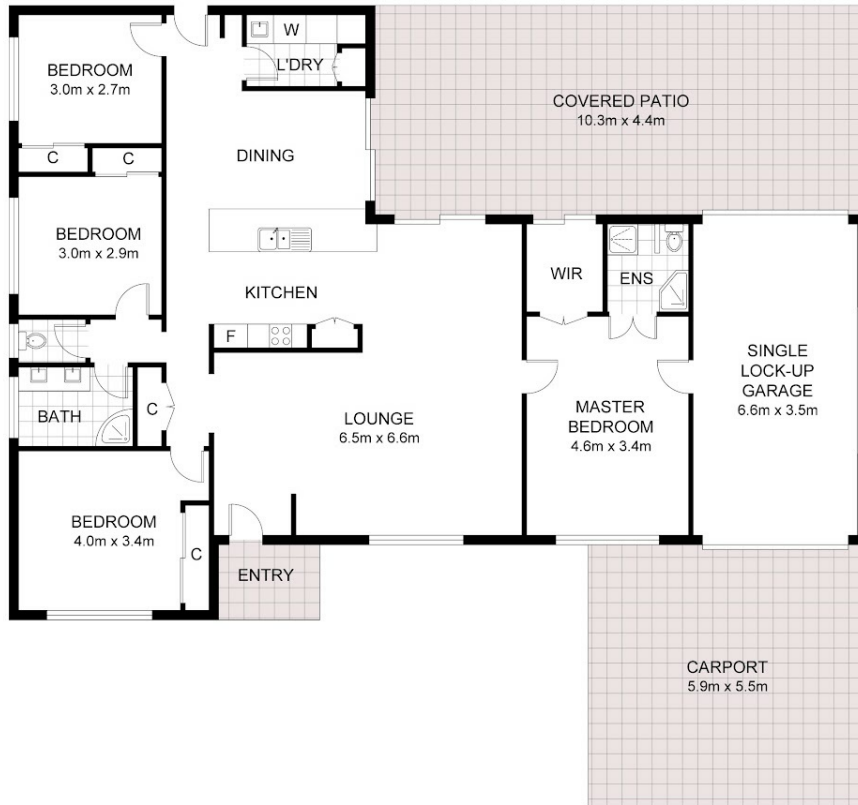


**Wendi Turner**

**0435770030**

wendi@atrealty.com.au

[www.atrealty.com.au](http://www.atrealty.com.au)



(Floor Plan For Illustrative Purposes Only)

Scale in metres. We give no guarantee, warranty or representation as to the accuracy and completeness of the floor plan. We recommend that you instruct your own surveyor to carry out an independent investigation of the property prior to relying on the accuracy and completeness of this plan. Floor plan created by [www.sunshinerealtyphotos.com.au](http://www.sunshinerealtyphotos.com.au)

42 BURREMAH CRESCENT, MOUNT COOLUM

Disclaimer: Please note this floor plan is for marketing purposes and is to be used as a guide only. All dimensions are estimates only and may not be exact measurements.