

19A SILVERWOOD LANE,
CAMBRIDGE, WAIPA, WAIKATO



FOR SALE

2 HOMES, 1 INCREDIBLE OPPORTUNITY

19A Silverwood Lane, Kotare Park – Home & Income Opportunity

Discover this exceptional home and income property in the heart of Kotare Park. Built by master builders Fowler Homes, this modern dual-living setup is perfect for investors, blended families, or anyone seeking flexibility and strong rental returns.

The main house features:

3 bedrooms, 2 bathrooms

Single garage

Stylish, contemporary finishes

Tucked to the side, the two-bedroom unit offers:

2 bedrooms, 1 bathroom

Private, separate access

Generous living spaces

Set on a large 615m² freehold section with rear garden views, this property offers multiple options: live in the main house and rent out the unit, use it for Airbnb, accommodate in-laws, or purchase purely for investment.

Rental appraisal:

Main house: \$750/week

Two-bedroom unit: \$600/week

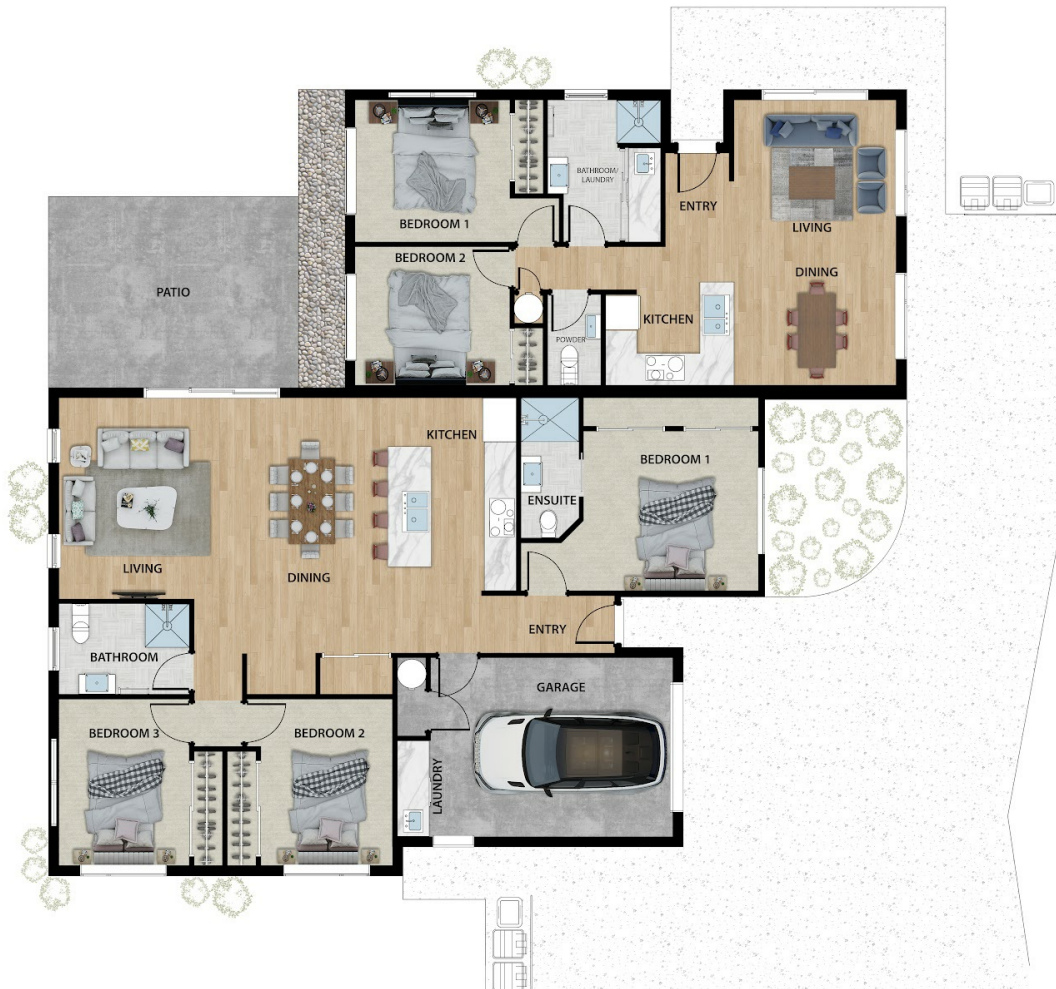
5 | 3 | 1

PRICE:
Asking price \$1,229,000



Sean Senior
02102317949
sean@realtyhq.co.nz
www.realtyhq.co.nz

@realty Limited Licensed REA 2008



Disclaimer: Whilst every effort has been made to ensure the accuracy of these particulars, no warranty is given by the vendor or the agent as to their accuracy. Interested parties should not rely on these particulars as representations of fact but must instead satisfy themselves by inspection or otherwise. (Rev NZ#2)