

FOR SALE

FAMILY LIVING WITH OPEN-PLAN DESIGN IN A QUIET COURT

29 Somerton Court, Darley VIC 3340

Nestled in a peaceful court, this beautifully presented 3-bedroom family home offers the perfect blend of comfort, style, and convenience. Featuring a practical open-plan layout and quality inclusions throughout, this home is ideal for first home buyers, growing families, downsizers, and investors alike.

At the heart of the home is the spacious open-plan kitchen, living, and dining area, designed to bring the family together while providing a seamless space for entertaining. The modern kitchen is well-equipped with ample bench space, generous storage, quality appliances, and a dishwasher, making everyday living effortless.

The home comprises three generously sized bedrooms, including a master suite with a private ensuite and walk-in robe. The remaining bedrooms are serviced by a central family bathroom, offering comfort and practicality for the whole family.

Year-round comfort is assured with a split system heating and cooling unit, while the double remote garage with internal access provides secure parking and added convenience.

Outside, the low-maintenance backyard offers plenty of space to relax, entertain, or enjoy with family and friends.

Property Features:

- 3 spacious bedrooms
- Master bedroom with ensuite and walk-in robe
- Spacious open-plan kitchen, living and dining area
- Modern kitchen with ample storage and dishwasher
- Central family bathroom
- Split system heating and cooling
- Double remote garage with internal access
- Low-maintenance backyard
- Quiet court location

Ideal for first home buyers, families, downsizers, and investors

Conveniently located close to local schools, childcare centres, parks, shopping facilities, public transport, and with easy access to the Western Freeway, this home offers an exceptional lifestyle in the heart of Darley.

Whether you're looking to move straight in or expand your investment portfolio, 29 Somerton Court is an opportunity not to be missed.

3 BED | 1 BATH | 2 CAR

PRICE:

\$440,000 - \$484,000

OPEN FOR INSPECTION:

N/A

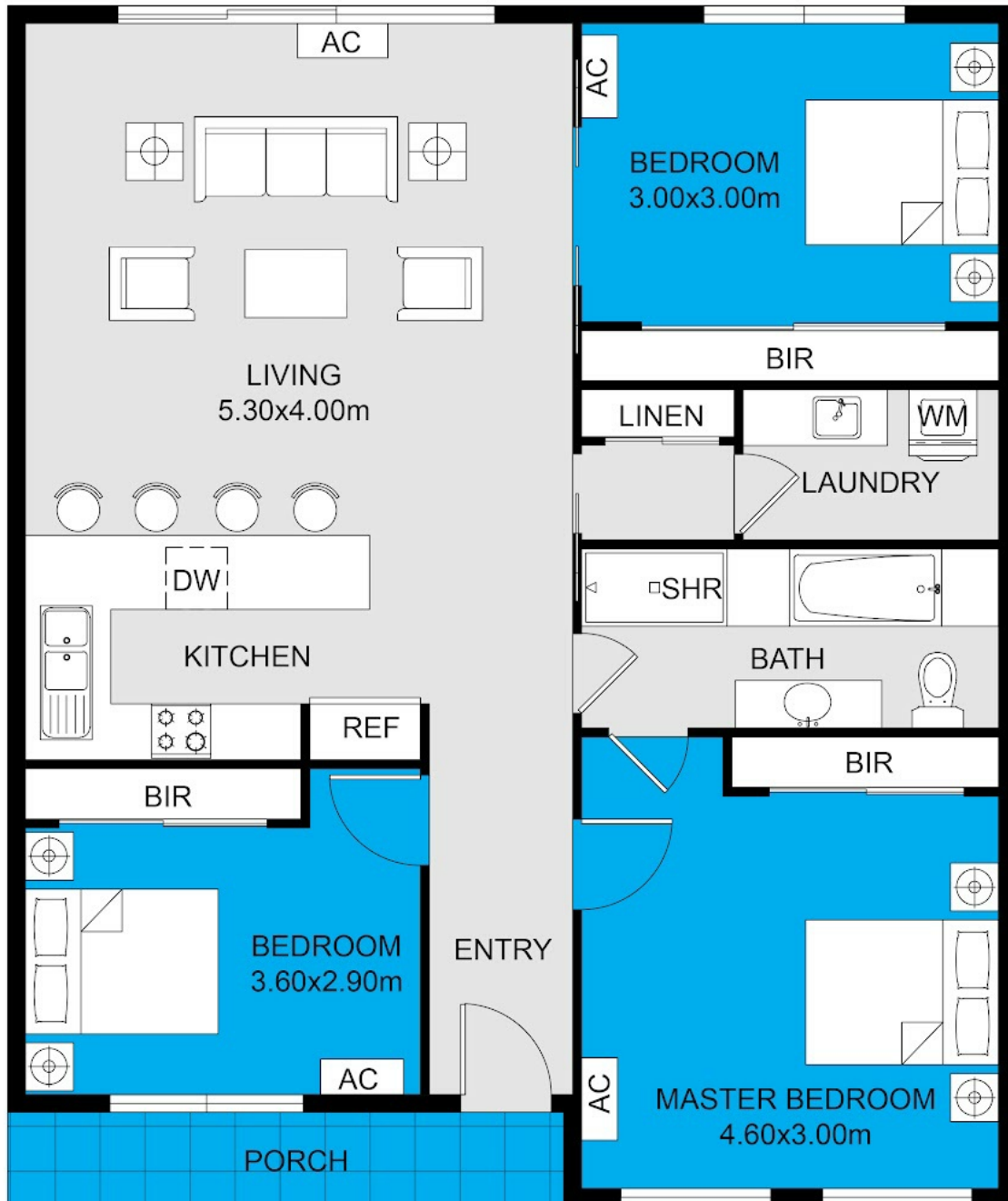


Kul Pathania

0406606600

kul@atrealty.com.au

www.atrealty.com.au



FLOOR PLAN

Disclaimer: Please note this floor plan is for marketing purposes and is to be used as a guide only. All dimensions are estimates only and may not be exact measurements.