



FOR SALE

CUTE THREE BEDROOM REAR TAWA UNIT

You can download property docs using this link
<https://www.luxerealty.co.nz/properties/282c-main-road-tawa-wellington-5028-76419>

This well-appointed 90-square-metre home offers the perfect blend of convenience and lifestyle, positioned in Tawa's thriving central corridor where everything you need is within easy reach.

Step inside and enjoy the warmth of the light-filled sunny living spaces and the practical layout makes it easy to relax or entertain. The thoughtfully designed interior features three comfortable bedrooms, each with a built-in wardrobe and the tidy single bathroom serves the home efficiently.

Outside you will discover your own private deck, small lawn and outdoor entertainment area, perfect for weekend barbecues or quiet morning coffees. The property includes secure parking with an Internal-access single garage with own car turn around bay. There is also additional parking on the driveway outside the unit.

The vibrant main road village centre places everything you need within easy reach. Numerous supermarkets, pharmacies, medical centres, diverse dining options and daily conveniences are all nearby.

This property represents an outstanding opportunity to secure a quality home in a location that perfectly balances suburban lifestyle with metropolitan convenience. Whether you're seeking your first home, looking to downsize without compromising on location, or building an investment portfolio, this rear Tawa unit delivers on all fronts.

The combination of practical features, desirable location, and strong community atmosphere makes this property a standout choice in today's market.

Further features include:

- Open-plan living and dining area, perfect for entertaining
- Three double bedrooms with wardrobes
- No Body Corp fee
- Internal-access single garage with own car turn around bay
- Additional parking on the driveway outside the unit

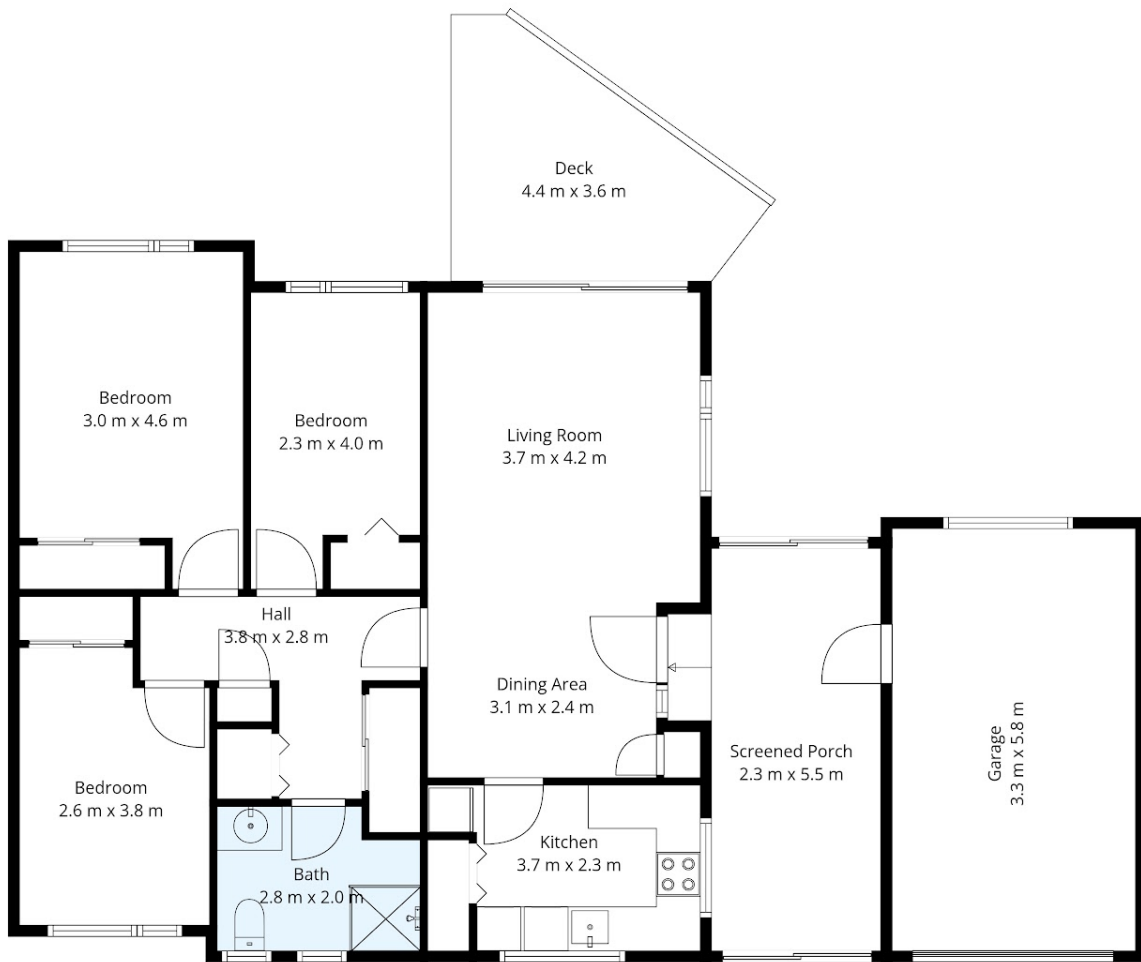
3 BED | 1 BATH | 1 CAR

PRICE:
Enquiries Over \$670,000

OPEN FOR INSPECTION:
Apr 19 at 1:00pm - 1:30pm



Dan Comeskey
021782532
dan@luxerealty.co.nz
www.luxerealty.co.nz



MEASUREMENTS AND DIMENSIONS ARE APPROXIMATE ONLY. ALL ENQUIRIES MUST BE DIRECTED TO THE AGENT, VENDOR OR PARTY REPRESENTING THIS FLOOR PLAN.



Disclaimer: Please note this floor plan is for marketing purposes and is to be used as a guide only. All dimensions are estimates only and may not be exact measurements.