



FOR SALE

SOLD BY THE KRIS & AMANDA TEAM

The Kris and Amanda Team are proud to present 4 Barossa Crescent, Caboolture South to the market for sale. This well-positioned, high-set home offers a fantastic blend of space, functionality, and future potential. Set on a generous 600sqm block with dual side access, this is an opportunity that will appeal to homeowners, investors, and those looking to add value over time.

Upstairs, the home features three good-sized bedrooms, all complete with built-in robes and ceiling fans. The layout is practical and family-friendly, with a combined kitchen, living, and dining area that flows out to a decked patio—perfect for relaxing or entertaining. The main bathroom features a shower, bath and basin plus a separate toilet and, while functional, presents an opportunity for future refurbishment to further enhance the home.

Downstairs offers excellent versatility, with a double garage, workshop space, and an additional toilet. This space is ideal for storage, hobbies, or future improvements.

Outside, the property continues to impress with plenty of usable space, including a 6m x 6m Titar shed with a full cement driveway, perfect for storing boats, trailers, or additional vehicles. Adding to the appeal is a substantial 14kw solar system with 36 panels, helping to significantly reduce energy costs.

Key Features:

- High-set home on a 600sqm block with dual side access
- 3 bedrooms with built-in robes and ceiling fans
- Functional kitchen, living & dining upstairs
- Decked patio area for outdoor living
- Bathroom with separate toilet (scope to refurbish)
- Air-conditioning to the master bedroom and lounge, ceiling fans throughout
- Double garage, workshop & additional toilet downstairs
- 6m x 6m Titan shed with lights, power and ceiling fans
- 14kw solar system (36 panels)
- Close proximity to Morayfield CBD, parks, shopping and family restaurants
- Note: The shipping container does not stay but could be negotiated separately

Price Guide: Offers over \$799,000

3 BED | 1 BATH | 4 CAR

PRICE:

offers over \$799,000

OPEN FOR INSPECTION:

N/A



Kris Sutcliffe

0437338665

kris.sutcliffe@atrealty.com.au

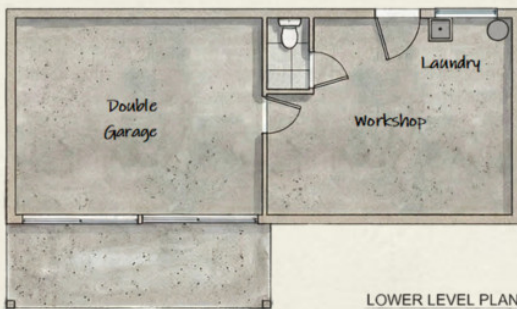
www.atrealty.com.au

4 Barossa Crescent, Caboolture South

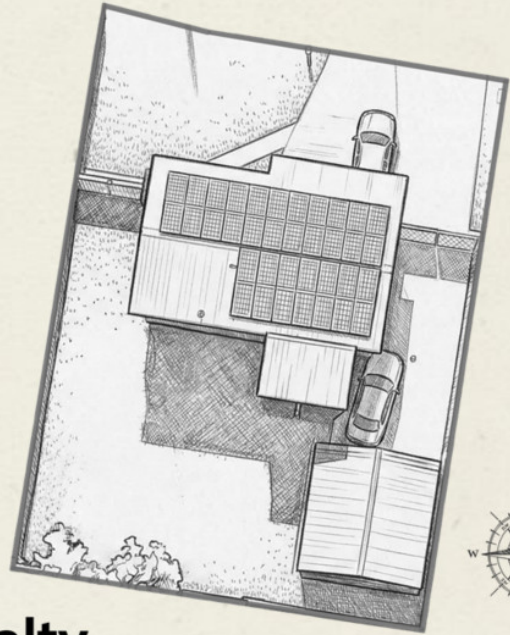
3 Bed | 1 Bath | 2 Toilets | 4 Car | 600sqm Block



MAIN FLOOR PLAN



LOWER LEVEL PLAN



@realty

Whilst every attempt has been made to ensure accuracy of the floor plan contained here, measurements of doors, windows, rooms and any other items are approximate and no responsibility is taken for any error, omission, or misstatement. This plan is for illustrative purposes only and should be used as such by any perspective purchaser.

Disclaimer: Please note this floor plan is for marketing purposes and is to be used as a guide only. All dimensions are estimates only and may not be exact measurements.