



FOR LEASE

WELL-PRESENTED, LOW-MAINTENANCE LIVING IN A PRIME MANNING LOCATION

WELL-PRESENTED, LOW-MAINTENANCE LIVING IN A PRIME MANNING LOCATION

***We DO NOT accept applications via REALESTATE.COM.AU/REIWA. YOU MUST APPLY using the provided application link sent to you once you enquire.

***PLEASE register your interest to view this property by submitting an enquiry/get in touch.

***APPLICATION. Apply for this property here - <https://tinyurl.com/3tnr43nn> . EACH PERSON over the age of 18 wishing to live at the property must apply and provide identification and supporting documents.

WELL-PRESENTED, LOW-MAINTENANCE LIVING IN A PRIME MANNING LOCATION

Positioned in one of Manning's most sought-after streets, and just moments from the open green spaces of McDougall Park, this well-maintained three-bedroom, two-bathroom home offers comfortable, easy-care living in a location that's hard to beat.

Neat, functional and move-in ready, the home is ideal for those seeking convenience without compromising on space or lifestyle.

Enjoy quick access to the Perth CBD via nearby Canning Highway, with public transport options close by. The ever-popular Welwyn Avenue precinct is just moments away, offering cafés, local shops, a gym, pilates, medical facilities, day care and more. Surrounded by a selection of well-regarded local schools, this location truly caters to lifestyle and convenience.

PROPERTY FEATURES

- Light-filled open plan kitchen, living and dining area
- Well-appointed kitchen with gas cooking, breakfast bar and large fridge alcove
- Ducted evaporative air conditioning throughout
- Three bedrooms, all with built-in robes
- Master bedroom with private ensuite
- Two separate undercover outdoor entertaining areas

3 BED | 2 BATH | 2 CAR

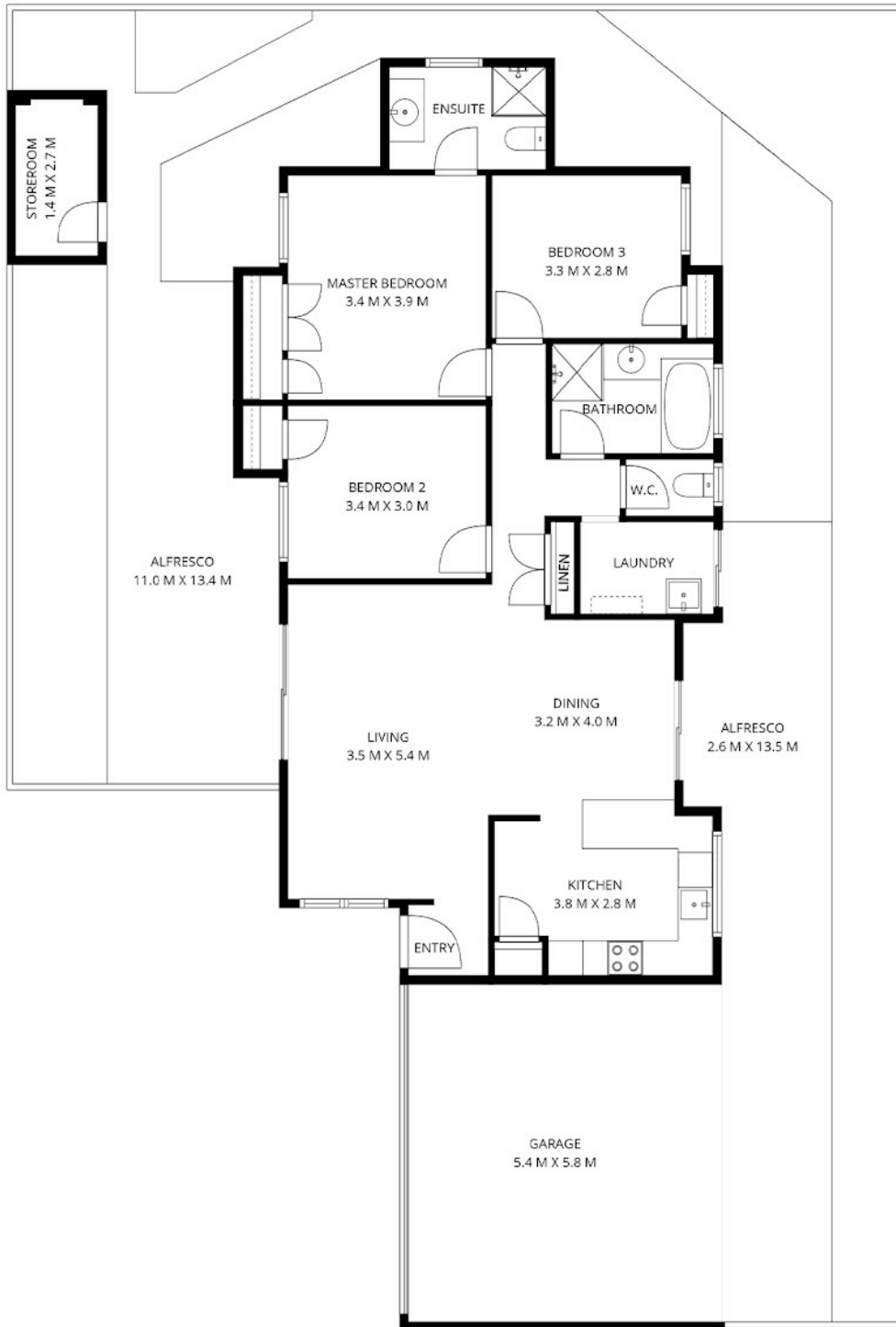
PRICE:
\$830 per week

OPEN FOR INSPECTION:
N/A



Jarrad Eaton
0403267251

jarrad@eatonproperty.com.au
eatonproperty.com.au



eaton property

3/5 Crawshaw Cres Manning

Disclaimer: Please note this floor plan is for marketing purposes and is to be used as a guide only. All dimensions are estimates only and may not be exact measurements.

www.eatonproperty.com.au
www.perthrealestatemedia.com

Jarrad Eaton
0403267251
jarrad@eatonproperty.com.au
eatonproperty.com.au



@realty