



**SOLD**

## ENTRY LEVEL INVESTMENT WITH RIVER VIEWS

This full brick top floor unit is light and bright with an abundance of natural light and a generous floor plan.

- Two double bedrooms with built in robes
- Spacious lounge room with expansive windows and direct access to a private balcony
- Internal laundry combined with the bathroom
- The kitchen has a dishwasher, freestanding oven, easy care vinyl plank flooring and space for a dining table
- convenient linen cupboard and a new hot water system

The property is located walking distance to the Mersey river and the spirit of Tasmania ferry terminal. There are buses directly out the front and a designated parking spot. Currently leased at \$260 pw until September 2026.

Levies - \$432.20 per Quarter

### Disclaimer:

Whilst Richard Jackson @ Realty has taken every care to verify the accuracy of the details in this property listing, we cannot guarantee its correctness. Prospective buyers need to take such action as is necessary, to satisfy themselves of any pertinent matters.

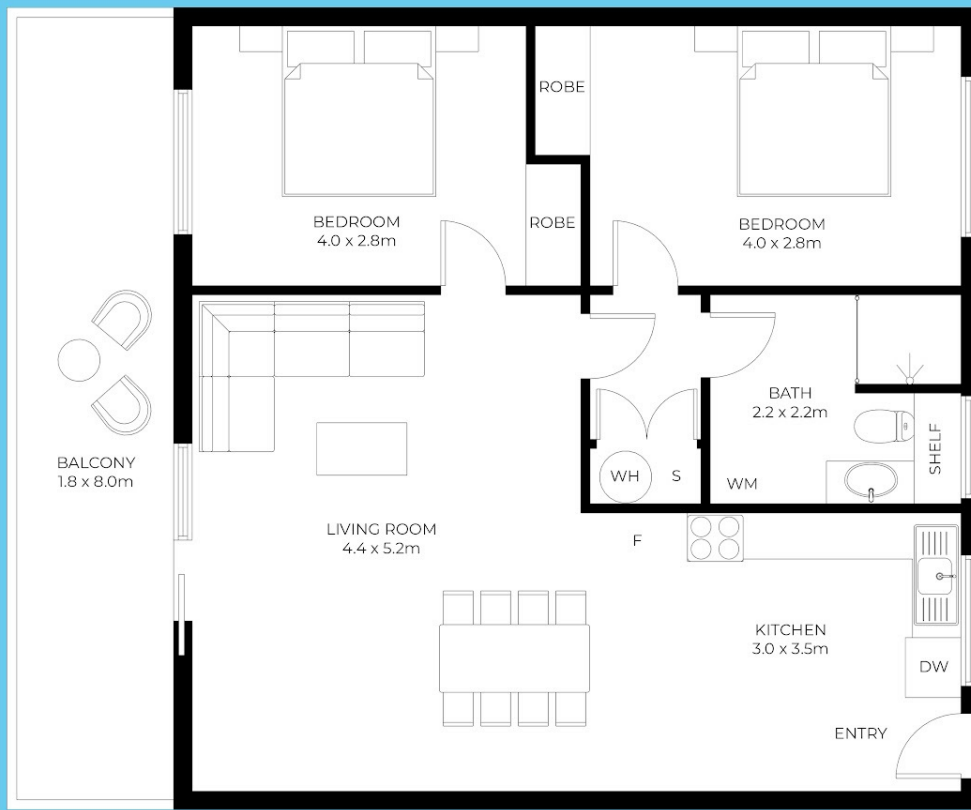
**2 BED | 1 BATH | 1 CAR**

**PRICE:**  
\$271,000

**OPEN FOR INSPECTION:**  
N/A



**Richard Jackson**  
**0403711289**  
richardjackson@atrealty.com.au  
[www.atrealty.com.au](http://www.atrealty.com.au)



**15/145 Tarleton Street, East Devonport**

Internal 67m<sup>2</sup> | External 14m<sup>2</sup> | Total 81m<sup>2</sup>

Richard Jackson  
0403 711 289



2 Bed 1 Bath

This floor-plan is a guide for marketing use only.  
Dimensions and square metre measurements are approximate.

Disclaimer: Please note this floor plan is for marketing purposes and is to be used as a guide only. All dimensions are estimates only and may not be exact measurements.

Richard Jackson  
0403711289  
richardjackson@atrealty.com.au  
[www.atrealty.com.au](http://www.atrealty.com.au)

