



FOR SALE

EXPRESSION OF INTEREST CLOSING SATURDAY 6/6/26 AT 5PM

Perfectly positioned on a prime corner block of approximately 425m², directly opposite parklands, this stylish double-storey home delivers space, flexibility, and an exciting opportunity to run a home-based business (STCA).

Built by Carlisle Homes, this light-filled residence is ideal for growing families, professionals, or buyers seeking extra versatility.

Key Features:

- Spacious master suite with ensuite, walk-in robe and private balcony access, located upstairs to the front of the home
- Open-plan kitchen, meals and living area which leads out to the alfresco for all-season dining
- Upstairs kids area with four bedrooms, bathroom, separate toilet, activity space and study nook
- Formal lounge located at the front of the home for entertaining guests
- Built in 6000L rain water tank for front and back garden auto watering system
- Fully landscaped front & rear gardens – low-maintenance and family friendly
- Double Garage with internal access
- Premium Carlisle Homes build with thoughtful layout and quality finishes throughout
- Double glazed doors and windows
- Premium exposed aggregate driveway and exposed aggregate concrete pathways around the house with expertly crafted water drainage points
- CCTV for security
- Premium Carlisle Build: double glazing, high ceilings, stone bench tops

Previously operated as a spa and beauty business, this home presents a fantastic opportunity for those looking to set up a home salon or workspace (STCA).

Conveniently located close to schools and parklands, this is a home that combines lifestyle, comfort, and potential.

Move in, work from home, and enjoy the lifestyle. Enquire today

Disclaimer: While every effort has been made to ensure the accuracy of these particulars, no

4 BED | 2 BATH | 2 CAR

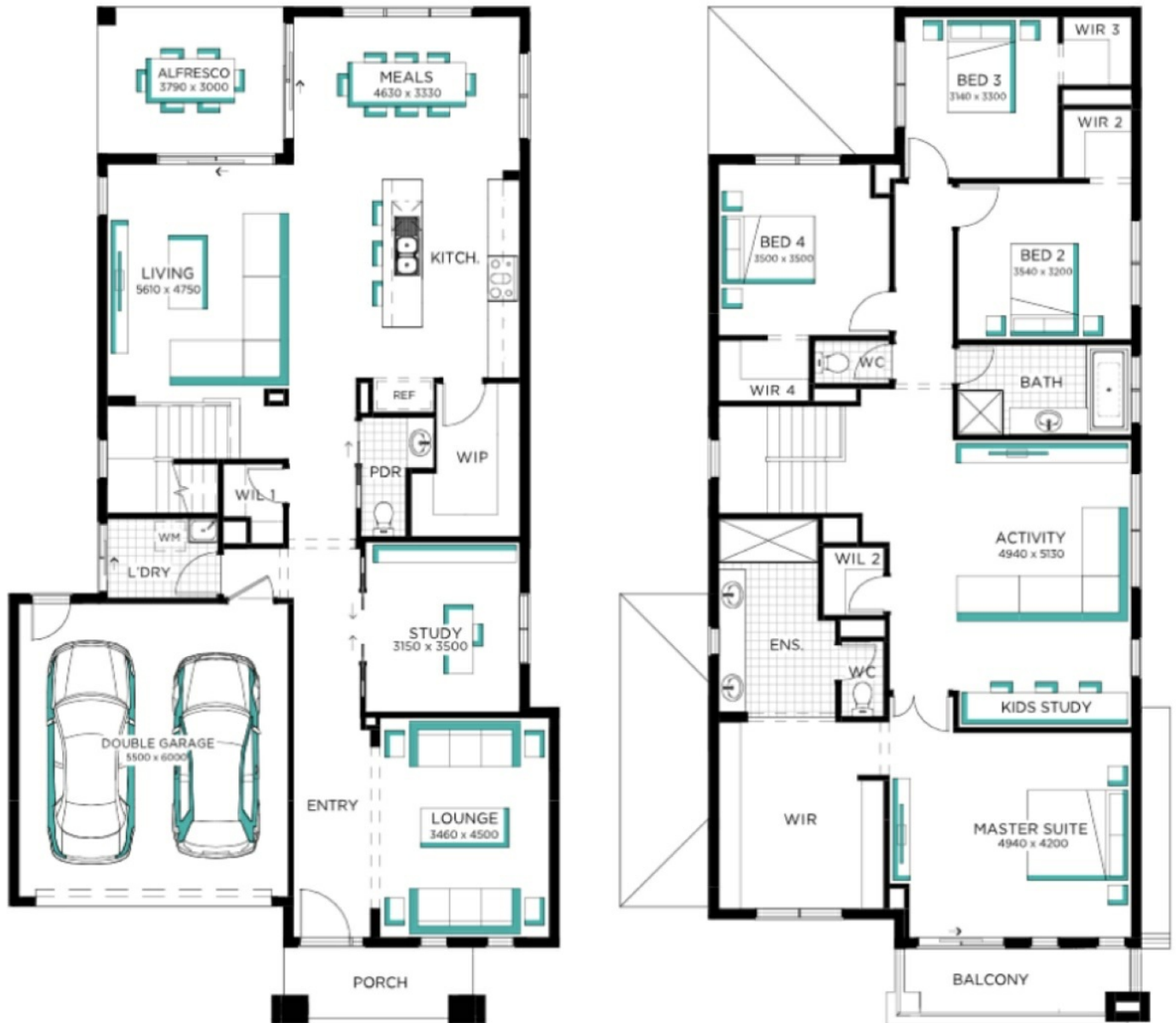
PRICE:
Contact Agent

OPEN FOR INSPECTION:
May 24 at 12:00pm - 12:30pm



Rachel Doan
0415689699

rachel.doan@atrealty.com.au
www.atrealty.com.au



Disclaimer: Please note this floor plan is for marketing purposes and is to be used as a guide only. All dimensions are estimates only and may not be exact measurements.