

42 EAGLEVIEW ROAD, MINTO, NSW, 2566



FOR SALE

DUAL LIVING ON 5,748SQM - LIFESTYLE, SPACE & STRONG INVESTMENT RETURNS

Set on an expansive 5,748sqm parcel in one of Minto's peaceful semi-rural pockets, this exceptional dual-occupancy estate presents a rare opportunity for families, investors, or multi-generational living. Offering two substantial residences, extensive shedding, resort-style entertaining, and impressive rental income, this is a property that delivers both lifestyle and long-term potential.

The main residence has been thoughtfully updated and designed for growing families, combining spacious interiors with modern comforts and seamless indoor-outdoor living. The second residence offers the perfect opportunity for extended family accommodation or an additional income stream, creating a versatile property with endless possibilities.

Main Residence Features:

- Four oversized bedrooms with built-in wardrobes
- Home office or optional fifth bedroom
- Master suite complete with walk-in robe and private ensuite
- Multiple formal and informal living zones opening onto the rear veranda through stunning timber French doors
- Timber kitchen featuring granite benchtops, breakfast bar, gas cooking, stainless steel appliances, dishwasher, and ample storage
- Beautifully renovated main bathroom with dual basins, freestanding bathtub, and floor-to-ceiling tiling
- Laundry with additional third toilet
- Zoned ducted air conditioning
- Freshly painted with new flooring
- High ceilings and LED downlights throughout
- Large undercover alfresco/veranda ideal for entertaining
- Inground swimming pool
- Massive multipurpose barn featuring; two car-sized roller doors, One truck/caravan-sized roller door and office space with toilet facilities
- Double garage
- Dual driveway access with drive-through gates to the backyard
- Huge backyard with limitless potential

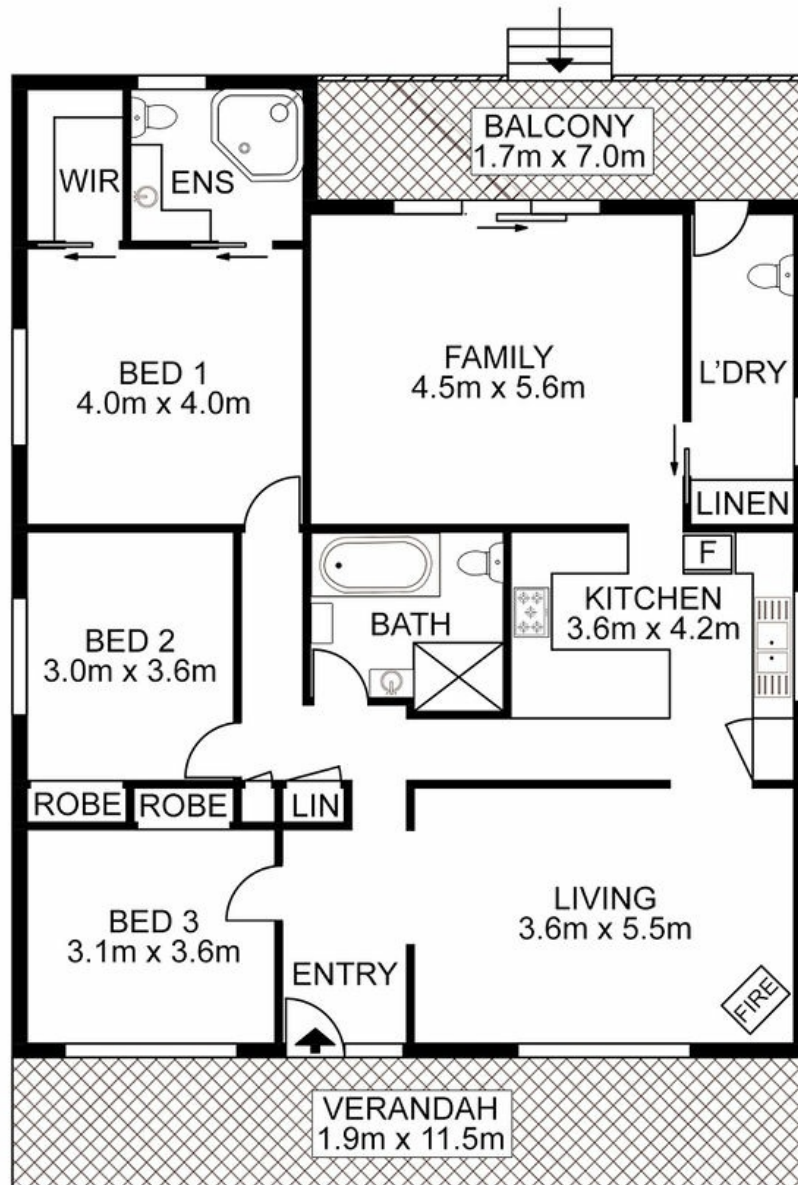
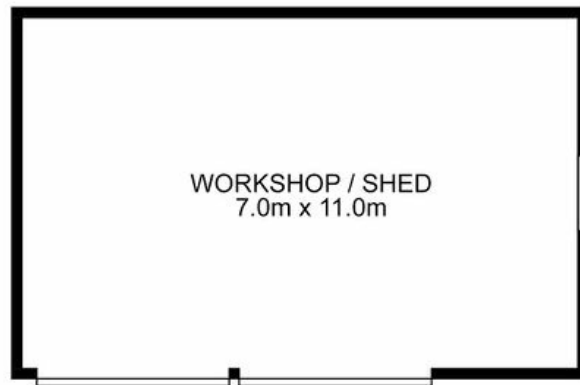
8 BED | 5 BATH | 8 CAR

PRICE:
Just Listed

OPEN FOR INSPECTION:
N/A



Huss Al Salemi
0411699419
huss@atrealty.com.au
www.agencycentral.com.au



 AGENCY

Disclaimer: Please note this floor plan is for marketing purposes and is to be used as a guide only. All dimensions are estimates only and may not be exact measurements.

42A Eagleview Road, Minto

Huss Al Salemi • All measurements are approximate • Drawn for marketing purposes only

0411699419

huss@atrealty.com.au

www.agencycentral.com.au

