



FOR SALE

NOW REPOSITIONED NOW OFFERS OVER \$1,199.000 - EXCEPTIONAL VALUE ON 786M² – MUST BE SOLD

Outstanding Value – Act Fast

If you've been waiting for the right opportunity — this is it.

Act quickly — homes with this much on offer, at this price level, don't last

Now repositioned to meet the market, this impressive home represents exceptional buying for those looking to secure space, lifestyle, and long-term value.

From the moment you step inside, you'll appreciate the generous proportions, multiple living zones, and versatile layout designed to suit growing families, entertainers, or savvy buyers wanting more for their money

Flexible Living | Resort-Style Entertaining | Space for the Whole Family

If you've been searching for a home that truly delivers on space, lifestyle, and flexibility — this is your opportunity.

Positioned on a generous 786m² flat block, this substantial residence has now been strategically repositioned to meet the market, presenting outstanding value for buyers ready to act.

Designed with growing families and entertainers in mind, the home offers multiple living zones and a highly adaptable layout that evolves with your needs.

A Home That Adapts to You

Step inside to discover expansive open plan living, complemented by additional lounge and dining areas that can easily transform into a fifth bedroom, butler's kitchen, or hobby space — giving you complete flexibility.

A separate games room, dedicated study, and home gym ensure there's space for work, relaxation, and family life — all under one roof

Your Private Outdoor Retreat

The lifestyle continues outdoors, where a covered entertaining area overlooks a sparkling inground pool with slide — perfect for Queensland summers.

A separate gazebo and pool hut create the ultimate setting for entertaining, while the large, flat yard provides plenty of room for kids and pets to enjoy

Key Features:

- 4 spacious bedrooms & ensuite
- 2 bathrooms

4 BED | 2 BATH | 2 CAR

PRICE:

Offer above \$1,199.000

OPEN FOR INSPECTION:

N/A

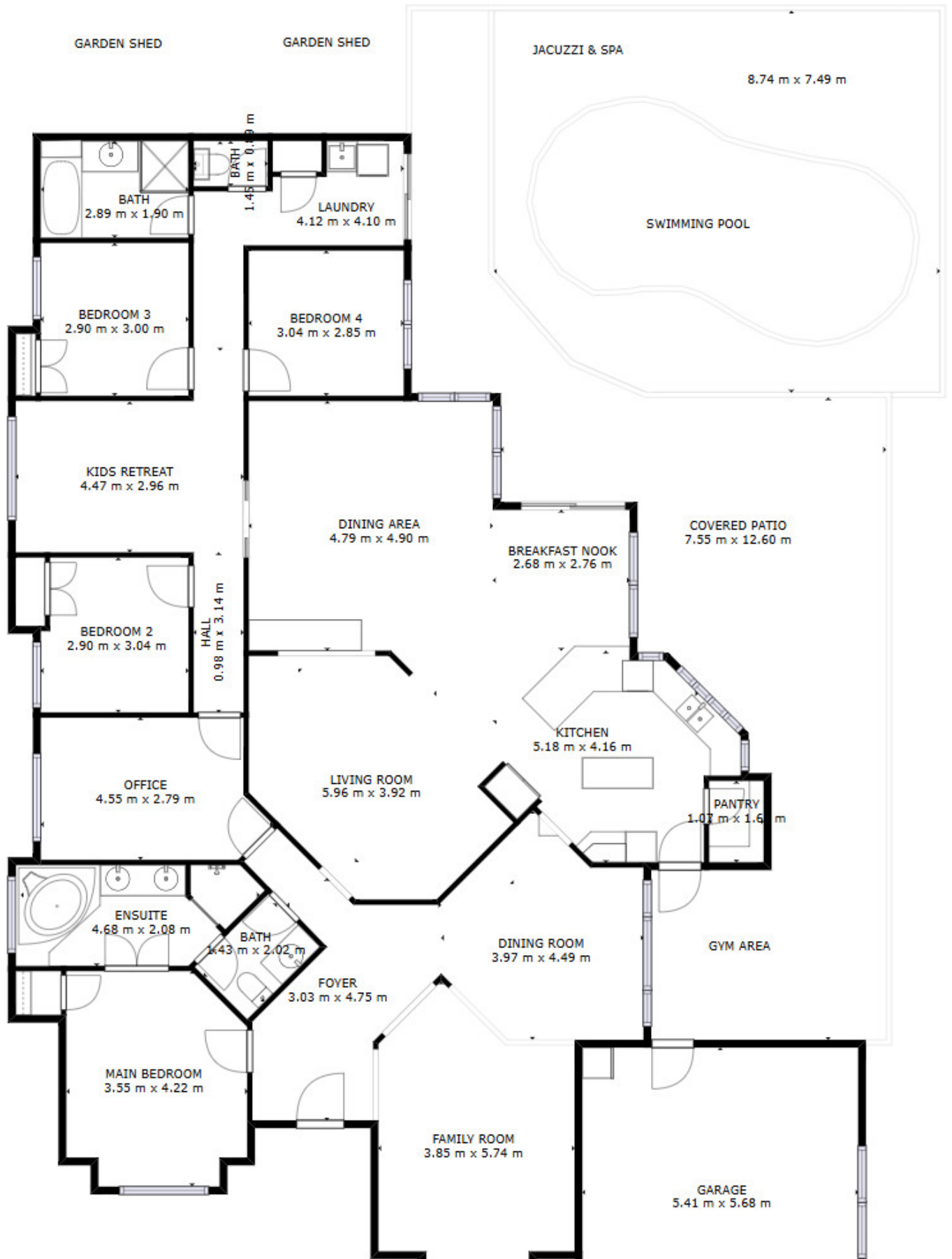


Beverley Gibbons

0420807083

beverley.gibbons@atrealty.com.au

www.atrealty.com.au



Disclaimer: Please note this floor plan is for marketing purposes and is to be used as a guide only. All dimensions are estimates only and may not be exact measurements.

The information contained in this floor plan is provided as a guide only. No warranty or representation is made as to its accuracy, completeness, or suitability. Measurements, boundaries, and layout may vary. All interested parties should make their own independent enquiries and seek professional advice where necessary.

Beverly Gibbons

0420807083

beverley.gibbons@atrealty.com.au

www.atrealty.com.au

