



FOR SALE

NOT ALL TOWNHOUSES ARE CREATED EQUAL...

Welcome to 3/137 View Road, Sunnyvale – a stylish and contemporary home that perfectly blends comfort, convenience, and smart design. Built by the trusted Williams Corporation, this beautifully presented end-unit townhouse offers effortless living in a fantastic, well-connected location.

Spread across three thoughtfully designed levels, this home features two spacious bedrooms and two modern bathrooms. With a bedroom and bathroom on both Level 1 and Level 2, the layout is ideal for flatmates, guests, or those seeking added privacy and flexibility.

Constructed with durable brick cladding, this home offers timeless appeal alongside low-maintenance living. As an end unit set back from the road, you'll enjoy enhanced privacy, peace, and an abundance of natural light.

Step outside to your own private courtyard, complete with easy-care astroturf and a garden shed – perfect for relaxing or entertaining without the upkeep. The property also includes a dedicated off-street car park with an EV charger, catering to modern lifestyles.

Key Features:

- 2 bedrooms and 2 bathrooms across 3 levels
- Smart layout with bedrooms and bathrooms on separate levels – ideal for flatmates
- Built by Williams Corporation
- Solid brick construction for durability and low maintenance
- End unit for extra privacy and light
- Private courtyard with astroturf and garden shed
- Off-street car park with EV charger
- Set back from the road for quiet living

The owners are motivated and prepared to meet the market, making this an outstanding opportunity for buyers ready to act.

With many townhouses available, finding the right one can be a challenge – but this is the one you don't want to miss. It simply has to be at the top of your viewing list.

2 BED | 2 BATH | 0 CAR

PRICE:

Asking price \$649,000

OPEN FOR INSPECTION:

Apr 18 at 1:00pm - 1:30pm

Apr 19 at 1:00pm - 1:30pm

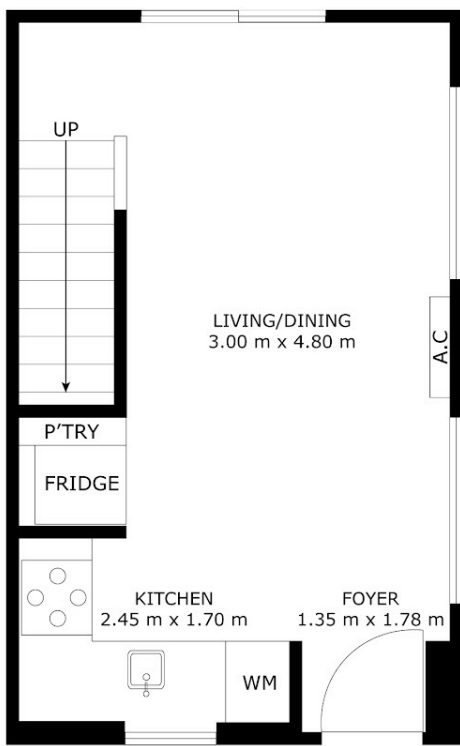


Amy Anderson

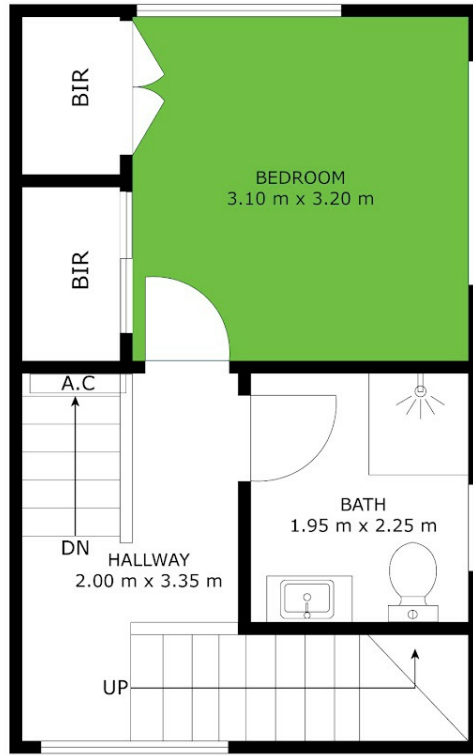
0274723600

amy.anderson@universalre.co.nz

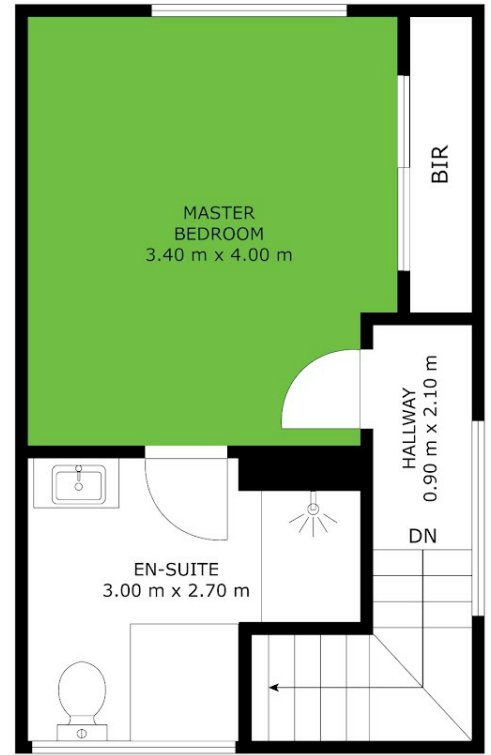
www.universalre.co.nz



GROUND LEVEL



LEVEL 1



LEVEL 2

3/137 View Road, Sunnyvale

DISCLAIMER: Images are for representation purposes only and should be used as such by any prospective buyer. Measurements are approximate taken from internal walls and no responsibility is taken for any omissions or errors.



Disclaimer: Please note this floor plan is for marketing purposes and is to be used as a guide only. All dimensions are estimates only and may not be exact measurements.