



# FOR SALE

## PRIVATE ACREAGE LIVING ON 5 ACRES BASICALLY IN TOWN!

Set on approximately 5 acres near the Nanango Golf Course, 26 G S Wilson Drive offers a peaceful acreage lifestyle with space, privacy, and a Queenslander style home with upgraded kitchen and bathroom.

The property suits a range of uses, with a dam attracting birdlife including ducks, space for animals or horses, and a chook shed already in place, and internal fencing into two paddocks. Water is well covered with approximately 80,000 litres of rainwater storage across four tanks, and the home runs entirely on tank water.

The home is comfortable and functional, with high ceilings, a fireplace and a large air conditioner in the lounge. There are three large bedrooms, plus an office/sunroom. The main is a generous super-king-sized room with air conditioning, a walk-in robe and space to add an ensuite if desired. The second bedroom is queen-sized with air conditioning and wardrobe, while the third includes a ceiling fan.

The kitchen has been recently renovated and is a standout, featuring a large island bench, electric oven, gas cooktop and walk-in pantry with plenty of storage, while a recently updated bathroom adds to value on offer.

A large rear verandah provides a great space for outdoor living, entertaining, and dining (marked as 'screened porch' on the floorplan). It is currently enclosed with temporary screening which can be easily removed to suit your needs.

At the rear of the home is a large rumpus-style room which incorporates the laundry. This space offers flexibility as a second living area, games room or a man-cave.

The sunroom/office includes vinyl plank flooring, adding to the practicality of the home.

Vehicle storage is excellent, with a four-bay carport plus an additional igloo structure providing a fifth covered space.

Located just a short drive to Nanango and within easy reach of Kingaroy, this is a property that

3 BED | 1 BATH | 5 CAR

PRICE:

O/O \$699,000 Contact Julian

OPEN FOR INSPECTION:

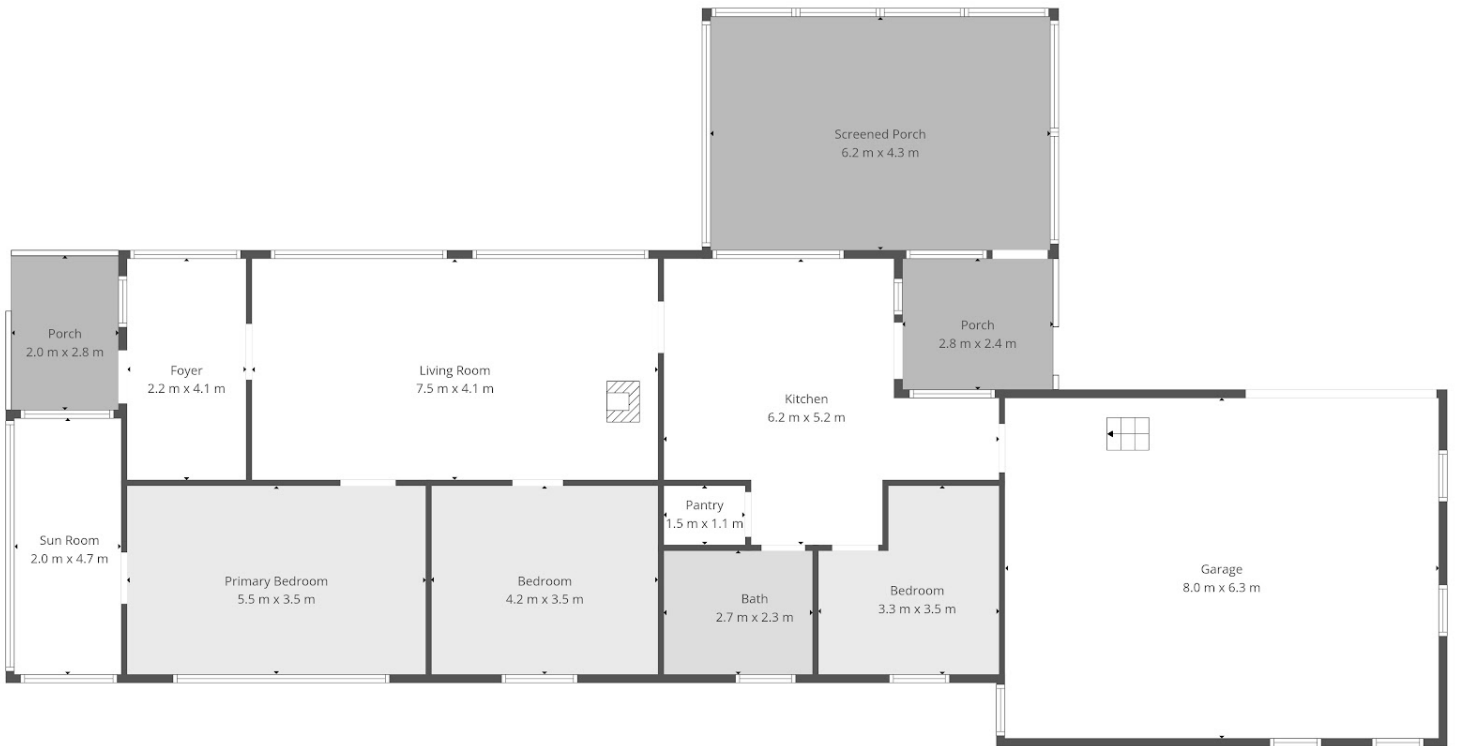
N/A



**Julian Gregson**  
**0421577537**

[julian.gregson@atrealty.com.au](mailto:julian.gregson@atrealty.com.au)

[www.juliangregson.com.au](http://www.juliangregson.com.au)



Floor plan is provided as indicative layout only. Measurements are not available, floor plan is not to scale. No guarantees provided on accuracy. Exterior elements are not in position

Disclaimer: Please note this floor plan is for marketing purposes and is to be used as a guide only. All dimensions are estimates only and may not be exact measurements.

