



FOR SALE

WHERE THE STREET ENDS AND THE PADDOCKS BEGIN

At the end of Burgess Street, where the neighbourhood gives way to farmland, this home offers something a little different. The outlook is wide and green, and yes - the horses sometimes wander right up to the fence, close enough to feed from your own backyard.

Inside, the home keeps things simple, and that's exactly what makes it work. The front door opens into an open-plan living, dining and kitchen area that feels easy to live in. The kitchen is well set up with good storage, ample bench space, and a breakfast bar that quickly becomes the social hub. A wood burner adds warmth in winter, while a heat pump keeps things comfortable year-round.

From here, it flows out to a deck that works as an extra room in the warmer months. It's the kind of spot where mornings start slowly and evenings tend to stretch on - equally suited to quiet coffee or a full table of friends.

Three bedrooms are complemented by a modern bathroom with both a bath and shower, along with the practicality of a separate laundry. Storage is well considered throughout, and the garage sits at street level.

The section offers room to move, with space for kids to run and pets to roam.

The calm surroundings don't compromise convenience - you're still within easy reach of Green Island's shops and services, with straightforward access to the motorway for commuting into the city or heading out towards Mosgiel.

If you're looking for a home that's well cared for, easy to live in, and set in an open, gorgeous spot, this is well worth your time to come and see.

Deadline Sale closing at 4.00pm on Wednesday 29 April 2026 - prior offers considered (price indication: \$620,000 plus)

Collectively marketed by Team Robinson - four people working for you

3 BED | 1 BATH | 1 CAR

PRICE:

Deadline sale. Deadline date
29/04/2026

OPEN FOR INSPECTION:

Apr 15 at 5:30pm - 6:00pm
Apr 19 at 12:00pm - 12:30pm

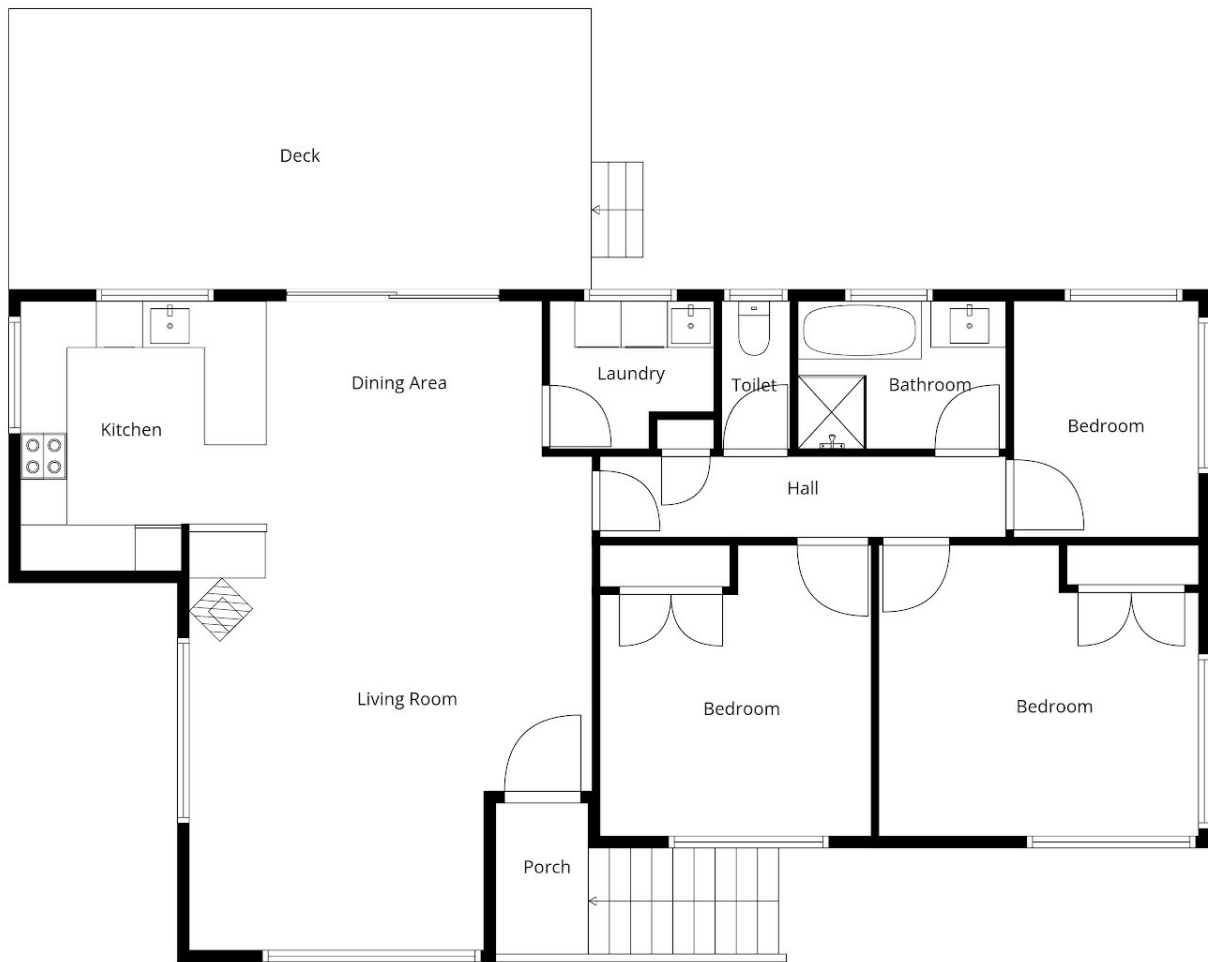


Shane and Julie Robinson

021953676

teamrobinson@thecollectiverealty.co.nz

www.thecollectiverealty.co.nz



Sizes And Dimensions Are Approximate, Actual May Vary

Disclaimer: Please note this floor plan is for marketing purposes and is to be used as a guide only. All dimensions are estimates only and may not be exact measurements.