



FOR SALE

BEAUTIFUL FAMILY HOME WITH SPACE, COMFORT & OUTDOOR ENTERTAINING

Welcome to 33 Ritchie Crescent, a beautifully presented home perfectly positioned in a quiet, family-friendly street. Offering a seamless blend of comfort, functionality, and lifestyle, this property is ideal for growing families or savvy investors alike.

Step inside to discover a light-filled interior featuring polished timber floors that add warmth and character throughout. The spacious lounge room provides a relaxing retreat, complete with a cosy fireplace—perfect for those cooler months—while ducted air conditioning ensures year-round comfort. The heart of the home is a well-appointed kitchen, fitted with quality Miele appliances, ample storage, and a practical layout that flows effortlessly into the dining and family areas—ideal for everyday living and entertaining.

Boasting three generously sized bedrooms, two of which include built-in wardrobes, plus a separate study, there's plenty of room for the whole family. The functional floorplan also includes a central 3-way bathroom, separate toilet and internal laundry for added convenience. Outdoors, you'll love the expansive covered gazebo area—perfect for hosting gatherings or enjoying relaxed weekends. The low-maintenance yard and additional patio space complete the outdoor appeal.

This is a fantastic opportunity to secure a well-maintained home with all the essentials in place. Simply move in and enjoy!

Don't miss your chance to inspect—this one won't last long. Phone Peter Bullman today for more information.

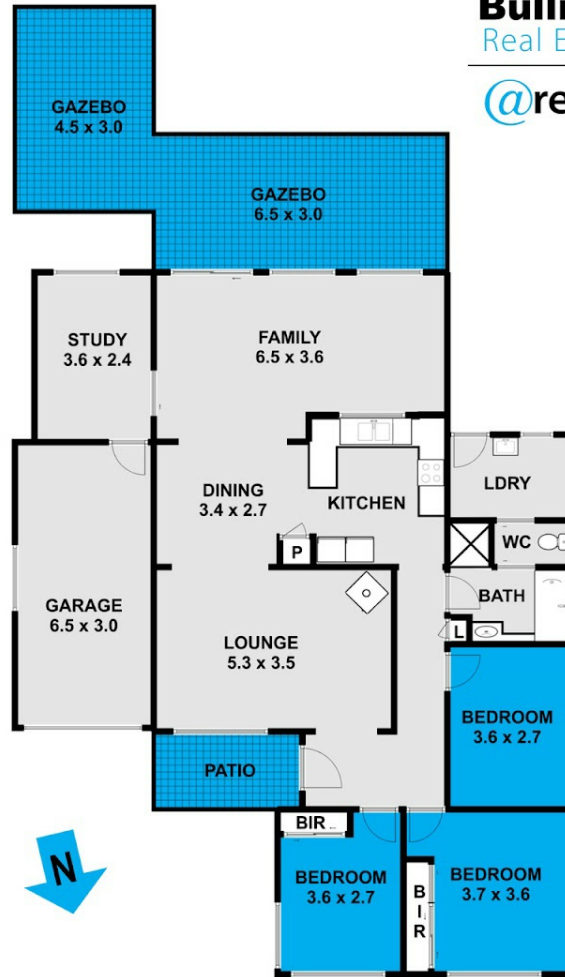
4 BED | 1 BATH | 1 CAR

PRICE:
Contact Agent

OPEN FOR INSPECTION:
N/A



Peter Bullman
0401394394
peterb@atrealty.com.au
www.atrealty.com.au



This floor plan including furniture, fixture measurements and dimensions are approximate and for illustrative purposes only.
@Realty gives no guarantee, warranty or representation as to the accuracy and layout.
All enquiries must be directed to the agent, vendor or party representing this floor plan.

33 Ritchie Crescent Horsley

Disclaimer: Please note this floor plan is for marketing purposes and is to be used as a guide only. All dimensions are estimates only and may not be exact measurements.