



FOR SALE

FOUR BED FAMILY HOME IN WHISPER QUIET LEAFY ESTATE, 423 SQM BLOCK!

Potential Rent - \$750 per week, Council - \$462 pq, Water rates - \$200 pq

Age - 19 years

This 4-bedroom family home on Lidell Street presents an exceptional opportunity for families seeking space, comfort and convenience in one of Oakhurst's most desirable pockets. Set on a generous 423.7 square metre block, thoughtfully designed living space, this property offers the perfect blend of indoor comfort and outdoor potential that growing families crave.

Step inside to discover four well-proportioned bedrooms that provide flexibility for family living, guest accommodation or a dedicated home office space. The single bathroom is complemented by practical layouts that maximise functionality throughout the home. With a double garage, you'll never worry about secure parking for the family vehicles while maintaining easy access to your front door.

The substantial land holding is where this property truly shines, offering endless possibilities for families who love to entertain or simply enjoy space to breathe. Whether you're dreaming of expansive gardens, children's play areas, or the perfect outdoor entertaining zone, this generous block provides the canvas for your vision to come to life.

Location couldn't be more convenient for modern family living. Oakhurst sits perfectly positioned just 46 kilometres west of Sydney's CBD, placing you within the thriving Greater Western Sydney region where opportunity and lifestyle converge. The suburb's rich history as a thoughtfully planned community means you'll enjoy wide streets, established neighbourhoods, and a genuine sense of community that's increasingly rare to find.

Education is a standout feature of this location, with the prestigious Richard Johnson Anglican School right on your doorstep, catering to students from Kindergarten through to Year 12. This eliminates the daily school run stress while ensuring your children receive quality education within walking distance of home.

- Plumpton Marketplace shopping centre nearby featuring Woolworths, BigW, Commonwealth

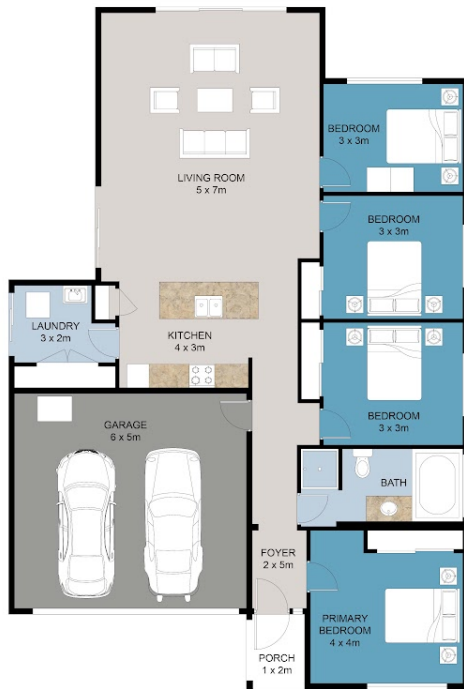
4 BED | 1 BATH | 2 CAR

PRICE:
\$1,125,000

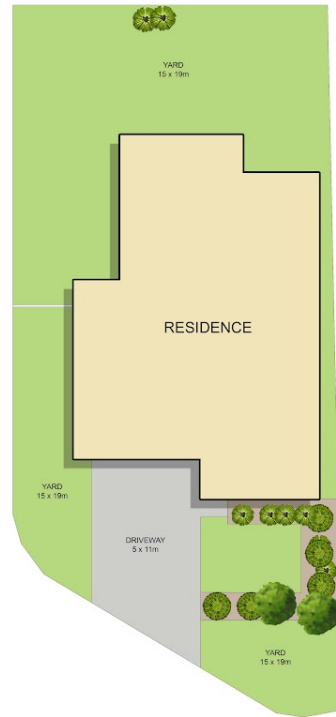
OPEN FOR INSPECTION:
N/A



Vivek Uppal
0426425839
vivekuppal@atrealty.com.au
www.atrealty.com.au



FLOOR PLAN



SITE PLAN

Disclaimer:

All measurements are approximate and for illustrative purposes only.
This floor plan is not to scale and may contain inaccuracies.
Buyers should verify details independently.

24 Lidell Street, Oakhurst, NSW 2761



Disclaimer: Please note this floor plan is for marketing purposes and is to be used as a guide only. All dimensions are estimates only and may not be exact measurements.