



FOR SALE

AMAZING FAMILY HOME "ON THE GOLF COURSE" 34 VANILLALILY PLACE, BANKSIA BEACH

Welcome to your new home in the prestigious Pacific Harbour Golf Course Estate.

This very beautiful residence, combining functionality with form and design could be yours! It was designed and built around a very private courtyard, making the home fresh with natural light and gentle breezes. Experience the easy-going living day to day with the indoor/outdoor living space perfect for entertaining family and friends with vistas of the golf course.

Outstanding Features

- * The covered patio bringing the outside inside with abundant natural light into the home with remote screens for all weather use.
- * Plantation shutters to the all windows, controlling the breezes and adjusting the light
- * The master suite with ensuite and a large walk-in robe – opening to the covered patio, very private - a quite space for reflection.
- * A separate lounge or media room with direct access to the courtyard
- * A chef's delight entertainers' kitchen, with spacious stone bench tops and ample drawer space and high-end appliances
- * The alfresco dining area and separate BBQ are with vistas over the golf course great for entertaining and play in the backyard.

The thoughtful planning of the layout of this beautiful home deserves to be experienced. The sense of privacy and exclusiveness of each space within the home blends perfectly with the open plan and the feeling of connectivity to each space, (including the court-yard) creates a unique atmosphere that becomes a calming, peaceful and serene retreat. With the house set on 800sqm, this home is large enough, without filling the block leaving room for the pool in the back yard!!!

A must inspect!!!

More features

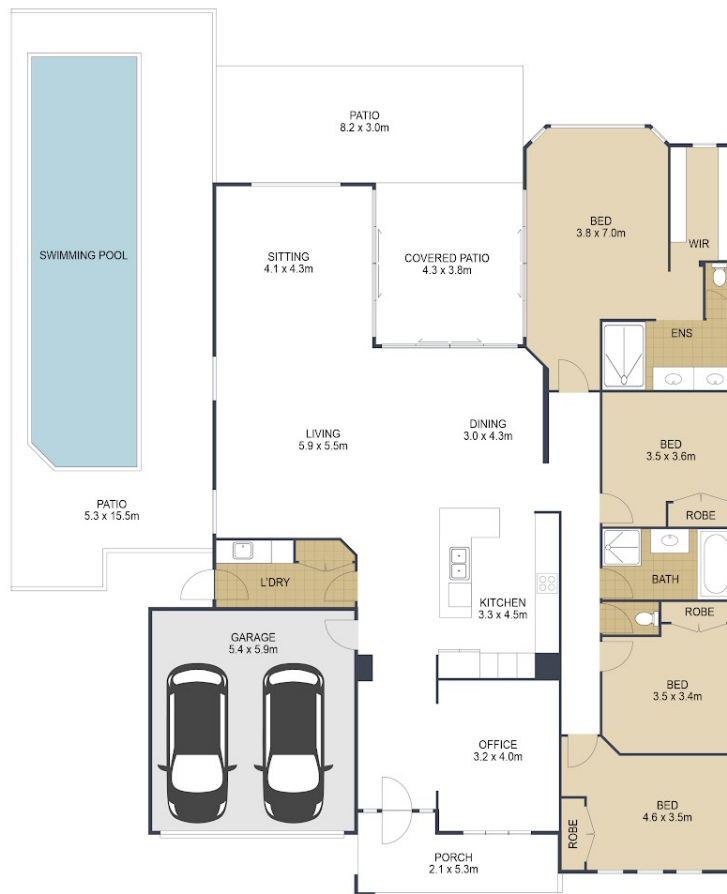
4 BED | 2 BATH | 2 CAR

PRICE:
For Sale - contact ELENA

OPEN FOR INSPECTION:
N/A



Elena Stevens
0415230521
elena@esre.com.au
www.esre.com.au



	4	
	2	
	2	
TOTAL:		259 m²

34 Vanillalilly Close **BANKSIA BEACH**

ARTIST'S IMPRESSION ONLY: While every attempt has been made to ensure the accuracy of this floor plan's areas and measurements of doors, windows, rooms and all other items are approximate and no responsibility is taken for any error, omission, or mis-statement. This plan is for illustrative purposes only and should only be used as such by any prospective purchaser. Floor plan by: www.open2view.com.au

Disclaimer: Please note this floor plan is for marketing purposes and is to be used as a guide only. All dimensions are estimates only and may not be exact measurements.