



FOR LEASE

SOPHISTICATED LIVING BY THE RIVER – BRAND NEW BOUTIQUE TOWNHOME IN WATERFORD

Nestled in the tranquil riverside suburb of Waterford, this newly completed double-storey townhome showcases the pinnacle of contemporary design and modern living. Featuring three spacious bedrooms, two well-appointed bathrooms, and a thoughtfully designed layout tailored for today's lifestyle, this residence is perfectly suited to families, couples, and professionals alike. Positioned within a multi-award-winning estate with quality homes, this sought-after address offers a rare balance of lifestyle, exclusivity, and convenience—ideal for those seeking a refined “lock-and-leave” lifestyle. The home is within an intimate complex of just 28 residences provides an exclusive community atmosphere.

Key Features:

- Townhome with three bedrooms, 2 bathrooms
- A study room ideal for those working from home
- Open plan living, dining and kitchen
- Kitchen and laundry room with premium Miele appliances
- Italian porcelain stone benchtop
- Ducted Reverse Cycle air-conditioning
- Garden terrace on ground level
- Balcony on upper floor
- Dedicated driveway access
- Private double garage
- Store room
- Dedicated Tesla EV charger
- Visitor parkings available
- Pet-friendly complex
- Connection to ultra-fast optical fibre network
- Smart intercom for controlled visitor access
- Only 28 residences in the complex

Location Highlights:

- Approx. 2-minute walk to the river and scenic walking/cycling trails
- Approx. 5-minute walk to Curtin University
- Approx. 13-minute drive to Perth CBD

3 BED | 2 BATH | 2 CAR

PRICE:

\$1,300 per week

OPEN FOR INSPECTION:

N/A

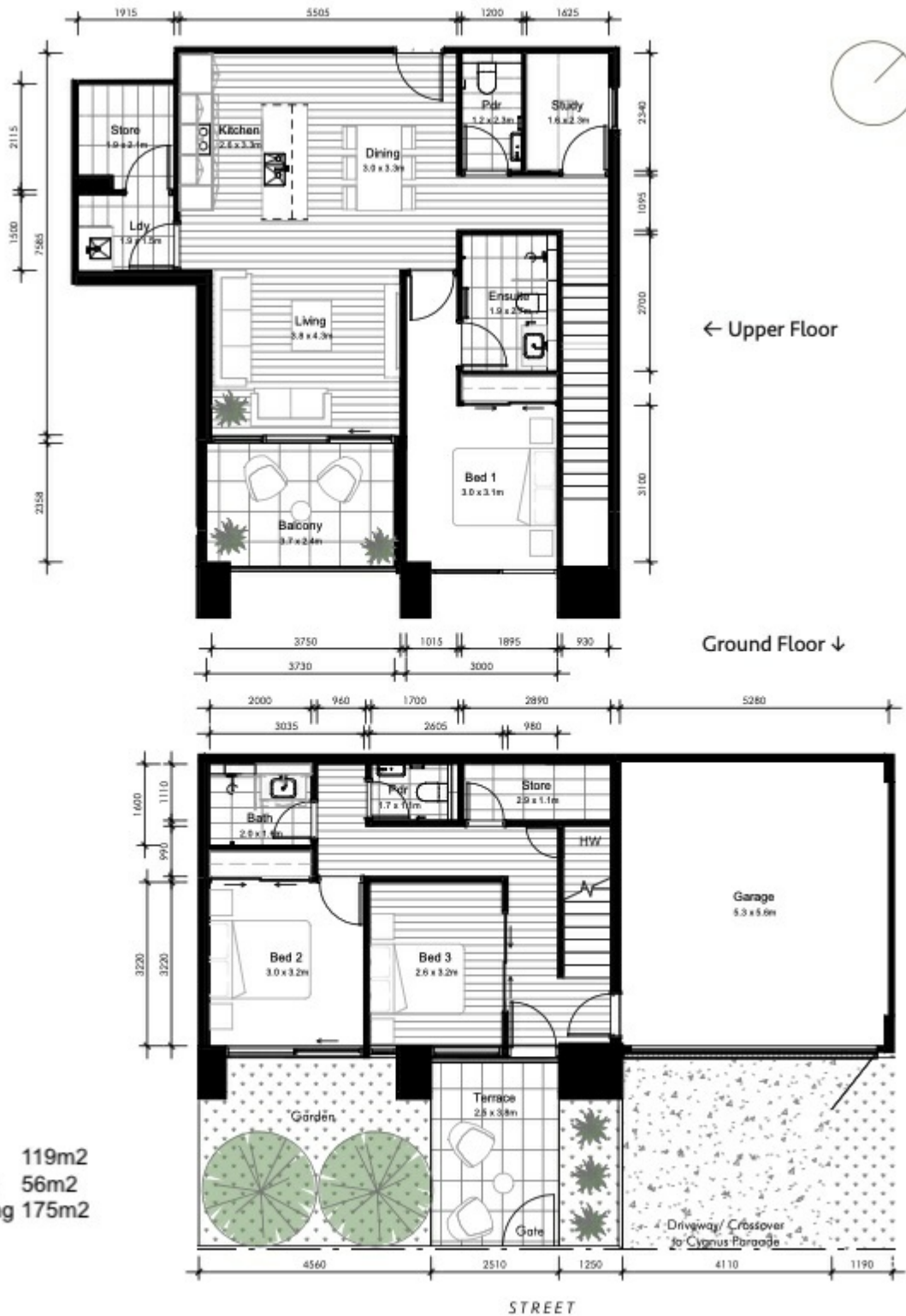


Seulyn Wong

0422025192

seulyn@atrealty.com.au

www.atrealty.com.au



Internal 119m2
 Bal & Tce 56m2
 Total Living 175m2

38 CYGNUS PDE
 WATERFORD WA

Disclaimer: Please note this floor plan is for marketing purposes and is to be used as a guide only. All dimensions are estimates only and may not be exact measurements.