



BOUNDARY LINES AND DIMENSIONS ARE APPROXIMATE AND MAY NOT BE ACCURATE. INDICATIVE ONLY.
PERSONS SHOULD RELY ON THEIR OWN ENQUIRIES.



FOR SALE

VERSATILE FAMILY HOME WITH POOL, LARGE GARAGE & WATER GLIMPSES!!!

Positioned in a sought-after lakeside pocket of Buff Point, 20 Narambi Road offers a spacious and flexible layout ideal for families, multi-generational living or those seeking extra space to grow. With renovated interiors, multiple living zones and impressive outdoor features, this home delivers both comfort and lifestyle.

Downstairs

- Two bedrooms providing great separation for extended family or guests
- Bathroom with bath tub
- Laundry with practical access
- Spacious family room complete with kitchenette – ideal for dual living or entertaining

Upstairs

- Two additional bedrooms, including master with built-in wardrobe
- Renovated kitchen with modern finishes
- Renovated bathroom
- Light-filled living and dining flowing to both front and rear balconies
- Water glimpses from the upper level
- Ceiling fans throughout the home for added comfort

Outdoor Features

- In-ground swimming pool perfect for summer
- Cabana creating a great entertaining space
- Huge 5.9m x 8.7m garage ideal for vehicles, storage or workshop use
- Drive-through access on both sides of the property – perfect for boats, trailers or caravans
- 40 solar panels offering excellent energy efficiency

Location Highlights

- Walking distance to the lake
- Short drive to local schools, shops and medical facilities
- Easy access to the M1 Motorway for commuters

A fantastic opportunity to secure a well-equipped home in a great location with space, flexibility and lifestyle appeal.

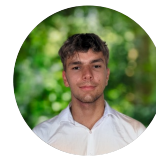
4 BED | 2 BATH | 2 CAR

PRICE:

Just Listed

OPEN FOR INSPECTION:

N/A

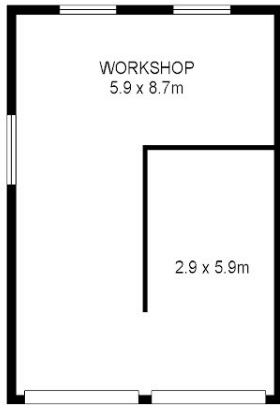


Thomas Twyford

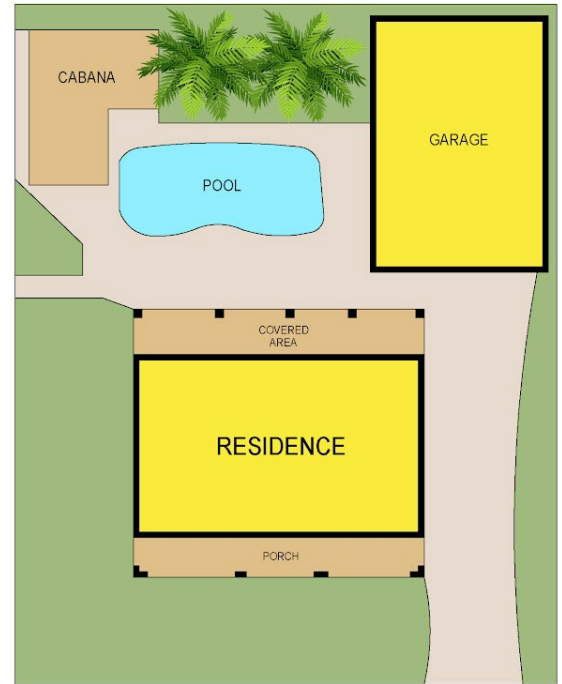
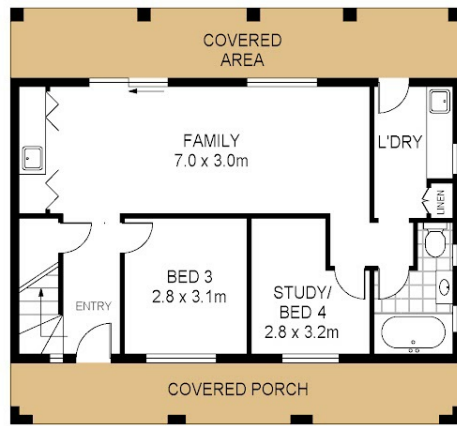
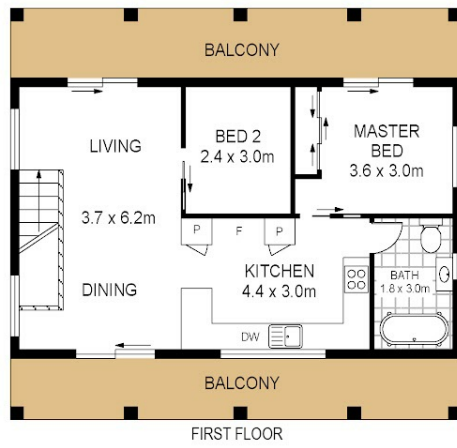
0414002753

tomtwyford@atrealty.com.au

www.atrealty.com.au



GARAGE



20 Narambi Road
Buff Point



Total Internal Floor Area: 124 sqm

Scale in metres Indicative only. Dimensions are approximate. All information contained herein is gathered from sources we believe to be reliable. However we cannot guarantee its accuracy and interested persons should rely on their own enquiries



Disclaimer: Please note this floor plan is for marketing purposes and is to be used as a guide only. All dimensions are estimates only and may not be exact measurements.