



FOR SALE

SOME STREETS JUST HOLD THEIR OWN — AND THIS ONE PROVES IT.

Tucked into one of Wonthaggi's most tightly held court locations, this craftsman-built residence has been quietly enjoyed by its owners for over a decade. Now it's your turn. With five genuine bedrooms, multiple living zones, and a covered alfresco made for long Sunday afternoons, this is a home that adapts to every season of life - whether you're raising a family, hosting the grandkids, or simply ready to spread out and breathe.

The oversized master suite is a true retreat, complete with walk-in robe and ensuite, while four additional bedrooms, and a dedicated media room - mean everyone has their own corner of the world.

Soaring high ceilings run throughout, giving every room a sense of light and scale that you feel the moment you walk in. The heart of the home is a generous open living and dining zone anchored by a modern kitchen with stone bench tops, butler's pantry, and quality appliances - keeping the mess where it belongs and the entertaining where it shines.

Step outside and the lifestyle only improves. A substantial covered alfresco sets the scene for year-round entertaining, while established gardens, raised veggie beds, and a working chicken coop bring a sense of self-sufficiency that's genuinely rare this close to town.

The oversized double garage handles the vehicles with room to spare, and the CBD is an easy stroll away - everything you need, none of the compromise.

This is the kind of home families outgrow only when they're ready to downsize - and the kind down-sizers discover they never want to leave.

Disclaimer: While every effort has been made to ensure the accuracy of these particulars, no warranty is given by the vendor or the agent as to their accuracy. Interested parties should not rely on these particulars as representations of fact but must satisfy themselves by inspection or otherwise. Although high standards have been used in preparing this document, no legal responsibility can be accepted for any loss or damage resulting from the content or use of this information. Any photographs show only certain parts of the property as they appeared when taken. Areas, amounts, measurements, distances, and all other numerical information are

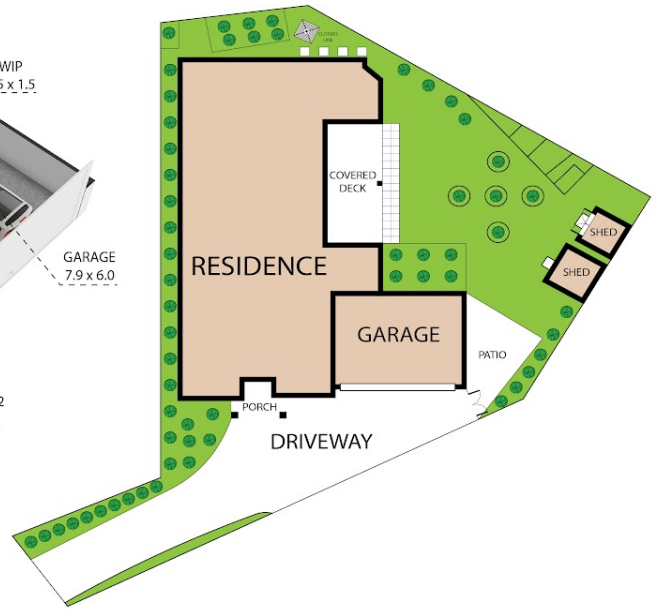
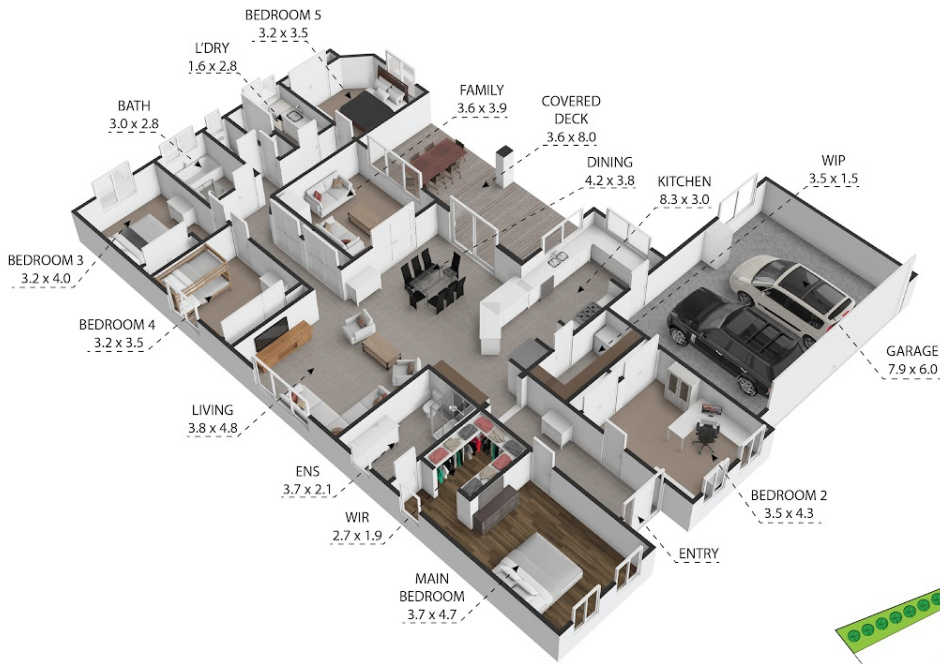
5 BED | 2 BATH | 2 CAR

PRICE:
\$795,000 - \$845,000

OPEN FOR INSPECTION:
N/A



Leo Edwards
0472523445
leo@atrealty.com.au
www.atrealty.com.au



5 Kalamana Court, Wonthaggi, VIC, 3995
TOTAL APPROX. FLOOR AREA 268 SQ.M

Whilst every attempt has been made to ensure the accuracy of the floor plan contained here, measurements of doors, windows, rooms and any other items are approximate and no responsibility is taken for any error, omission, or misstatement. This plan is for illustrative purposes only and should be used as such by any prospective purchaser.



Disclaimer: Please note this floor plan is for marketing purposes and is to be used as a guide only. All dimensions are estimates only and may not be exact measurements.

Leo Edwards
0472523445
leo@atrealty.com.au
www.atrealty.com.au

