



FOR SALE

CLASSIC QUEENSLANDER CHARM, HUGE POTENTIAL ON A 1,019M2 BLOCK !

" Expressions Of Interest By C.O.B 28/04/2026 "

This charming 3 bedroom lowset Queenslander offers the perfect blend of comfort and potential in the heart of Gordonvale.

Set on a generous 1,019m2 block with TWO STREET ACCESS, this property presents an ideal opportunity for families, first home buyers, or investors seeking a solid foundation in this thriving suburb just 25 minutes' drive South of Cairns CBD.

Step inside to discover a thoughtfully designed open plan layout featuring 3 well appointed bedrooms, office or kids bedroom and one bathroom. The home boasts a timber kitchen with corner pantry and island bench, timber floors and split air conditioning living, ensuring year round comfort in the tropical Queensland climate.

- Front Porch To Enjoy The Morning Sun
- Enclosed Rear Patio
- Single Garage + Electric Roller Door
- Internal Laundry
- 6m x 8m Shed

The property's outdoor credentials are truly impressive and presents many options with a Low Medium Density Residential Zoning.

- Dual Occupancy (Two Homes On 1 Block)
- Subdivide The Land, Selling Off The Rear Block
- Remove Existing Home / Add Multiple Dwellings Like Town Houses or Low Rise Apartments (All Subject To Council Approval)

The location offers convenience to shopping, sporting facilities, cafes and schooling with several quality schools nearby.

For More Information

3 BED | 1 BATH | 2 CAR

PRICE:

Expressions Of Interest C.O.B
28/04/2026

OPEN FOR INSPECTION:

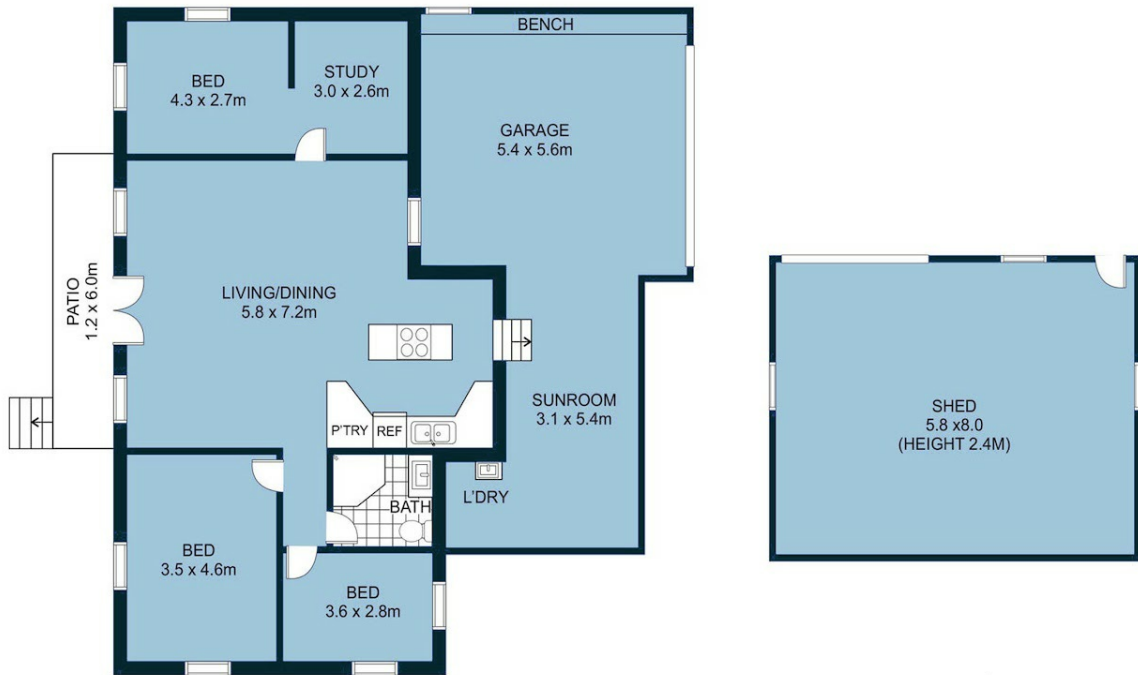
Apr 18 at 10:30am - 11:30am



Brian Bolton
0402440098

brianbolton@atrealty.com.au

www.atrealty.com.au



Brian Bolton | **@realty**
Real Estate

Disclaimer: Please note this floor plan is for marketing purposes and is to be used as a guide only. All dimensions are estimates only and may not be exact measurements.