

FOR SALE

MODERN LIVING IN A PRIME MORWELL LOCATION WITH STAMP DUTY SAVINGS!!

Positioned in a quiet, family-friendly pocket of Morwell, 6 Lamplight Way presents an outstanding opportunity to secure a fully upgraded home in a highly convenient and fast-growing location. Set within the popular Panoramic Estate, this property offers the perfect blend of modern comfort, lifestyle, and accessibility.

The home has been thoughtfully upgraded throughout, delivering a fresh, contemporary feel with quality finishes and a functional layout ideal for families, first home buyers, or savvy investors. With nothing left to do, you can simply move in and enjoy.

Location Highlights:

Convenience is key, and this property delivers on all fronts:

Schools: Close to well-regarded local schools including Morwell Central Primary School, Morwell Park Primary School, Sacred Heart Primary, and Kurnai College, all just a short drive away

Shopping: Only minutes to Mid Valley Shopping Centre, offering major retailers, supermarkets, cafés, and entertainment options

Transport: Approx. 10-minute walk to Morwell Train Station with regular V/Line services, providing easy access to Melbourne and surrounding areas

Why You'll Love It:

Located in a peaceful, modern estate with strong community appeal

Easy access to the Princes Freeway for commuters

Surrounded by quality homes in a growing area with excellent future potential

Close to parks, recreational facilities, and everyday amenities

This is a fantastic opportunity to secure a beautifully upgraded home in a location that truly ticks all the boxes. Whether you're looking to live in or invest, 6 Lamplight Way offers lifestyle, convenience, and long-term value

Disclaimer: While every effort has been made to ensure the accuracy of these particulars, no warranty is given by the vendor or the agent as to their accuracy. Interested parties should not

4 BED | 2 BATH | 2 CAR

PRICE:

\$630,000 - \$660,000

OPEN FOR INSPECTION:

N/A

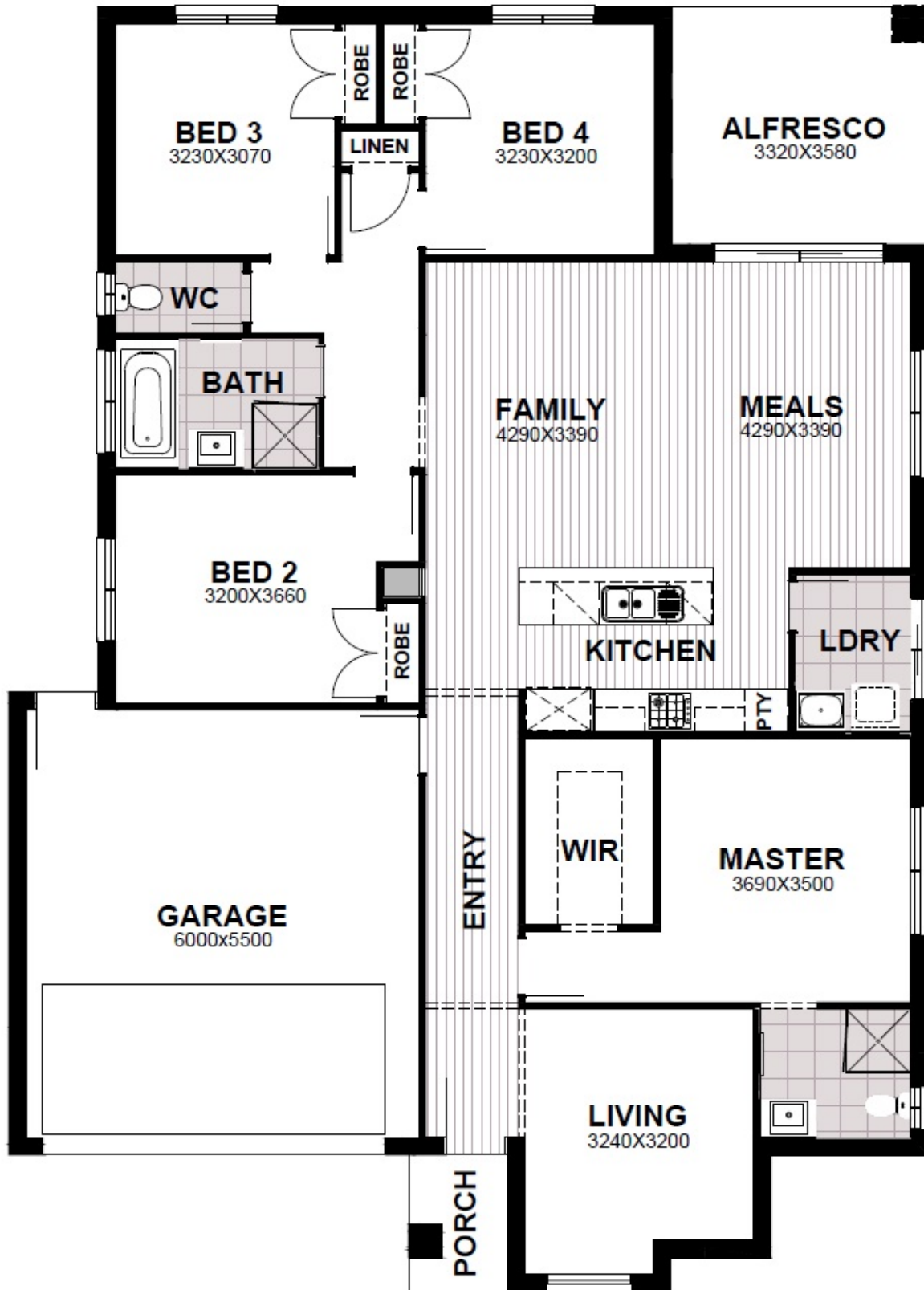


Harmanpreet Singh

0430000018

harmans@atrealty.com.au

www.atrealty.com.au



Disclaimer: Please note this floor plan is for marketing purposes and is to be used as a guide only. All dimensions are estimates only and may not be exact measurements.