



FOR SALE

EXCLUSIVELY DESIGNED AND UTTERLY FAULTLESS !

Nestled in the heart of Goldsborough's picturesque valley with stunning mountain views, this exceptionally crafted masterpiece by Award Winning Designers GJ Gardner Homes, offers the perfect blend of modern comfort and natural serenity. Set on a generous 4,001 square metre block, this property presents an incredible opportunity for families seeking space, privacy, and lifestyle in one of Cairns Region's most tranquil localities.

Step inside to discover the sheer size of this home and the details that bring together luxury function and timeless design in one unforgettable space.

- Dekton Porcelain Benchtops / Granite Feature To Statement Kitchen.
- Neff Ovens & Bora Vented Cooktop.
- Integrated Liebherr Fridge & Miele Dishwasher.
- Artusi Gas BBQ To Outdoor Kitchen.
- Polished Concrete Flooring.
- Butler's Pantry with Siemens Combi Oven, Liebherr Freezer & Miele Dishwasher.

There are 4 spacious bedrooms with the master bedroom complemented by a luxurious ensuite and expansive walk in robe for ultimate convenience. The thoughtful design extends to a dedicated study area perfect for working from home, while the media room and games room provides additional living space for family entertainment or relaxation.

Modern amenities enhance everyday living with split system air conditioning ensuring year round comfort, while energy efficient solar panels help reduce electricity costs.

- 10kw Solar System
- 13kw Tesla Battery
- EV Charger

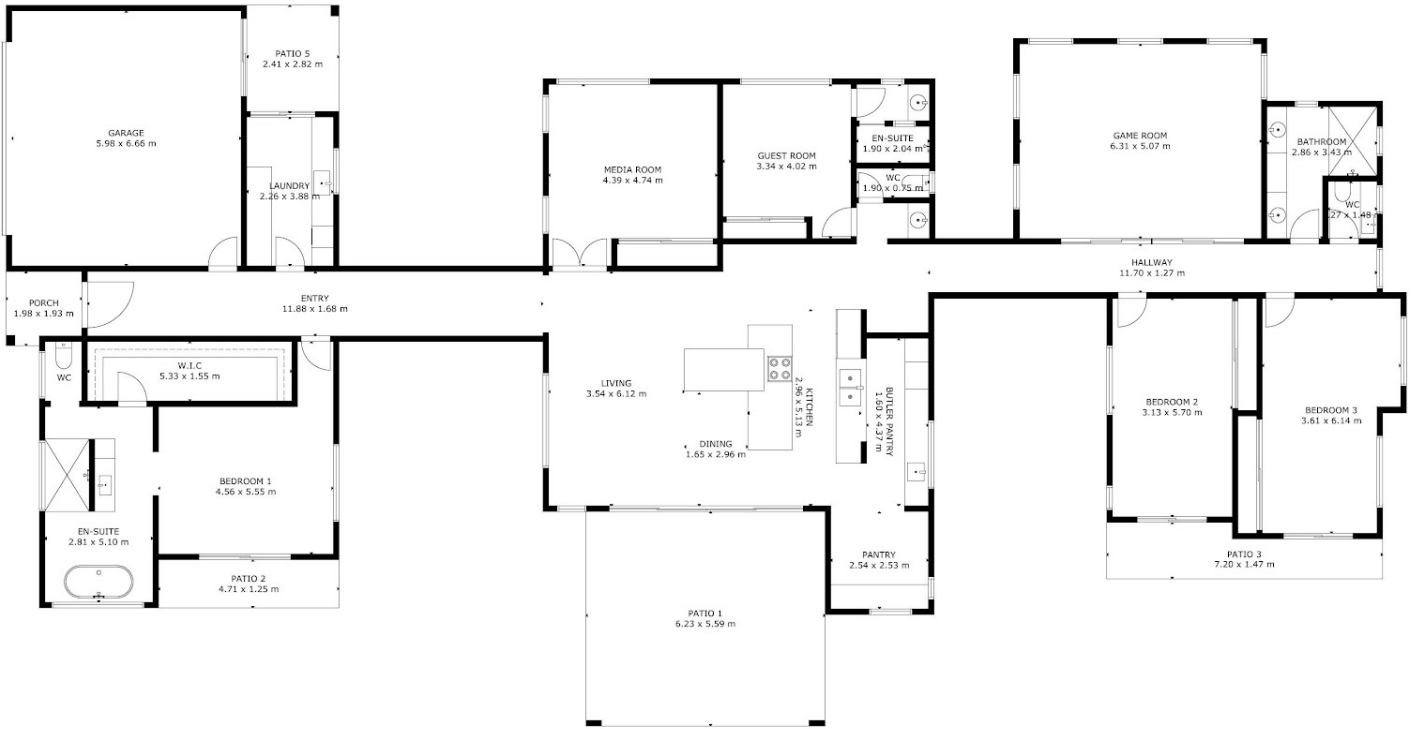
4 BED | 3 BATH | 6 CAR

PRICE:
Offers Over \$1.8m

OPEN FOR INSPECTION:
N/A



Brian Bolton
0402440098
brianbolton@atrealty.com.au
www.atrealty.com.au



GROSS INTERNAL AREA
 TOTAL: 294 m²
 FLOOR 1: 294 m²
 EXCLUDED AREAS: GARAGE: 40 m², PORCH: 4 m², PATIO: 56 m²
 SIZE AND DIMENSIONS ARE APPROXIMATE, ACTUAL MAY VARY

FLOOR 1

Disclaimer: Please note this floor plan is for marketing purposes and is to be used as a guide only. All dimensions are estimates only and may not be exact measurements.