



FOR SALE

FAMILY STARTER WITH ROOM TO GROW

Affordable 3-bedroom high set family home with loads of options. Timber floors in the lounge, dining and main bedroom. Front and back patios upstairs and second living downstairs including kitchenette, toilet, shower, laundry, rumpus or 4th bedroom and plenty of room for storage. Work from home by turning downstairs into an office/studio or utilise as a teenagers retreat / flat. Out front boasts an in-ground saltwater pool, BBQ/entertaining area and double carport with enough height for van, boat or four-wheel drive. The fully fenced back yard is complemented with beautiful shade trees, powered work shed and chicken coop. Ideal location only minutes to Calvary Christian College, sporting fields, Mount Louisa shops, Domain Central shopping outlets, City Centre, The strand and Airport. What more could you want!

Upstairs features

- 3 bedrooms all with air conditioning & fans
- Bathroom with tub
- Timber & carpet floors
- Air conditioning throughout
- Kitchen has space for a dishwasher
- Verandahs front & back

Ground level features

- Fully lockable under house
- Second bathroom / toilet
- Kitchenette
- Air conditioned Rumpus & storeroom
- Entertainment BBQ area
- Beautiful swimming pool with lounge area
- 6x3m powered garden shed & chicken coop
- 607sqm allotment

For an inspection, please contact Grant from Davison @realty on 0413 984 703

3 BED | 2 BATH | 2 CAR

PRICE:

Offers Over \$598,000

OPEN FOR INSPECTION:

N/A

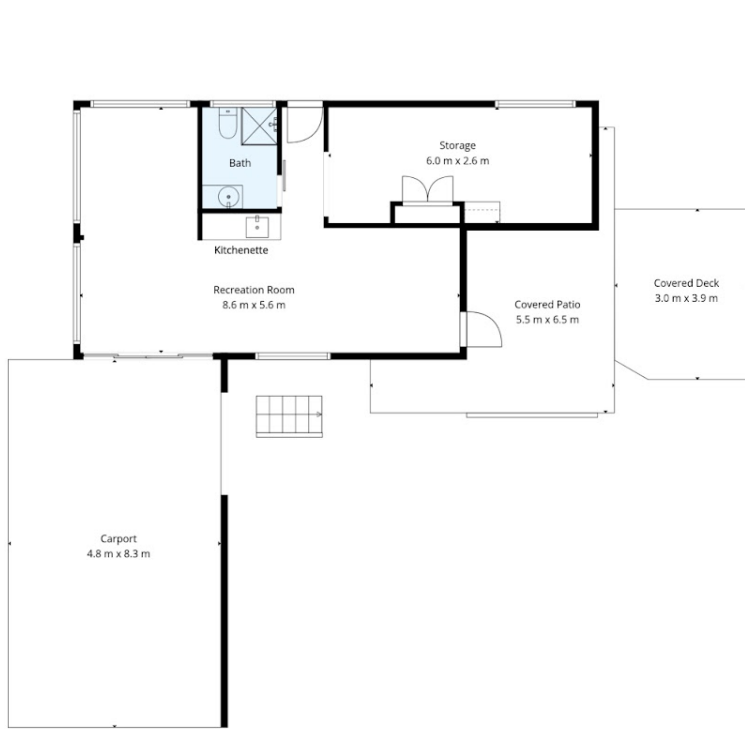


Grant Davison

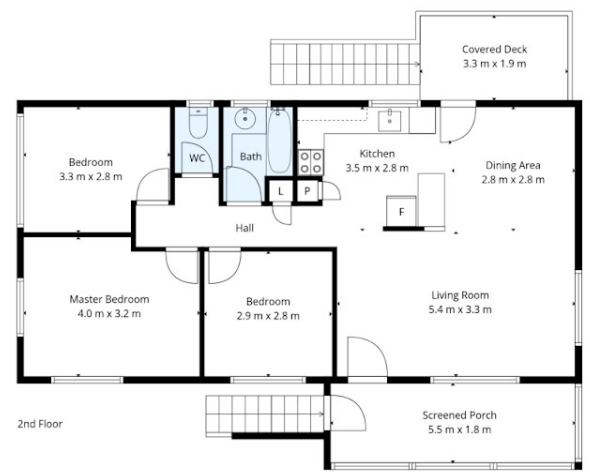
0413984703

gdavison@atrealty.com.au

davisonatrealty.com.au



1st Floor



2nd Floor

TOTAL: 117 m²
 1st floor: 41 m², 2nd floor: 76 m²
 EXCLUDED AREAS: CARPORT: 40 m², STORAGE: 15 m², COVERED DECK: 18 m²,
 COVERED PATIO: 17 m², SCREENED PORCH: 10 m², WALLS: 12 m²

Floor Plan Created By Cubicasa App. Measurements Deemed Highly Reliable But Not Guaranteed.

Disclaimer: Please note this floor plan is for marketing purposes and is to be used as a guide only. All dimensions are estimates only and may not be exact measurements.