



FOR LEASE

BOUTIQUE OFFICE SPACE WITH PARKING IN VIBRANT NORTH FREMANTLE HUB

Rob Harwood @realty is excited to present 11B Jewell Parade, North Fremantle for lease.

Previously utilised as an office, this versatile property offers a range of potential uses (subject to permitted uses under City of Fremantle Local Planning Scheme No. 4), making it an excellent opportunity for a variety of businesses.

Ideally positioned in the heart of iconic North Fremantle, the property is located just behind Queen Victoria Street and adjacent to Old Bridge Cellars. Enjoy the convenience of being within easy walking distance to public transport, including train and bus services, as well as an array of popular cafés, restaurants, and local hotspots such as Mrs Brown Bar, Mojos Bar, and Piggy Food Co.

You'll also benefit from being just a short 5-minute walk to Port Beach and only a 5-minute drive to the Fremantle CBD. The location provides excellent connectivity, with under 10 minutes to Cottesloe and the western suburbs, and easy access south via Stirling Highway and Leach Highway.

Property Features:

- Separate meeting room
- Functional kitchenette
- Laundry facilities
- Bathroom with toilet and shower
- Three Daikin split system air conditioners
- Two designated parking bays
- Potential for up to six additional bays (subject to negotiation)

With strong exposure from the high level of passing traffic to Old Bridge Cellars, this property is particularly well suited to professional uses such as an architectural practice or real estate office.

Disclaimer: While every effort has been made to ensure the accuracy of these particulars, no warranty is given by the vendor or the agent as to their accuracy. Interested parties should not

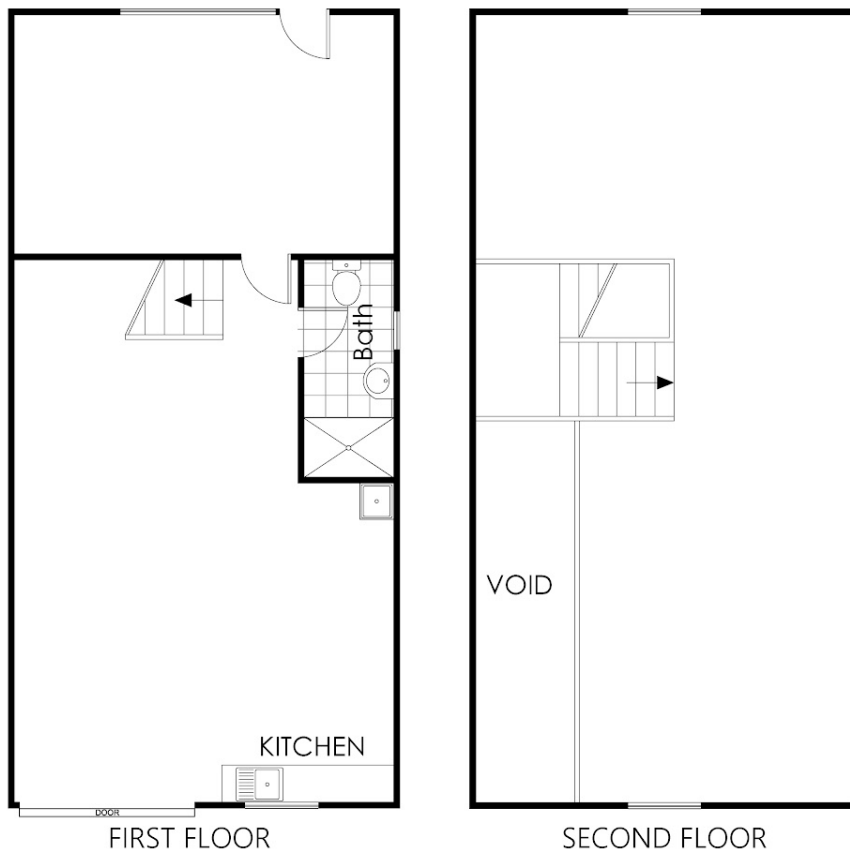
1 BED | 1 BATH | 0 CAR

PRICE:
\$55,000 plus plus

OPEN FOR INSPECTION:
N/A



Rob Harwood
0411649625
robharwood@atrealty.com.au
www.robharwoodatrealty.com.au



11B Jewell Parade, North Fremantle

This floor plan is not to scale.
 Dimensions are approximate and therefore should only be used for illustrative purposes.

	150 m ²
	0 Bed
	1 Bath
	0 Car

Disclaimer: Please note this floor plan is for marketing purposes and is to be used as a guide only. All dimensions are estimates only and may not be exact measurements.