



## FOR SALE

### CHARACTER AND CHARM WITH LARGE SHED

This charming four-bedroom family home at 7 Highlands Crescent combines the character of yesterday with today's comfort and convenience in one of Western Sydney's most vibrant and multicultural communities. Nestled on a generous 765 square metre block, this well-appointed residence features modern amenities and thoughtful design elements that make it ideal for growing families seeking space, style and accessibility. The home is located in a quiet cul-de-sac perfect for a younger family or those after a peaceful location.

The home showcases high ceilings and beautiful timber flooring throughout creating a warm and welcoming atmosphere that flows seamlessly from room to room. Three good sized bedrooms provide generous accommodation for a growing family with a fourth bedroom/study available depending on the family requirements.

The recently renovated kitchen features 40mm stone benchtops and provides a hub for the open plan living areas. The lounge/dining overlooks the generous backyard and back verandah where either can be enjoyed depending on the weather and the time of year.

The main bathroom has been fully renovated and there is a second full bathroom in the laundry catering for a busy household.

Tradespeople will love the 10.7 x 7.6 metre shed at the end of the driveway. With parking for up to 4 cars as well as at least two in the carport there is plenty of space for multiple parking and storage.

The comfort of year-round weather control is ensured with reverse cycle air conditioning, making every season enjoyable for the whole family.

The substantial land area provides endless possibilities for families to create their own private oasis, whether that's establishing a vegetable garden, creating play areas for children, or designing entertaining spaces for friends and family gatherings.

- Three/four generous bedrooms
- High ceilings and beautiful timber flooring throughout
- Air conditioning for year-round comfort
- Secure parking for multiple vehicles

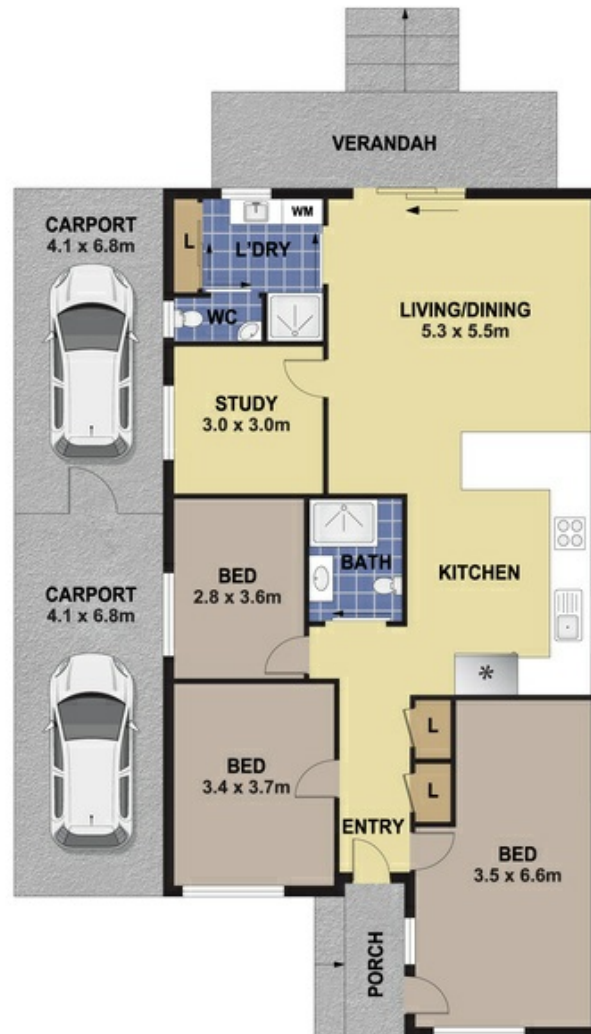
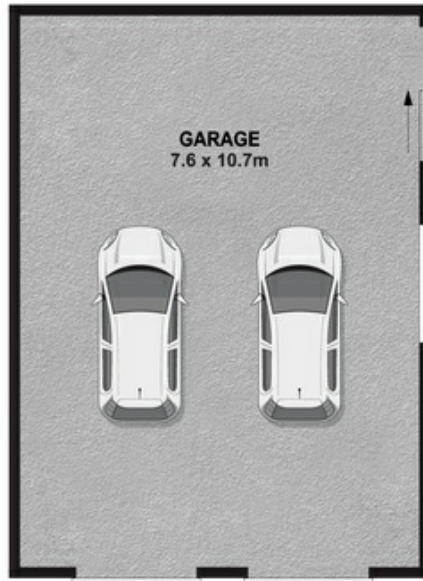
4 BED | 2 BATH | 4 CAR

**PRICE:**  
\$1,350,000

**OPEN FOR INSPECTION:**  
May 23 at 1:30pm - 2:00pm



**Judy Pope**  
**0490045875**  
judy.pope@atrealty.com.au  
[www.atrealty.com.au](http://www.atrealty.com.au)



Disclaimer: Please note this floor plan is for marketing purposes and is to be used as a guide only. All dimensions are estimates only and may not be exact measurements.

**DISCLAIMER**

PLANS SHOWN ARE FOR MARKETING PURPOSES ONLY, ALL DIMENSIONS ARE APPROXIMATE AND NOT TO SCALE. THEY ARE SUBJECT TO ERRORS AND INACCURACIES AND NO LIABILITY WILL BE ACCEPTED BY THE REALTOR. INTERESTED PARTIES SHOULD MAKE THEIR OWN ENQUIRIES.

Judy Pope  
0490045875  
judy.pope@atrealty.com.au

[www.atrealty.com.au](http://www.atrealty.com.au)

