

FOR SALE

PRIVATE, SPACIOUS & SURROUNDED BY NATURE

Tucked away in a peaceful, private setting, this spacious four-bedroom home offers the perfect balance of comfort, functionality, and natural surroundings.

Positioned on a generous 771sqm freehold section, the home enjoys a tranquil bush outlook and a real sense of privacy, while still being conveniently close to schools and transport links. Inside, the layout is designed for modern living, featuring two separate living areas and an open-plan kitchen and dining space that flows effortlessly for everyday living and entertaining.

The recently updated kitchen is well-appointed with quality finishes, including granite benchtops, a breakfast bar, and excellent storage — making it the true heart of the home. Four bedrooms provide flexibility for families, guests, or working from home, supported by two bathrooms plus a separate toilet for added convenience.

Comfort is assured year-round with four heat pumps, insulation, and partial double glazing, while practical features such as a single garage, off-street parking, and backyard access add to the home's appeal.

Outdoors, the landscaped grounds offer space to relax, entertain, or simply enjoy the peaceful surroundings. Whether you're upsizing, relocating, or looking for a home with room to grow, this property presents a fantastic opportunity in a sought-after Normandale location.

For sale by tender closing Thursday 21 May at 2pm (unless sold prior).

4 BED | 2 BATH | 1 CAR

PRICE:

By tender. Tender Closing Date
21/05/2026

OPEN FOR INSPECTION:

May 9 at 2:30pm - 3:00pm

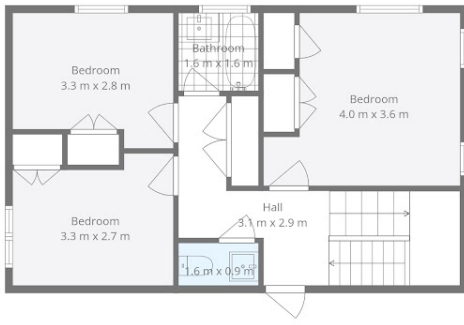


Mike Lovell

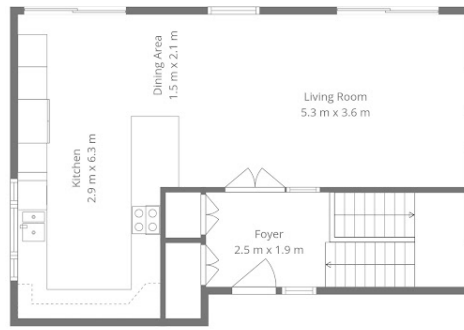
0274356007

mike@luxerealty.co.nz

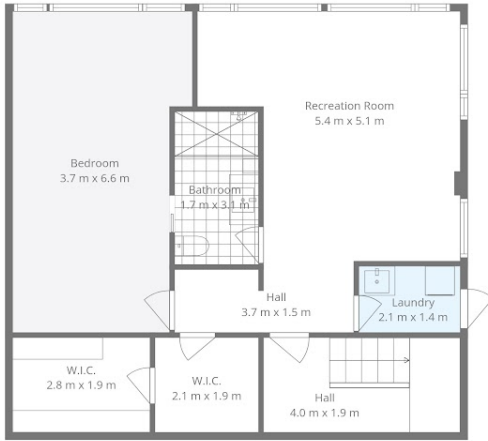
www.luxerealty.co.nz



2nd Floor



3rd Floor



1st Floor



Floor Plans Are Deemed Highly Reliable But Not Guaranteed. Illustrative Purposes Only.



Disclaimer: Please note this floor plan is for marketing purposes and is to be used as a guide only. All dimensions are estimates only and may not be exact measurements.