



FOR SALE

DISPLAY HOME STYLE, SPACE & LIGHT

**** This Property Will Go To Auction at 2.30pm on 23 May Unless Sold Prior ****

This is the kind of home that makes a great first impression... and then quietly keeps impressing you.

Originally a Classic Constructions display home, it was built to show off a little, and it still does. You'll notice the sense of space and light from the moment you arrive, and then you reach that central living space with its cathedral ceiling where you notice how different it feels to everything else you've seen. The wall of panel doors opens the whole space out to the alfresco so entertaining is seamless, but it's just as good on a quiet Sunday with the sunlight breaking quietly through the trees. Upstairs, the parents get their own truly king-sized retreat with a walk-through robe, a generous ensuite and Brindabella views that you'll never tire of. There's also solar passive design, excellent storage and over 230sqm of living, so it's not just good-looking, it actually works.

And then there's the location. You've got protected grasslands as your front yard, which gives the whole place a sense of space you don't expect in suburbia. It feels a bit removed, a bit calmer, like you've somehow skipped the usual close-quarters living. You've still got Fraser Primary, shops and transport within easy reach, plus off-street access and extra parking when you need it. It's that nice balance of feeling away from it all, while still being completely connected.

Summary of Features:

- Ex-Display Home
- Freshly Painted Throughout
- New Carpets & Curtains
- Two-Separate Living Areas
- Formal Lounge off Large Entry Foyer
- Cathedral Ceilings to Family/Meals/Kitchen
- Large Kitchen w/ Island Bench, DishDrawer, Walk-In Pantry
- Heated Floors Downstairs (& Upstairs Bathroom)
- Split-System AC Upstairs
- King-Sized Main Bedroom, Walk-Thru Robe, Ensuite
- Built-In Robes to Downstairs Bedrooms

4 BED | 2 BATH | 2 CAR

PRICE:

Buyers Guide: \$1,025,000+

OPEN FOR INSPECTION:

May 23 at 2:00pm - 2:30pm

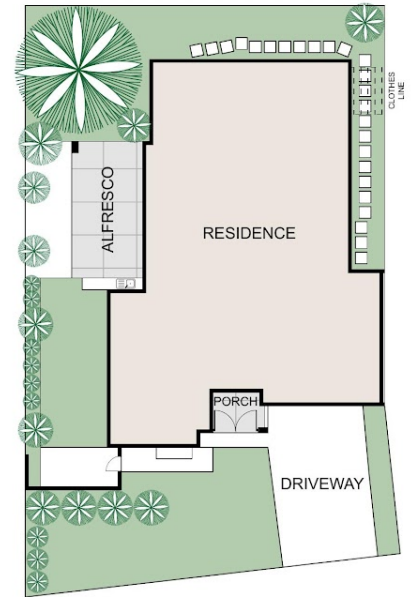
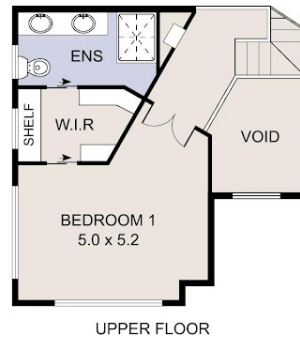


Catherine Halloran

0490045819

catherine@thepropertyagents.com.au

www.thepropertyagents.com.au



Disclaimer: Please note this floor plan is for marketing purposes and is to be used as a guide only. All dimensions are estimates only and may not be exact measurements.