



SOLD

SPLASH INTO THE NEW YEAR!

Local Agents Paivi and Leanne are proud to market this low maintenance, modern and stylish home.

Quality built to 6 star energy efficiency rating to keep you cool this Summer, and the perfect plunge pool to help you wind down after a hard days work. Simply move in and enjoy!

Featuring on trend polished concrete floors throughout the open plan living areas and hallways and a galley style kitchen that is finished in warm neutral tones and a great pop of colour on the floor with the Pirelli Premium Rubber flooring through to the laundry for ultimate comfort underfoot. Ample storage provided in the kitchen with the added bonus of easy access to the laundry, and the outdoor alfresco and pool area. You will also find a 2nd lounge that can easily convert to a media room, pre-wired for surround sound.

Set back from the street in a private and tropical sub-division, in close proximity to all the great amenities on offer in Loganholme. Walk to IGA and cafes, shops, schools, kindergartens, soccer fields and Alexander Clark park. Not to mention the easy access to the Ipswich Motorway and M1 to the Gold Coast and the CBD.

Property Features:

- Tinted windows
- Insulation
- ceiling fans throughout, airconditioning to the family room
- Salt water plunge pool with timber decked bali hut
- 9.8m x 2.5m undercover alfresco area complete with timber soffit and beautiful sandstone tiling.
- 4 bedrooms with built in robes, master with ensuite
- Remote garage with wall to wall storage
- Kitchen with convection microwave oven, electric cooktop and pull out range hood
- separate laundry
- Plenty of storage throughout
- Security system and Vacumaid ducted Vacuum system installed
- Fully landscaped yard

This home has been quality built and is a MUST to inspect!

4 BED | 2 BATH | 0 CAR

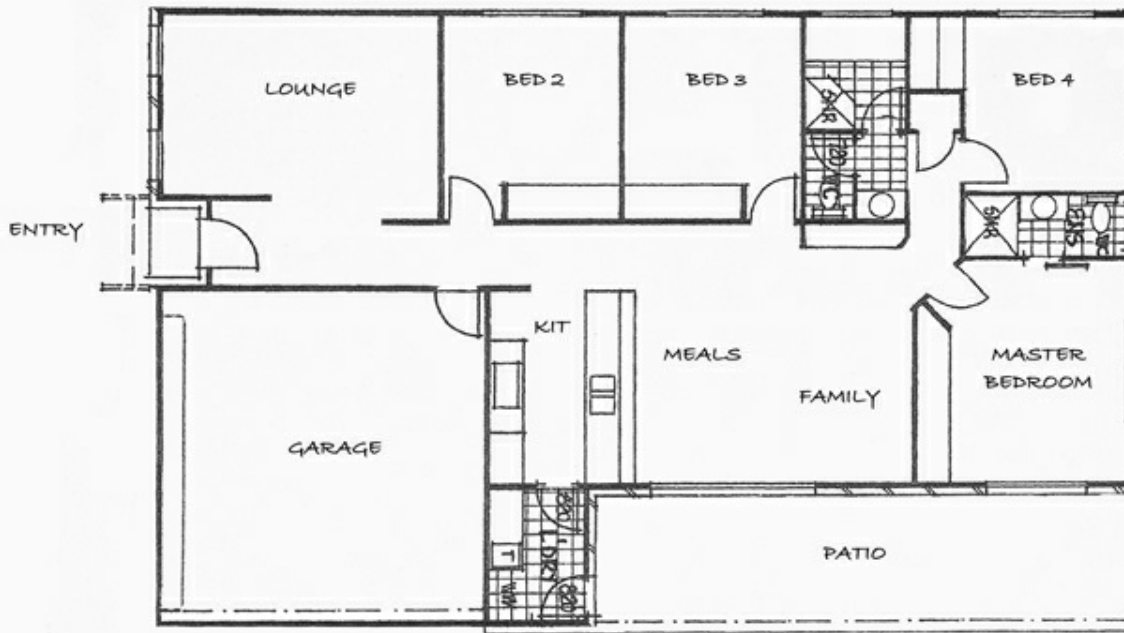
PRICE:
\$475,000

OPEN FOR INSPECTION:
N/A



Paivi Dickie
0412909541
paivi@atrealty.com.au
www.atrealty.com.au

211A DREWS RD LOGANHOLME



NOTE - This plan is an illustration and is to be used as a guide to layout only

Disclaimer: Please note this floor plan is for marketing purposes and is to be used as a guide only. All dimensions are estimates only and may not be exact measurements.