



SOLD

AN EASY FIRST STEP INTO HOME OWNERSHIP

If you're looking for a home that won't immediately demand time or money, this makes a lot of sense. It's been updated where it counts, so you can settle in without needing to take on projects straight away. A great fit for first home buyers, with the added benefit of being an easy investment option.

Parking is straightforward with drive-in access to the carport, plus extra off-street parking when friends drop by. Inside, the colour palette is neutral and easy to work with, while painted panel detailing adds a bit of interest through the central hallway.

The updated kitchen sits to one side of the home, with a breakfast bar that works well for everyday meals. From here, it connects through to the laundry and third bedroom, giving you flexibility for a flatmate, guests or a home office.

Across the hall, the living room flows into a conservatory, creating a space that can shift with your needs - room for a proper lounge setup, a dining table, or both. Natural light filters through nicely, making it somewhere you'll want to spend time.

The primary bedroom is a good size and includes a built-in wardrobe, while the bathroom has been modernised and keeps things simple with a shower, vanity, and toilet.

Out the back, the section is private and easy to manage. There's even a separate outdoor toilet - surprisingly handy when you're entertaining or spending time outside - along with a garden shed for tools and storage.

Everything here is well-kept and ready to go, making it a smart, low-stress option.

Collectively marketed by Team Robinson - four people working for you

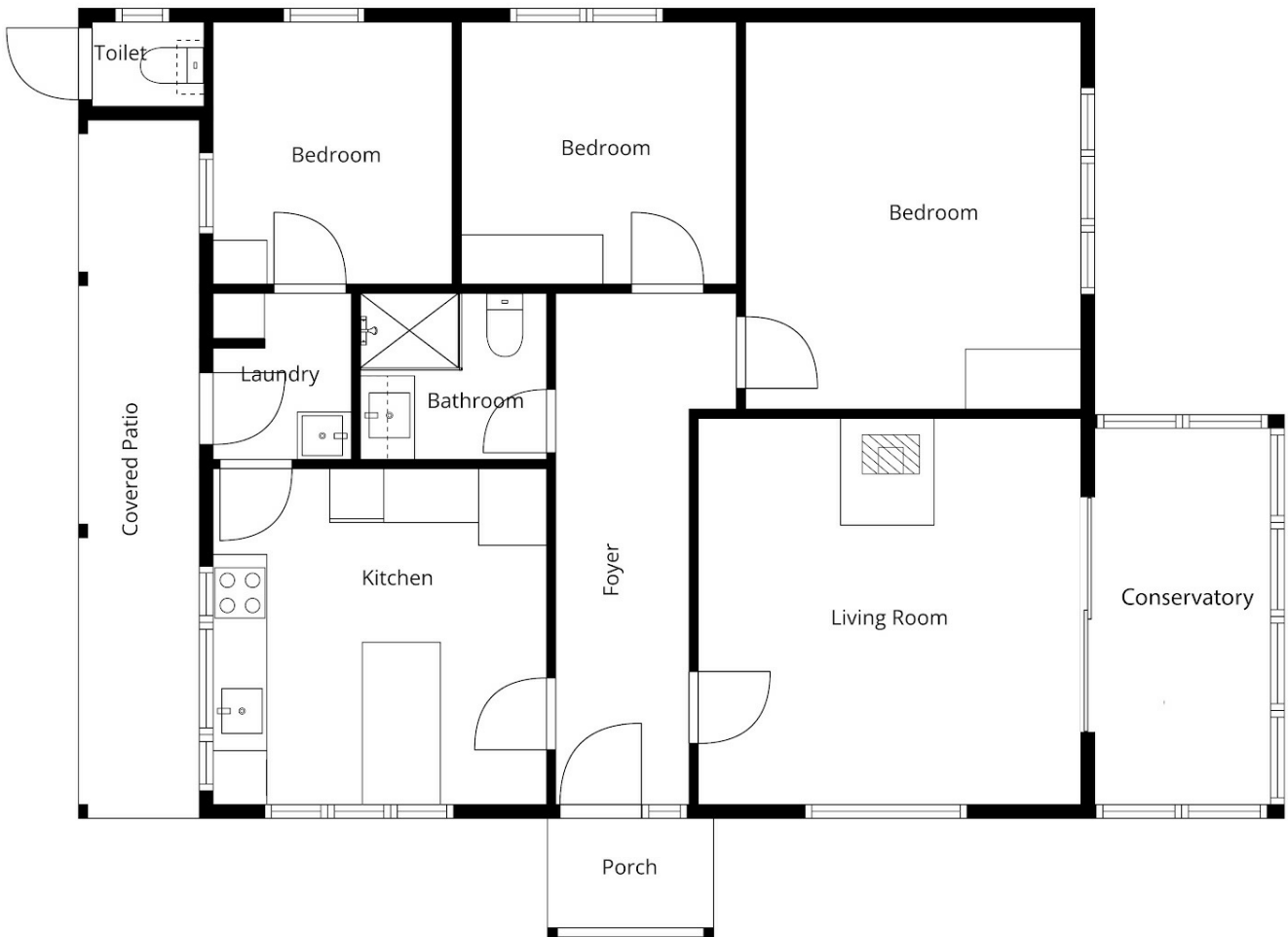
3 BED | 1 BATH | 1 CAR

PRICE:
\$467,000

OPEN FOR INSPECTION:
N/A



Shane and Julie Robinson
021953676
teamrobinson@thecollectiverealty.co.nz
www.thecollectiverealty.co.nz



Sizes And Dimensions Are Approximate, Actual May Vary

Disclaimer: Please note this floor plan is for marketing purposes and is to be used as a guide only. All dimensions are estimates only and may not be exact measurements.