



FOR SALE

MOVE IN READY MODERN BRICK HOME - NO POWER BILLS. SHED & COLOURBOND FENCING!

If you're chasing a tidy brick home where the hard work is already done, this 2016 built brick home stands out straight away.

The solar setup is a major feature, with a large 10KW system already in place along with a solar battery, keeping power costs right down. The owner reports that she never has a bill, and receives a credit each month.

Outside, the yard has been fully landscaped in recent times and designed for privacy, with new Colourbond fencing enclosing the block and creating a secure, quiet space to enjoy. There's also room in the front yard for a carport for those with extra vehicles or a caravan.

Inside, the home is solid, practical and easy to live in. The main living area is open and tiled, combining kitchen, dining and lounge into one functional space with air conditioning and direct sliding door access to the covered outdoor area and backyard.

The kitchen offers plenty of storage, electric cooking, and a layout that works well day to day, with tank water connected to the sink.

There are four bedrooms in total. The main bedroom includes air conditioning, good storage and direct access to the bathroom, while the remaining rooms are well sized and suitable for family, guests or office use.

The bathroom includes both a shower and bath, with a separate toilet nearby. A separate laundry with external access adds to the practicality.

There's a water tank in place, a covered outdoor area for everyday use, and a double shed positioned at the front of the property with power, ideal for storage, a workshop or parking. The block itself has plenty of space without being hard to maintain.

Location is another strong point. You're within easy walking distance to Wondai's shops, school,

4 BED | 1 BATH | 2 CAR

PRICE:

O/O \$625,000 Contact Julian

OPEN FOR INSPECTION:

N/A

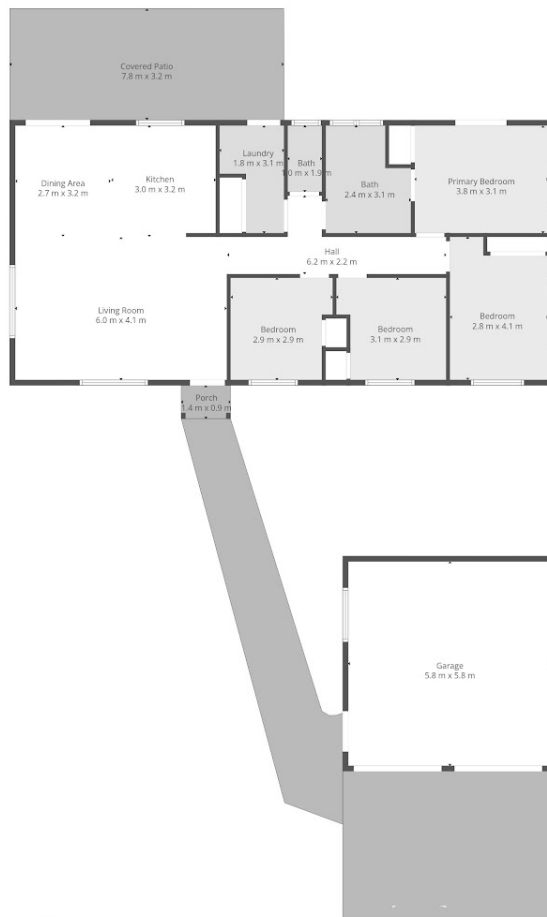


Julian Gregson

0421577537

julian.gregson@atrealty.com.au

www.juliangregson.com.au



Floor plan is provided as indicative layout only. Measurements are not available, floor plan is not to scale. No guarantees provided on accuracy. Exterior elements are not in position

Disclaimer: Please note this floor plan is for marketing purposes and is to be used as a guide only. All dimensions are estimates only and may not be exact measurements.

Julian Gregson
0421577537
 julian.gregson@atrealty.com.au
www.juliangregson.com.au

