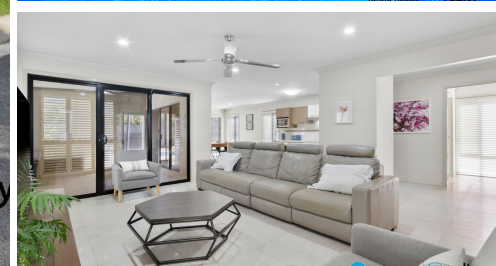
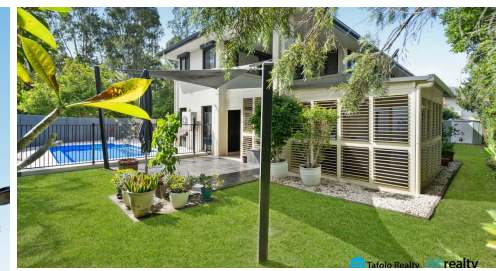


36 AZURE AVENUE, REDLAND BAY, QLD, 4165



FOR SALE

SUPERB HOME WITH POOL OPPOSITE RESERVE!

Ladies and gentlemen, we are excited to present to you this spacious and well-appointed family home!

Positioned on a 633m² corner block in a quiet and sought-after pocket of Redland Bay, this well-presented family home offers space, comfort, and the essence of the Redlands' coastal lifestyle.

The 2-storey home features living areas on both levels and includes lounge, dining, family, rumpus and fully protected outdoor entertainment spaces.

There are 3 bedrooms, including a spacious main bedroom with walk-in robe and ensuite, and there is also a large living area that could be used as a 4th bedroom if required.

The layout is family-friendly and flows seamlessly from inside to out, and there is scope for the whole family to enjoy their own space.

Outside, you'll enjoy a large outdoor area, a sparkling in-ground swimming pool and established gardens, grounds and grass areas.

There is both split-system and ducted air-conditioning, ceiling fans, solar power, solar hot water and a double garage for the vehicles.

The location is whisper quiet and opposite a tranquil reserve, and just minutes to the Red Edge Shopping Village, walking trails, parks, sporting fields and boat ramps.

Also within easy reach of Redland Bay Shopping Village, ferry terminal, Redlands Satellite Health Centre, Redland Bay Golf Club and hotel. Brisbane CBD and the Gold Coast are both easily accessible.

This superb property represents a great opportunity to secure a quality family home in a prime location.

So don't miss out! Call now, buy today and enjoy your future. Contact Ben for price and

3 BED | 2 BATH | 2 CAR

PRICE:

Please Contact For Price

OPEN FOR INSPECTION:

N/A



Ben Tafolo
0419260719

tafola@atrealty.com.au

tafalorealty.com.au



36 Azure Avenue REDLAND BAY

3 | 2 | 2 | 263m² | 633m²

All dimensions are approximate; they are subject to errors and inaccuracies and no liability will be accepted. Plans are shown for marketing purposes only.

Disclaimer: Please note this floor plan is for marketing purposes and is to be used as a guide only. All dimensions are estimates only and may not be exact measurements.