

15 SHAYLOR COURT GREENSBOROUGH



FOR SALE

CHARMING 3 BEDROOM HOME IN A LOVELY PART OF GREENSBOROUGH

3  | 1  | 1 

This 60s built and designed family home is the perfect opportunity for you and your family.

This original 3 Bedroom beauty has been much loved by its family for over 60 years is ready and waiting for new owners. Featuring 3 generous bedrooms plus a good size living room set on 556m2 land, this home has lots of potential, plus plenty of room under the house for storage with ample scope to add or extend.

The design will suit a growing family and is a wonderful opportunity to gain a foothold into a highly sort after pocket of Greensborough. Upon entry the main living room welcomes you to a light filled room. The separate kitchen and meals offer sun-soaked dining with a gas cooker and an abundance of cabinetry. Three large bedrooms, 2 with built in robes share the lovely original central bathroom. The living room offers an abundance of light and a great space to entertain family and friends or just relax with access to the dining area and kitchen, views overlooking the back yard and garden.

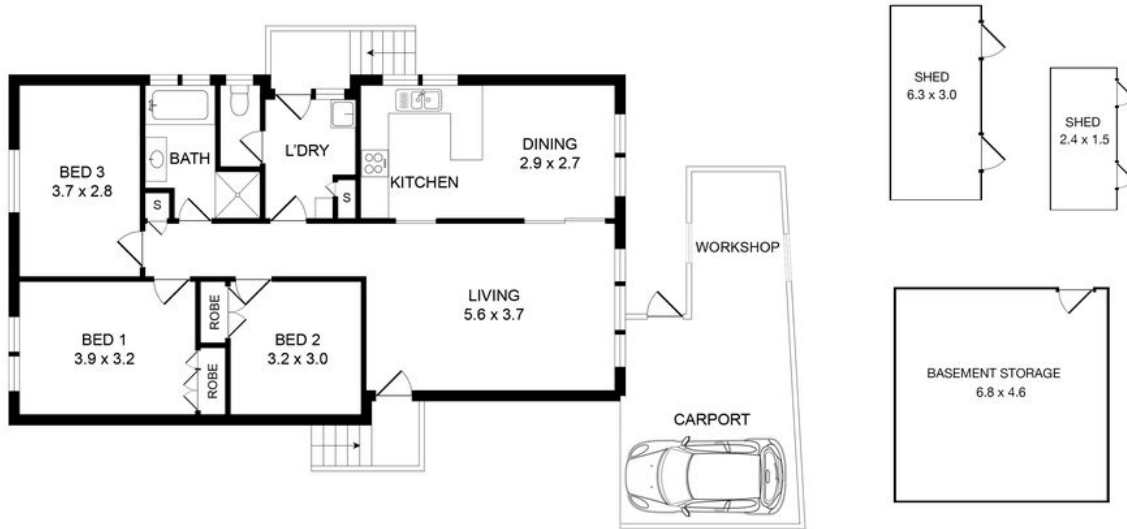
Outside the driveway leads down to the carport and sheds as well as the garden.

PRICE: \$880,000 - \$920,000

OPEN FOR INSPECTION: Apr 25 at 12:30pm - 1:00pm

Wayne Hutchinson | 0424370940 | wayne@waynehutchinson.com.au | waynehutchinson.com.au

15 SHAYLOR COURT,
GREENSBOROUGH



 Disclaimer: Floor plan is represented as guide only.

Disclaimer: Whilst every effort has been made to ensure the accuracy of these particulars, no warranty is given by the vendor or the agent as to their accuracy. Interested parties should not rely on these particulars as representations of fact but must instead satisfy themselves by inspection or otherwise.
(Rev AU#1)

Wayne Hutchinson | 0424370940 | wayne@waynehutchinson.com.au | waynehutchinson.com.au