

FOR SALE

DUAL LIVING 853MPOOL PARADISE: 3BR WITH VIEWS + -\$1.1M

853 SQM | 3 Bed | 3 Bath | 4 Car | Dual Living | \$1.1 Million

Dual living designed to suit two families, featuring a main residence and a self-contained unit/workshop, beautifully separated by an impressive, strategically positioned pool and timber deck.

Positioned in an elevated, sought-after cul-de-sac overlooking the golf course, with Queensland's highest peak, Mount Bartle Frere, in view, this architecturally designed residence delivers a rare combination of location, versatility and refined tropical living—all just a couple of minutes' drive to the Innisfail CBD.

Built by a respected North Queensland builder as their own home, this property showcases quality craftsmanship, thoughtful design and a focus on comfort, space and lifestyle.

A Home Designed for Living and Entertaining

A secure gated entrance welcomes you into a light-filled, open-plan living space where indoor and outdoor areas flow seamlessly together.

Spacious living, dining and kitchen zone with elevated outlooks
Well-appointed kitchen featuring island bench, breakfast bar and ample storage
Excellent natural light and cross ventilation throughout
Fully tiled interiors, air conditioning, ceiling fans and security screening

The home opens effortlessly to three covered entertaining balconies, offering multiple spaces to relax, entertain or simply enjoy the surrounding views.

Dual Living at Its Best

Designed with flexibility in mind, the property is ideal for extended families, dual occupancy or additional income potential.

3 BED | 3 BATH | 4 CAR

PRICE:

Dual Living 853m² 3 Bed 3 Bath 4 Car- \$1.1m

OPEN FOR INSPECTION:

N/A

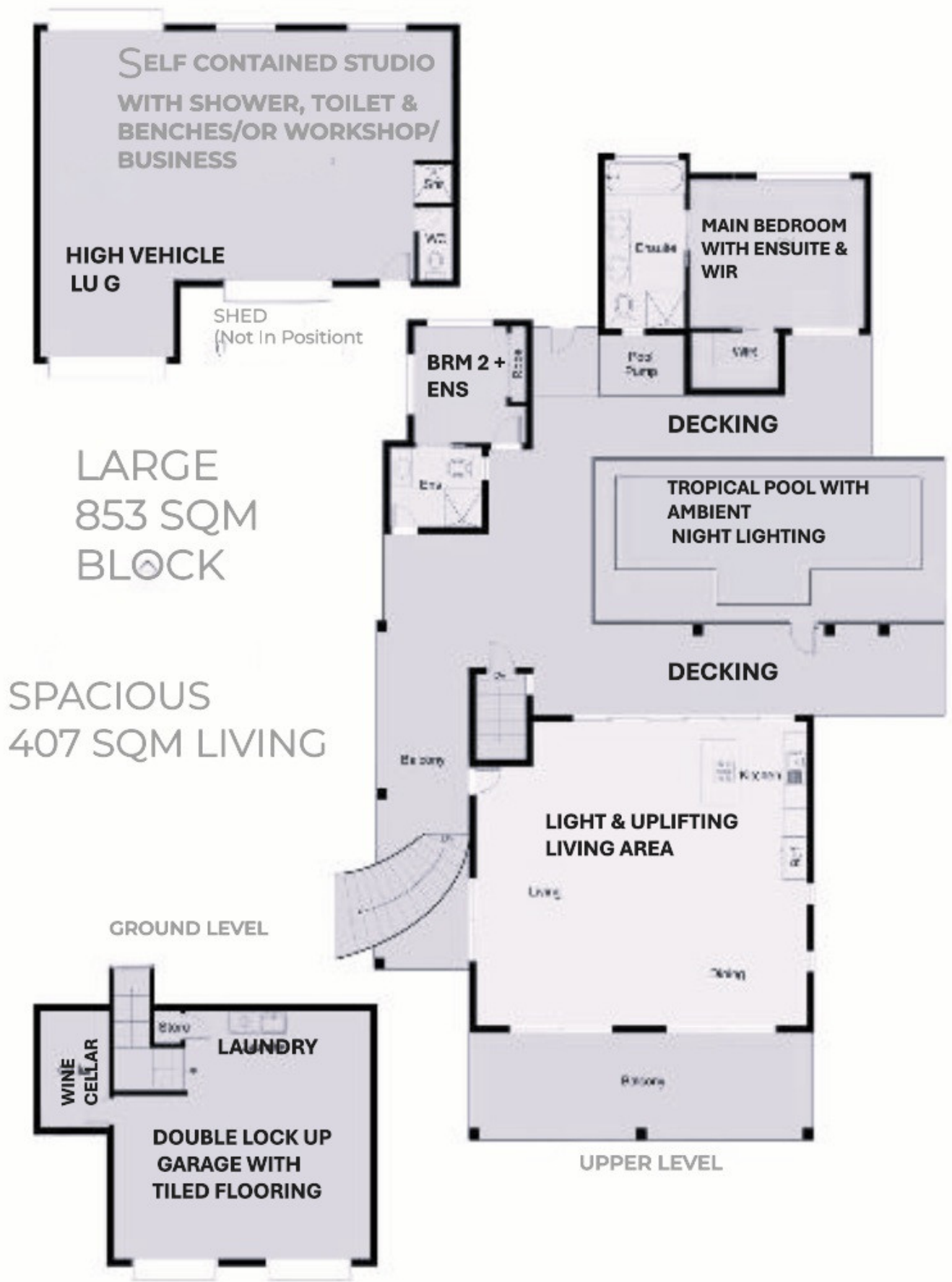


Jean Laterre

0437696969

jean.ccr@atrealty.com.au

www.atrealty.com.au



Disclaimer: Please note this floor plan is for marketing purposes and is to be used as a guide only. All dimensions are estimates only and may not be exact measurements.